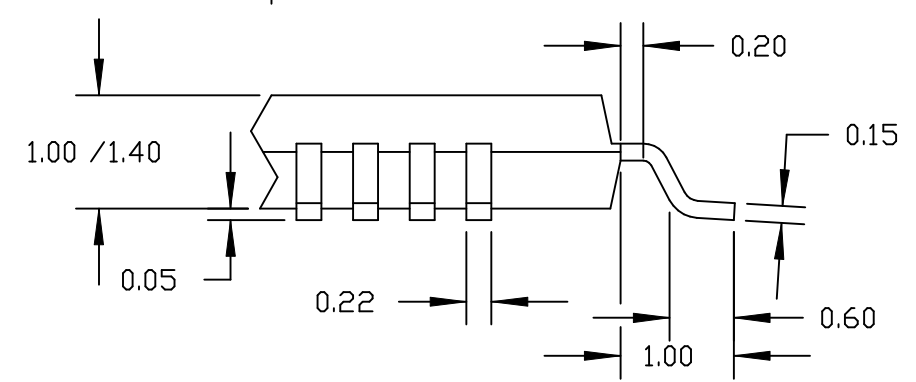
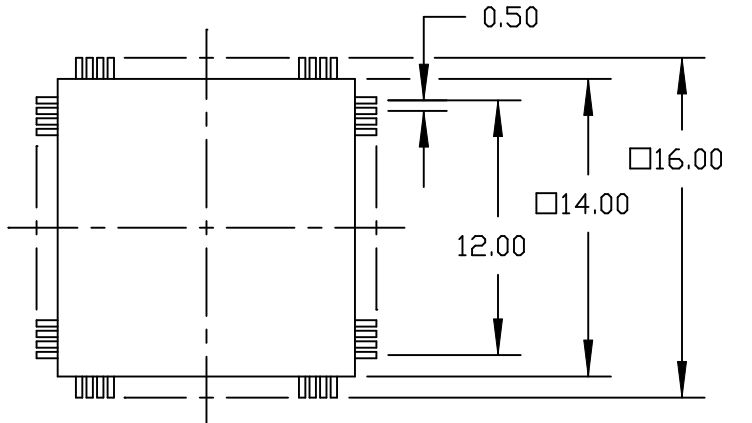
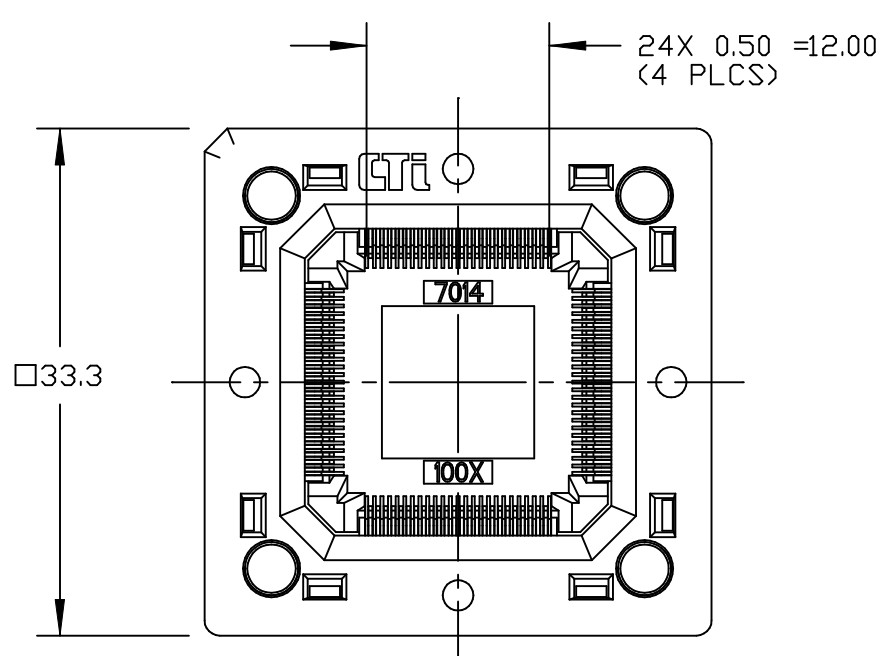
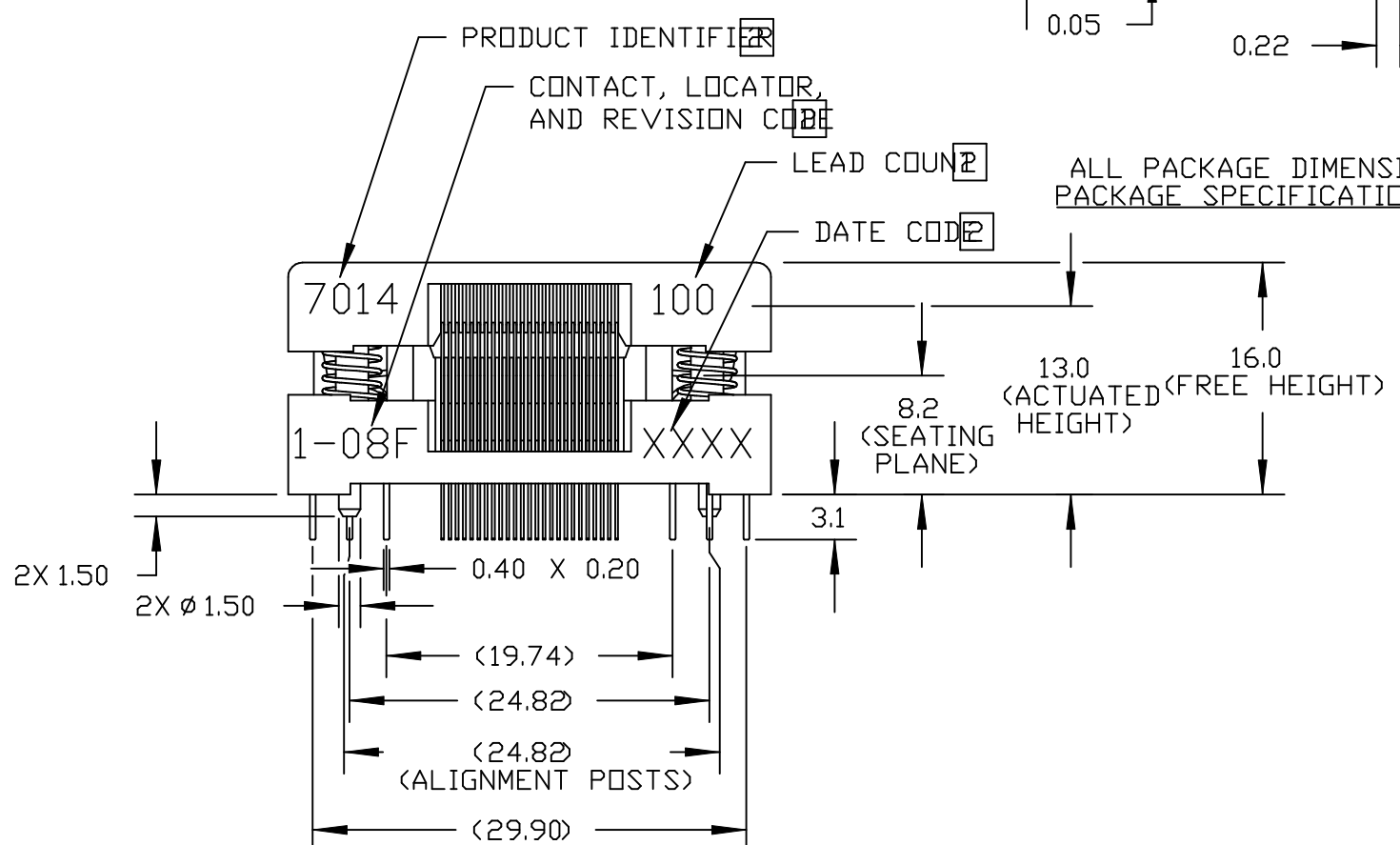
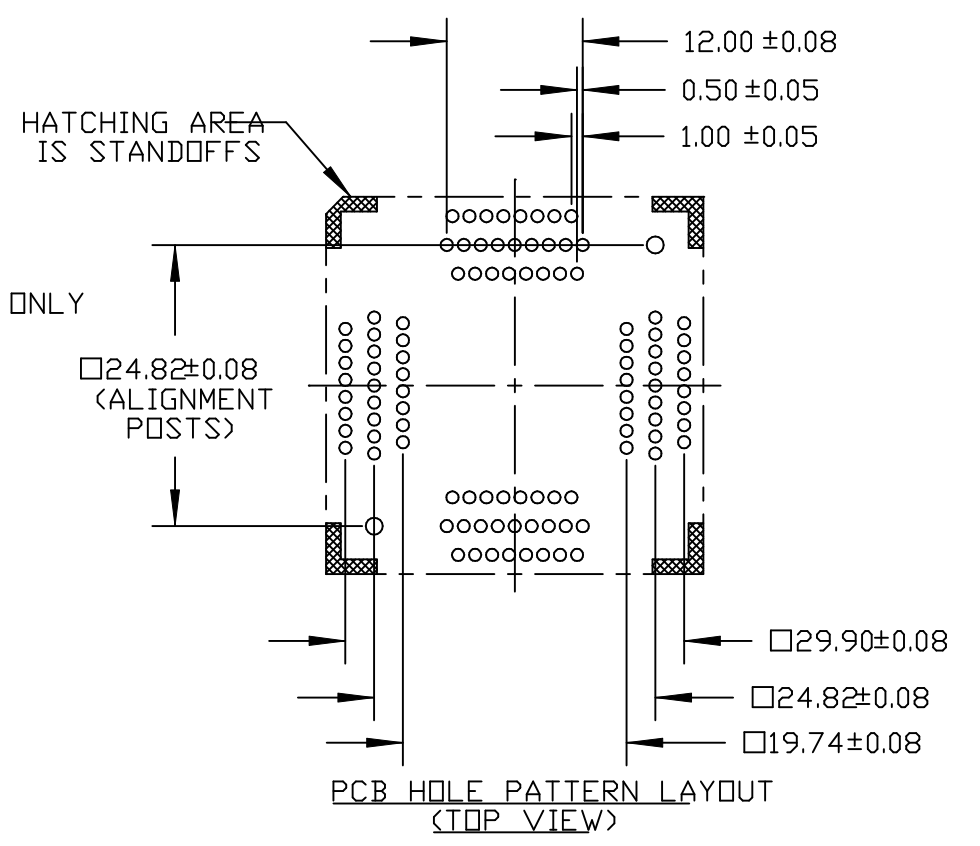


A	C	P	REV	DATE	BY	ECN #	REV	DATE	BY	ECN #	REV	DATE	BY	ECN #
X	-	-	D	3/11/96	RG	2409	E	5/12/98	SC	3128	F		SC	3189



ALL PACKAGE DIMENSIONS ARE FOR REFERENCE ONLY
PACKAGE SPECIFICATION IS JEDEC MO-026 B/C/D



- NOTES:
- MATERIAL AND FINISH:
SOCKET LID - POLYETHERIMIDE
SOCKET BASE - POLYPHENYLENE SULFIDE
CONTACTS - BeCu, SELECTIVE Au-SnPb OVER Ni PLATING
SPRINGS - STAINLESS STEEL, PASSIVATED
 - MARKING: 2.0 HIGH, COLOR - WHITE
 - REFER TO SK-0283 FOR CONTACT SEATING HEIGHTS.
 - REFER TO SK-0319 FOR NAIL/RIVET SEATING HEIGHTS.

LEGEND		THIS DOCUMENT CONTAINS PROPRIETARY INFORMATION THAT IS THE SOLE PROPERTY OF WELLS-CTI. THIS INFORMATION IS TO BE HELD BY ITS RECIPIENT ON A CONFIDENTIAL BASIS, AND IS NOT TO BE DISCLOSED TO OTHERS OR USED WITHOUT WRITTEN CONSENT OF WELLS-CTI.	MATERIAL/FINISH	DRAWN	 A subsidiary of PCD Inc. Phoenix Arizona USA	
©	CRITICAL			CHECKED		
0	NUMBER USE		REFERENCE	ENGINEER		
			PROJECT/SERIES	ENG. SUPRV.		
SIZE	PROJECTION		MFG. ENG.		PART NUMBER	REV
B		DO NOT SCALE	MOLDING		7014-100-1-08	F
			TOOLING		SCALE 2.0 :1	UNITS: mm [in]
					CAD NUMBER	SHEET 1