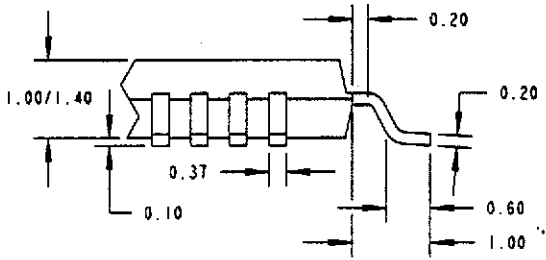
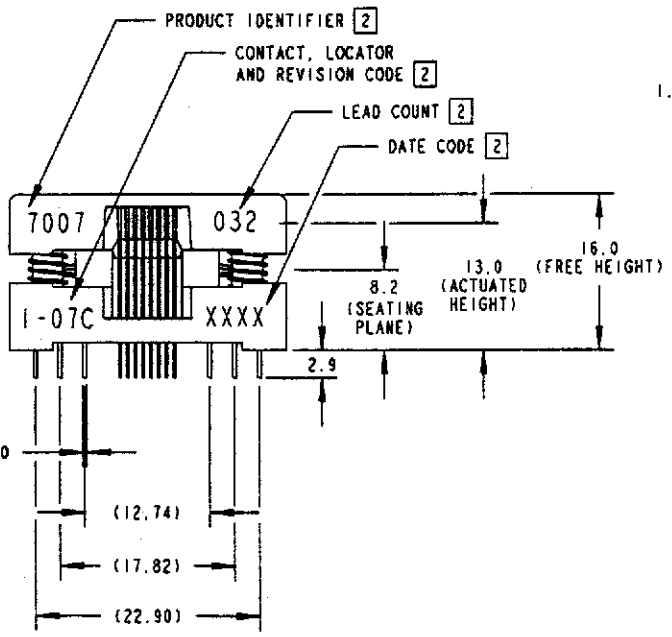
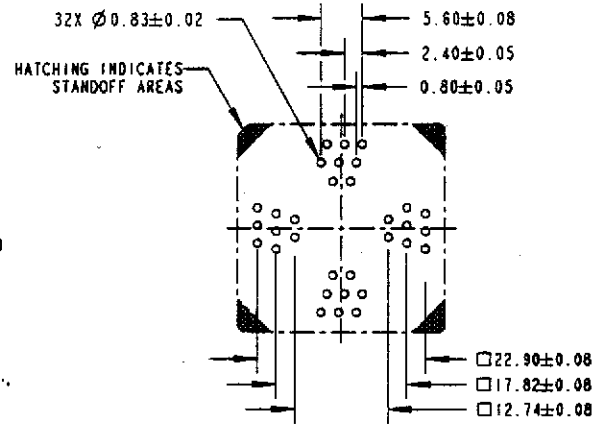
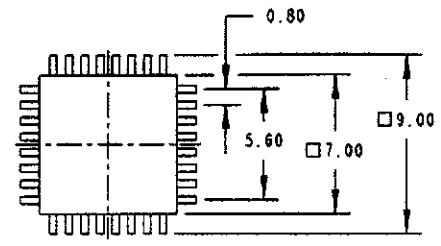
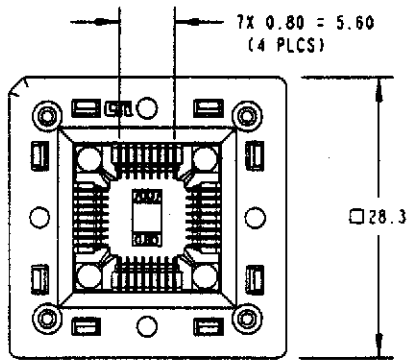


A	C	P	REV	DATE	BY	ECN #	REV	DATE	BY	ECN #	REV	DATE	BY	ECN #
X	-	-	C	6/12/98	SC	3188	CI	11/16/99	SC	3617	C2	4-5-00	SC	3755



ALL PACKAGE DIMENSIONS ARE FOR REFERENCE ONLY  
PACKAGE SPECIFICATION IS JEDEC MS-026.

RECOMMENDED  
PCB HOLE PATTERN LAYOUT  
(TOP VIEW)

- NOTES:
- MATERIAL AND FINISH:  
SOCKET LID - POLYETHERIMIDE.  
SOCKET BASE - POLYETHERIMIDE.  
CONTACTS - BeCu, SELECTIVE Au-SnPb/Ni PLATING.  
SPRINGS - STAINLESS STEEL, PASSIVATED.  
RIVETS - ALUMINUM #5056
  - MARKING: 2.0 HIGH, COLOR: WHITE.
  - REFER TO SK-0283 FOR CONTACT SEATING HEIGHTS.
  - REFER TO SK-0319 FOR NAIL/RIVET PRESS HEIGHTS.

LEGEND		MATERIAL/FINISH		DRAWN		 WELLS-CTI A subsidiary of PCB Inc. Phoenix, Arizona, USA	
Ⓢ	CRITICAL	THIS DOCUMENT CONTAINS PROPRIETARY INFORMATION THAT IS THE SOLE PROPERTY OF WELLS-CTI. THIS INFORMATION IS TO BE HELD BY ITS RECIPIENT ON A CONFIDENTIAL BASIS, AND IS NOT TO BE DISCLOSED TO OTHERS OR USED WITHOUT WRITTEN CONSENT OF WELLS-CTI.	FINISH	DATE	BY	DATE	<b>TOPP SOCKET ASSEMBLY</b> (7mm, 321d)
Ⓞ	NUMBER OF Ⓢ USED	REFERENCE	LINKAGE	DATE	BY	DATE	
SIZE	PROJECTION	PROJECT/SERIES	ENG. DESIGNED	DATE	BY	DATE	PART NUMBER <b>7007-032-1-07</b>
B			REV. ENG.				SCALE 2.0:1
			MILS/IN				UNITS: mm (in)
			TOOLING				SHEET 1