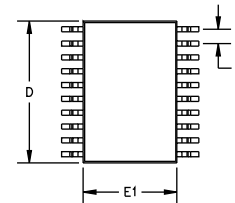
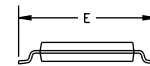
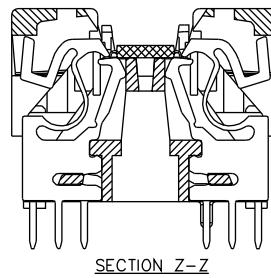
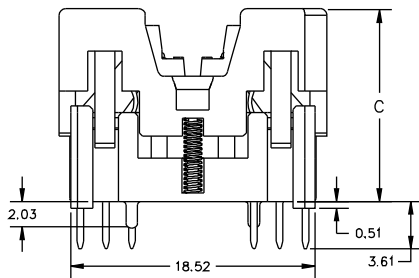
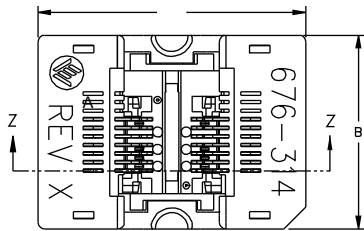


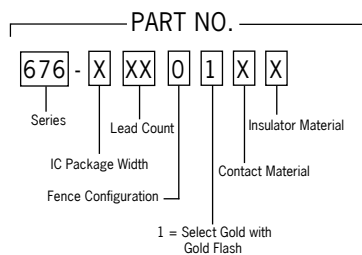
# 676 SERIES TSSOP DUAL PINCH ZIF SOCKET

- > Open top, Zero Insertion Force design for automatic loading
- > Dual pinch, highly reliable contacts
- > Live bug insertion



Lead Count	Pitch e (mm)	Package Dimensions (mm)			Part Number	Socket Dimensions (mm)		
		Width (E1)	Tip to Tip (E)	Length (D)		Length (A)	Width (B)	Height (C)
14	0.65	4.39	6.40	5.15	676-3140111	20.32	14.70	14.63
16	0.65	4.39	6.40	5.00	676-3160111	20.32	14.70	14.63
20	0.65	4.39	6.40	6.65	676-3200111	20.32	14.70	14.63

## DESCRIPTION & ORDERING INFORMATION



## MATERIALS & SPECIFICATIONS

- > Socket Body: PEI or Equivalent
- > Contact: Beryllium Copper Alloy
- > Contact Plating: Gold over Nickel
- > Contact Normal Force: 30 grams
- > Contact Resistance: 30 mΩ
- > Dielectric: 600V AC for 2 minutes
- > Temperature Rating: 150°C
- > Insulation Resistance: 12,000 MΩ @ 100V DC
- > Durability: 10,000 cycles min.