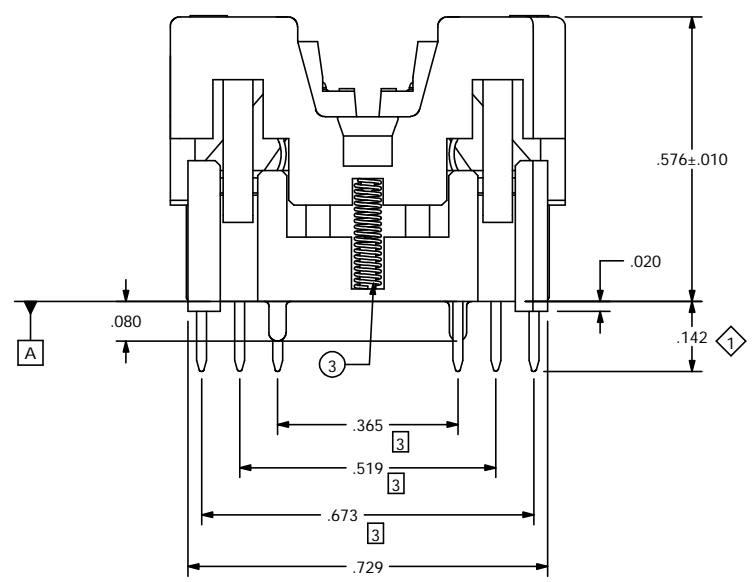
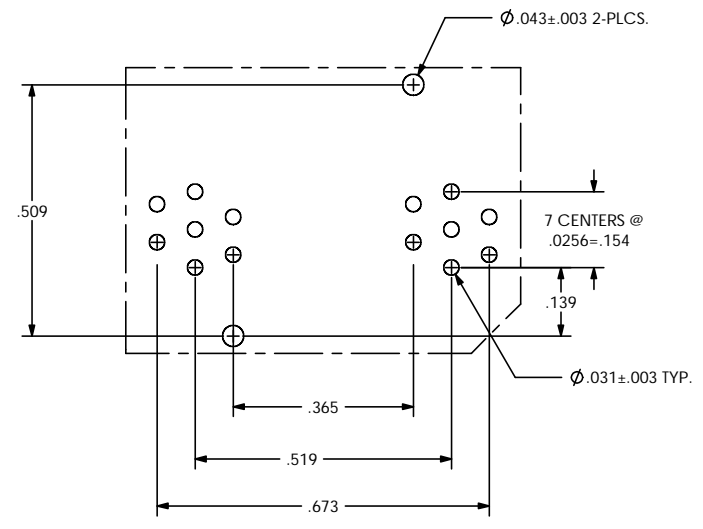
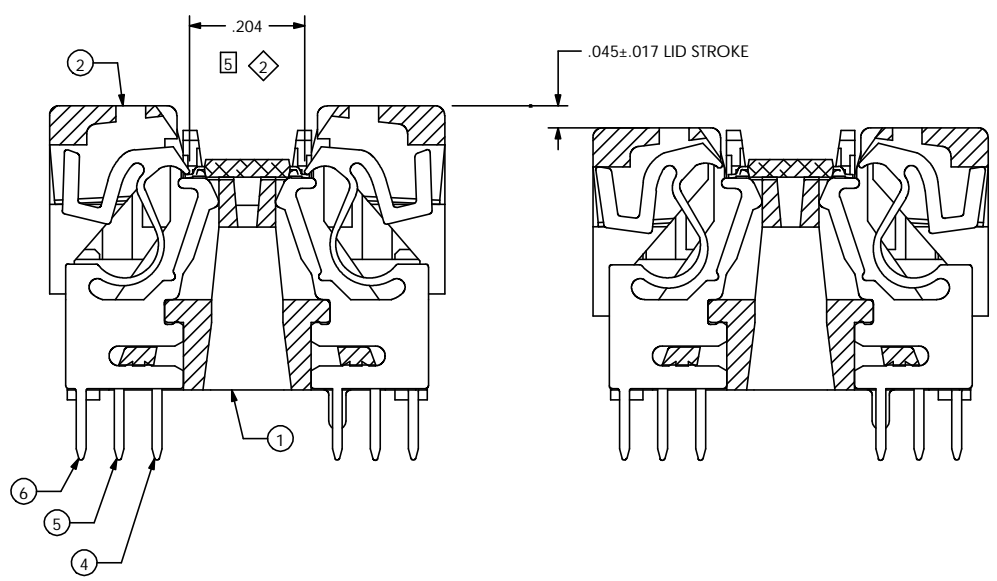
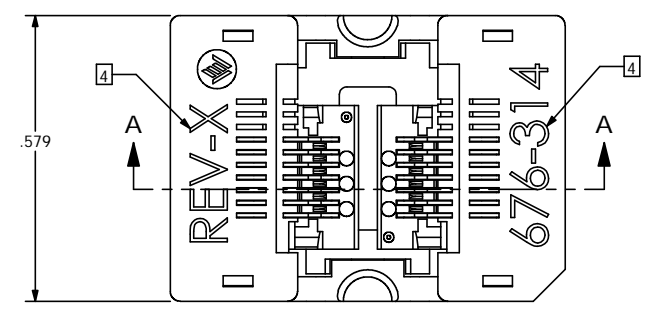
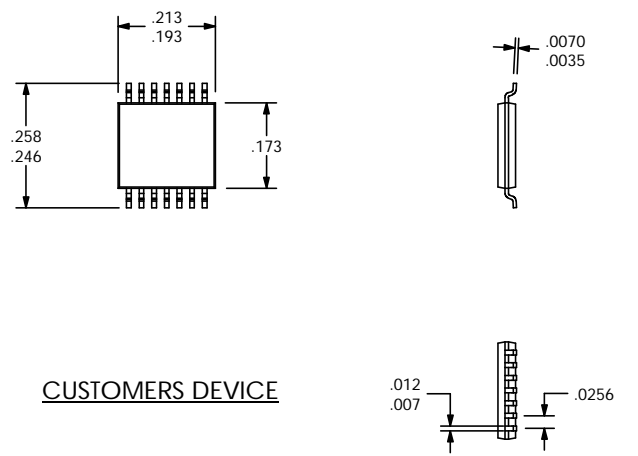
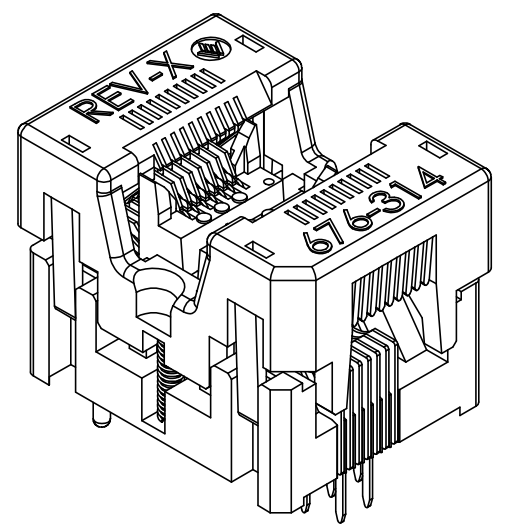
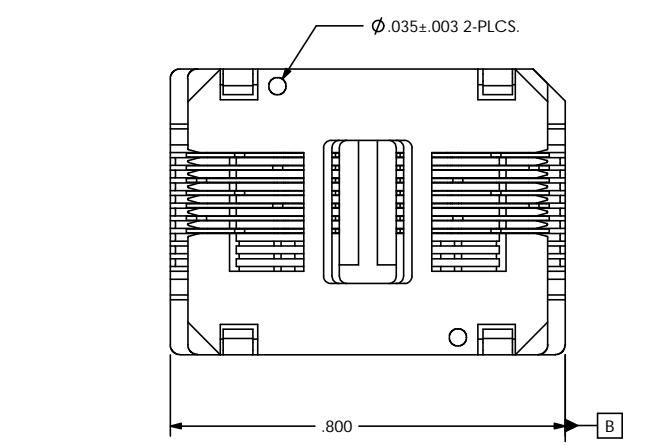


A	C	P	REV	DATE	BY	ECN#	REV	DATE	BY	ECN#	REV	DATE	BY	ECN#
X	X	-	B	12-5-98	DW	97-0808	B1	4-10-01	KM	01-0120	B2	5-15-01	MM	01-0159



FOOTPRINT
FOOTPRINT AS VIEWED LOOKING DOWN FROM TOP OF SOCKET.
RECOMMENDED HOLE PATTERN



CUSTOMERS DEVICE

SERIES #	-	PKG. WIDTH	CONTACT QTY.
676	-	3	14

ITEM	PART NUMBER	QTY.	DESCRIPTION
1	9473001	1	BASE
2	9606001	1	LID
3	2076001	2	SPRING
4	1108X13	4	CONTACT
5	1108X12	6	CONTACT
6	1108X11	4	CONTACT

- 5 NOSE TO NOSE DIMENSION WITH OUT DEVICE
- 4 MARK IN .079 (2.0mm) HIGH LETTERS IN APPROXIMATE LOCATION AS SHOWN. INSERT THE REVISION LETTER OF THIS DRAWING IN PLACE OF THE LETTER 'X'. THE TABLE SHOWS THE SIGNIFICANCE OF THE PART NUMBER PRINTING.
- 3 .003 B
- 2 SOPCKET MUST MEET REQUIREMENTS OF WELLS-CTI ENG. SPEC #ES-P-676.
- 1 AFTER ASSEMBLY CONTACT TAILS MUST MEET POSITIONAL TOL. PER PIN GAGE #T-0689.

LEGEND		MATERIAL / FINISH	DRAWN	DATE	 SOUTH BEND INDIANA USA A subsidiary of PCD inc.
◇	CRITICAL		KEN M.	8-1-96	
3	TOTAL NO. OF ◇ USED	REFERENCE	K.W.	8-2-96	PART NAME 14 LD .0256 PITCH, .250 WIDE PKG. TSOP / SSOP SOCKET PART NUMBER 676-3140111 REV. B2
		PROJECT / SERIES	P.C.	8-2-96	
SIZE	PROJECTION	TOLERANCES	B.M.	8-2-96	SCALE 5:1 UNITS: in
D		.XX ±.01 .XXX ±.005 .XXXX ±.001 ANGLE ±1°	MFG. ENGR.	8-2-96	CAD NUMBER 676-3140111.SLDDRW SHEET 1 OF 1
		DO NOT SCALE	S.W.	8-2-96	