

S-Beams



60001, Alloy Steel Page 293

Single- or multiple-cell tension load applications. Nickel plated, high-alloy steel construction. Integral 20' (6.1m) cable and full environmental protection with stainless steel side plates. Capacities from 25 to 20,000 lb (113.4 to 9071.9 kg). Capacities of 5000 lb (2268.0 kg) or more have standardized output for multiple-cell installations.



60050, Stainless Steel Page 294

Single- or multiple-cell applications. Integral 20' (6.1m) cable and full environmental protection with stainless steel side plates. Stainless steel construction for added corrosion protection. Capacities from 250 to 20,000 lb (113.4 to 9071.9 kg). Capacities of 5000 lb (2268.0 kg) or more have standardized output for multiple-cell installations.



60063, Stainless Steel Page 295

Welded seal stainless steel S-beam load cell designed for compression and tension. Ideal for scale conversions and general-purpose weighing. NTEP approved in capacities from 500 to 5,000 lb (226.8 to 2268.0 kg). Non-NTEP in capacities of 10,000 to 20,000 lb (4535.9 to 9071.9 kg).



60036, Alloy Steel Page 296

Single- or multiple-cell tension load applications. Integral 20' (6.1m) cable. Environmentally protected with neoprene sleeve. Nickel-plated, high-alloy steel construction. Capacities from 25 to 150 lb (11.3 to 68.0 kg).



Single-Ended Beams



65023-5297, Alloy Steel Page 297

The Sensortronics 65023 has been a staple in the Rice Lake Weighing Systems Load Cell Guide for years. This model is manufactured from high-alloy steel and is nickel-plated to provide protection from the elements. The latest version is the 65023-XX-5297, which is custom featured with matched outputs and 8.5' of load cell cable. This model was originally designed for Fairbanks scales under part number 65023-XX-5164 (included a Fairbanks label) and can now be purchased from Rice Lake Weighing Systems for replacement applications. Available in capacities of 1,000 lb and 2,500 lb.



NEW!



65023-5141, Alloy Steel Page 298

The 65023-5141 is another standard Sensortronics product modified for a specific OEM manufacturer and now available through Rice Lake Weighing Systems to streamline your replacement part buying needs. This model was previously specific to Pennsylvania Scale and features a standard 9' load cell cable. Available in 1,000 lb and 2,500 lb capacities.



NEW!

Single-Ended Beams (Continued)

65023, Alloy Steel Page 299



Designed for low-profile floor scales. Environmentally protected with stainless steel side plates. Nickel-plated high-alloy steel with thru holes for mounting and a thru or threaded hole for loading. Capacities from 500 to 20,000 lb (226.8 to 9071.9 kg).



65023 SS, Stainless Steel, Threaded/Thru Page 300



Designed for low-profile floor scales. Environmentally protected with stainless steel side plates. Stainless steel and a threaded or thru hole for loading. Capacities from 250 to 20,000 lb (226.8 to 9071.9 kg).



65023 S, Stainless Steel Page 301



Designed for low-profile floor scales. Environmentally protected with stainless steel side plates. Stainless steel and a threaded hole for loading. Capacities from 1000 to 10,000 lb (453.6 to 4535.9 kg).



65083, Stainless Steel Page 302



This welded seal precision load cell offers exceptional performance and reliability in hostile environment applications typical of food and chemical processing. Designed for single- or multiple-cell installations, the 65083 has a threaded load hole for easy adaptation of mounting hardware or leveling feet typical of floor scales. Capacities from 1000 to 10,000 lb (453.6 to 4535.9 kg). Integral 20' (6.1m) cable.



65083 S, Stainless Steel Page 303



This welded seal precision load cell offers exceptional performance and reliability in hostile environment applications typical of food and chemical processing. Designed for single- or multiple-cell installations, the 65083S is provided with a threaded load hole for easy adaptation of mounting hardware or leveling feet typical of floor scales. Capacities from 1000 to 10,000 lb (453.6 to 4535.9 kg). Integral 20' (6.1m) cable.



65007, Alloy Steel Page 304



Ultra-small load cell. Nickel plated and environmentally protected with a stainless steel side plate. Designed for low-profile applications. Capacities from 25 to 250 lb (11.3 to 113.4 kg). Integral 20' (6.1m) cable.



Single-Ended Beams (Continued)



60040, Alloy Steel Page 305

Designed for low-profile, single- or multiple-cell weighing applications. Integral 20' (6.1m) cable. Nickel plated, high-alloy steel construction, environmentally protected with a neoprene sleeve. Capacities from 25 to 500 lb (11.3 to 226.8 kg).



60030, Alloy Steel Page 306

Designed for high-impact loading. Integral 20' (6.1m) cable. High-alloy steel construction. Environmentally protected with a neoprene sleeve. Capacities from 50 to 300 lb (22.7 to 136.1 kg).



60018, Alloy Steel Page 307

Designed for low-profile, single-cell weighing applications. Integral 20' (6.1m) cable. Environmentally protected with neoprene sleeve. Nickel plated high-alloy steel. Capacities from 500 to 2500 lb (226.8 to 1134.0 kg).



Compression Canister



65114, Stainless Steel Page 308

The 65114 was specially designed to provide the superior protection of stainless steel and hermetic sealing for truck scale applications. This model is built to provide a high degree of accuracy, while protecting against the severe conditions that truck scale load cells often endure. The easy installation of "rocker column" type load cells also provides a distinct advantage over traditional market alternatives. Available in three different heights, this product can easily be adapted to existing applications.



Single Points



60008, Alloy Steel Page 309

Low-capacity load cell designed for single-cell platforms in protected environments. Built-in overload stops protect against overload (up to 5 times rated capacity). Integral 10' (3.1m) cable. 1 to 10 lb (.5 to 4.5 kg) cells may be used with a base size of 6" x 6" (152.4mm x 152.4mm); 20 to 100 lb (9.1 to 45.4 kg) cells, with a base size of 12" x 12" (304.8mm x 304.8mm).



60048, Alloy Steel Page 310

Load cells especially designed for heavy-duty, off-center loads on a 20" x 20" (508mm x 508mm) platform. Nickel plated, high-alloy steel construction. Includes integral 10' (3.1m) cable. 1000 lb (453.6 kg) capacity load cell may be used with 30" x 30" (762mm x 762mm) platform. Capacities from 25 to 1000 lb (11.3 to 453.6 kg).



Single Points (Continued)

60048 SS, Stainless Steel Page 311



Load cells especially designed for heavy-duty, off-center loads on a 20" x 20" (508mm x 508mm) platform. Stainless steel construction specially designed for washdown situations. Includes integral 10' (3.1m) cable. 1000 lb (453.6 kg) capacity load cell may be used with 30" x 30" (762mm x 762mm) platform. Capacities from 25 to 1000 lb (11.3 to 453.6 kg).



60051, Stainless Steel Page 312



Designed as a replacement for the NCI® Mark III in hostile environments. Stainless steel, moisture-resistant single-point cell. Integral 10' (3.1m) cable. 10 to 25 lb (4.5 to 11.3 kg) cells may be used with a base size of 8" x 8" (203.2mm x 203.2mm); 50 to 200 lb (22.7 to 90.7 kg) cells, with a base size of 12" x 12" (304.8mm x 304.8mm).



65024, Alloy Steel Page 313



Low-profile single-point load cell designed for single-cell platforms in protected environments. Nickel-plated alloy steel construction. Capacities from 2 to 25 lb (.9 to 11.3 kg). Integral 10' (3.1m) cable.



60060, Aluminum Page 314



High-capacity off-center load cell accurately weighs loads on a 36" x 36" platform. Aluminum clear anodized construction. Capacities from 100 to 2000 lb (45.4 to 907.2 kg). Integral 10' (3.1m) cable.



60060-0101, Stainless Steel Page 315



High-capacity off-center load cell accurately weighs loads on a 36" x 36" platform. Stainless steel construction. Capacities from 250 to 2000 lb (113.4 to 907.2 kg). Integral 10' (3.1m) cable.



60064, Stainless Steel Page 316



This low-profile single point is designed for bench scale and checkweigher applications that require stainless steel, hermetically-sealed solutions. Ideal for harsh washdown environments. Capacities from 25 to 100 lb (11.3 to 45.3 kg). Complete with 10' (3.1m) of load cell cable.



Double-Ended Beams

65016, Alloy Steel Page 317



Nickel plated and environmentally protected with stainless steel side plates. Designed for center loading compatibility with the RL1600 tank weighing assemblies. Capacities from 1000 to 75,000 lb (453.6 to 34,019.4 kg). Integral 25' (7.6m) cable.



65016W, Stainless Steel Page 318



Stainless steel and welded seal weighing applications. Designed for center loading compatibility with RL1600 tank weighing assemblies. Capacities from 1000 to 75,000 lb (453.6 to 34,019.4 kg). Integral 25' (7.6m) cable.



65016WH, Stainless Steel Page 319



Stainless steel full hermetic version of the popular 65016 series of load cells capacities from 1000 to 75,000 lbs. Integral 25' of cable.



65058, Alloy Steel Page 320



Nickel plated and environmentally protected with stainless steel side plates. Designed for center link loading and compatibility with the MVS or similar suspension systems up to 75,000 lb (34,019.4 kg). NTEP-certified capacities from 20,000 to 125,000 lb (9071.9 to 56,699.1 kg); non-NTEP capacities of 10,000 lb (4535.9 kg). Integral 35' (10.6m) cable.



65058 S, Stainless Steel Page 321



The Sensortronics 65058 S is a double-ended beam specifically designed for harsh environment vehicle weighing applications. This stainless steel, welded seal product is an ideal substitute for traditional alloy steel, nickel plated units where corrosive or washdown conditions exist. This model is compatible with both the MVS and TSA mounts, and is available in capacities ranging from 10,000 to 200,000 lb (2268.0 to 90,718.5 kg). Each unit is provided with a standard 35' (10.6m) cable.



Double-Ended Beams (Continued)

65061A, Alloy Steel Page 322



This unique loading button double-ended beam has been a standard model in Fairbanks truck scales for years. This NTEP approved, zinc plated, alloy steel load cell (welded-seal in 50,000 lb) is sealed with a potting compound that has been proven through the test of time in numerous applications. This unit is offered in capacities of 40,000 and 50,000 lb (18,143.7 to 22,679.6kg), and is affordably priced compared to other replacement cell options in the market-place. Each unit is provided standard with 60' (18.2m) of stainless steel braided cable.



65040A, Alloy Steel Page 323



Nickel plated and environmentally protected with stainless steel side plates. Designed for center mounting and double link loading. Capacities from 25,000 to 125,000 lb (11,339.8 to 56,699.1 kg). Integral 35' (10.6m) cable.

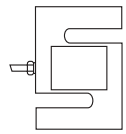


65040 S, Stainless Steel Page 324

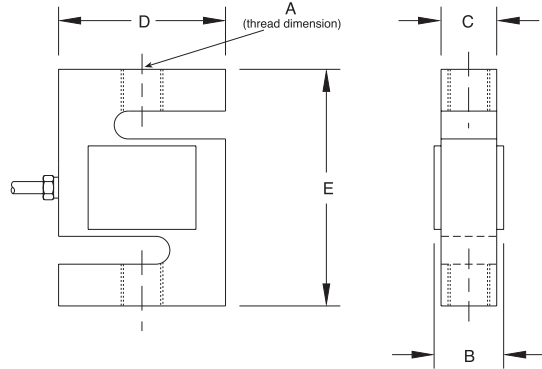


This model is an upgraded version of the Sensortronics 65040A, and is offered in stainless steel, with welded sealing. The center-supported double-ended beam design is compatible with Unilink/Translink mounts. The full stainless, welded seal upgrade makes this model ideal for applications where harsh chemicals and washdown conditions exist. This model is available in capacities ranging from 25,000 to 200,000 lb (11,339.8 to 90,718.5 kg), and is provided with a standard 35' (10.6m) cable.





60001 S-Beam, Alloy Steel NTEP 1:5000 Class III/1:10000 Class III L Single Cell, IP67



SPECIFICATIONS:

Full Scale Output:	3.0 mV/V
Bridge Resistance:	350 ohms, nominal
Material/Finish:	High-alloy steel, nickel plated
Temperature:	Compensated range 14°F to 104°F/-10°C to 40°C
Manufacturer	
Model Number:	60001A-XX-1177
Safe Overload:	150% Full scale
Rated Excitation:	10V DC (15V maximum)
Nonlinearity:	0.03% Full scale
Hysteresis:	0.02% Full scale
Insulation Resistance:	5000 megohms
Seal Type:	Environmentally-sealed
Cable Length:	20'±6.1m
Cable Color Code:	Red + Excitation Black - Excitation Green + Signal White - Signal
Warranty:	2 years

RATED CAPACITY	DIMENSIONS				
	A	B	C	D	E
lb/inches					
25-200	1/4-28 UNF	.65	.50	2.00	2.50
250-300	3/8-24 UNF-2B	.75	.50	2.00	3.00
500-2000	1/2-20 UNF-2B	1.00	.75	2.00	3.00
2500-3000	1/2-20 UNF-2B	1.25	1.00	2.00	3.00
5000	3/4-16 UNF-2B	1.25	1.00	3.00	4.25
10,000	3/4-16 UNF-2B	1.25	1.00	3.50	4.75
15,000	1-14 UNS-2B	1.50	1.25	4.00	5.50
20,000	1 1/4-12 UNF-2B	2.25	2.00	5.00	7.00
kg/millimeters					
11.3-45.4	1/4-28 UNF	16.5	12.7	50.8	63.5
113.4-136.1	3/8-24 UNF-2B	19.1	12.7	50.8	76.2
226.8-907.2	1/2-20 UNF-2B	25.4	19.1	50.8	76.2
1134.0-1360.8	1/2-20 UNF-2B	31.8	25.4	50.8	76.2
2268.0	3/4-16 UNF-2B	31.8	25.4	76.2	108.0
4535.9	3/4-16 UNF-2B	31.8	25.4	88.9	120.7
6803.9	1-14 UNS-2B	38.1	31.8	101.6	139.7
9071.9	1 1/4-12 UNF-2B	57.2	50.8	127.0	177.8

60001 ORDER INFORMATION

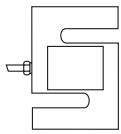
Load Rating	Part #	Suggested List Price
25 lb (11.3 kg)	61116	
50 lb (22.7 kg)	61117	
100 lb (45.4 kg)	61118	
200 lb (90.7 kg)	61119	
250 lb (113.4 kg)	61120	
300 lb (136.1 kg)	61121	
500 lb (226.8 kg)	61122	
750 lb (340.2 kg)	61123	
1000 lb (453.6 kg)	61124	
1500 lb (680.4 kg)	61125	
2000 lb (907.2 kg)	61126	
2500 lb (1134.0 kg)	61127	
3000 lb (1360.8 kg)	61128	
5000 lb (2268.0 kg)	61129	
10,000 lb (4535.9 kg)	61130	
15,000 lb (6803.9 kg)	61131	
20,000 lb (9071.9 kg)	61132	

INTERCHANGEABLE PRODUCTS

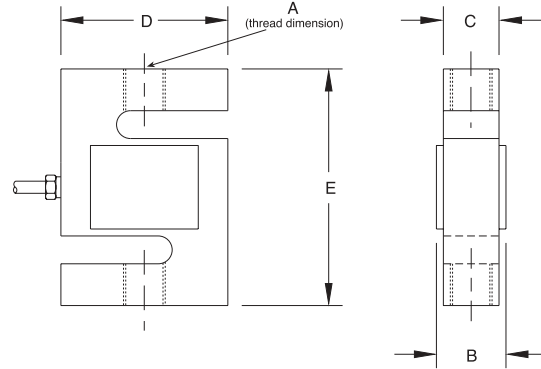
Manufacturer	Model
Rice Lake Weighing Systems	(see page 104) RL20001
Celtron	(see page 186) STC

WEIGH MODULE AVAILABLE

Model	Page #
ITCM Isolated Tension Cell Mount	360



60050 S-Beam, Stainless Steel, IP67



RATED CAPACITY

lb/inches
250
500-1500
2000-3000
5000
10,000
15,000
20,000

A
3/8-24 UNF-2B
1/2-20 UNF-2B
1/2-20 UNF-2B
3/4-16 UNF-2B
3/4-16 UNF-2B
1-14 UNS-2B
1 1/4-12 UNF-2B

B
.75
1.00
1.25
1.25
1.25
1.50
2.00

DIMENSIONS

C
.50
.75
1.00
1.00
1.00
1.25
1.94

D
2.00
2.00
2.00
3.00
3.50
4.00
5.00

E
3.00
3.00
3.00
4.25
4.75
5.50
7.00

kg/millimeters

113.4
226.8-680.4
907.2-1360.8
2268.0
4535.9
6803.9
9071.9

3/8-24 UNF-2B
1/2-20 UNF-2B
1/2-20 UNF-2B
3/4-16 UNF-2B
3/4-16 UNF-2B
1-14 UNS-2B
1 1/4-12 UNF-2B

19.1
25.4
31.8
31.8
31.8
38.1
50.8

12.7
19.1
25.4
25.4
25.4
31.8
49.3

50.8
50.8
50.8
76.2
88.9
101.6
127.0

76.2
76.2
76.2
108.0
120.7
139.7
177.8

SPECIFICATIONS:

Full Scale Output: 3.0 mV/V
Bridge Resistance: 350 ohms, nominal
Material/Finish: Stainless steel
Temperature: Compensated range
0°F to 150°F/-18°C to 65°C
Manufacturer
Model Number: 60050
Safe Overload: 150% Full scale
Rated Excitation: 10V DC (15V maximum)
Nonlinearity: 0.03% Full scale

Hysteresis: 0.02% Full scale
Insulation Resistance: 5000 megohms
Seal Type: Environmentally-sealed, IP67
Cable Length: 20'±6.1m
Cable Color Code: Red + Excitation
Black - Excitation
Green ... + Signal
White - Signal
Warranty: 2 years

60050 ORDER INFORMATION

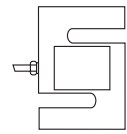
Load Rating	Part #	Suggested List Price
250 lb (113.4 kg)	17077	
500 lb (226.8 kg)	17078	
750 lb (340.2 kg)	17079	
1000 lb (453.6 kg)	17080	
1500 lb (680.4 kg)	17081	
2000 lb (907.2 kg)	17082	
2500 lb (1134.0 kg)	17083	
3000 lb (1360.8 kg)	17084	
5000 lb (2268.0 kg)	17085	
10,000 lb (4535.9 kg)	17086	
15,000 lb (6803.9 kg)	17087	
20,000 lb (9071.9 kg)	17088	

INTERCHANGEABLE PRODUCTS

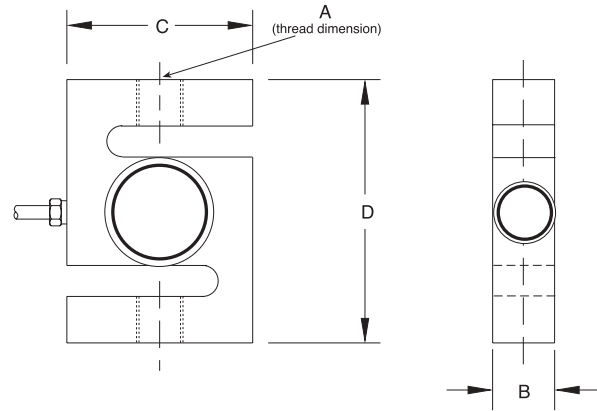
Manufacturer	Model
Celltron	(see page 187) STC-SS

WEIGH MODULE AVAILABLE

Model	Page #
ITCM Isolated Tension Cell Mount	360



60063 S-Beam, Stainless Steel Welded-seal, IP67 1:5000 Class III, 1:10,000 Class III L Single Cell



RATED CAPACITY	DIMENSIONS			
	A	B	C	D
lb/inches				
500-3000	1/2-20	1.00	2.00	3.00
5000-10,000	3/4-16	1.00	3.50	4.75
15,000	1-14	1.25	4.00	5.50
20,000	1 1/4-12	2.00	5.00	7.00
kg/millimeters				
226.8-1360.8	1/2-20	25.4	50.8	76.2
2268.0-4535.9	3/4-16	25.4	88.9	120.7
6803.9	1-14	31.8	101.6	139.7
9071.9	1 1/4-12	76.2	127.0	177.8

SPECIFICATIONS:

Full Scale Output:	2.0 mV/V	Hysteresis:	0.02% Full scale
Bridge Resistance:	350 ohms, nominal	Insulation Resistance:	5000 megohms
Material/Finish:	Stainless steel	Seal Type:	Welded-seal, IP67
Temperature:	Compensated range 0°F to 150°F/-18°C to 65°C	Cable Length:	20'/6.1m
Manufacturer:		Cable Color Code:	Red + Excitation Black - Excitation Green ... + Signal White - Signal
Model Number:	60063	Warranty:	2 years
Safe Overload:	150% Full scale		
Rated Excitation:	10V DC (15V maximum)		
Nonlinearity:	0.03% Full scale		

60063 ORDER INFORMATION

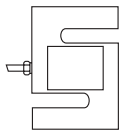
Load Rating	Part #	Suggested List Price
NTEP		
500 lb (226.8 kg)	36272	
750 lb (340.2 kg)	36273	
1000 lb (453.6 kg)	36274	
1500 lb (680.4 kg)	36275	
2000 lb (907.2 kg)	36276	
2500 lb (1134.0 kg)	36277	
3000 lb (1360.8 kg)	36278	
5000 lb (2268.0 kg)	36279	
Non-NTEP		
10,000 lb (4535.9 kg)	36280	
15,000 lb (6803.9 kg)	36281	
20,000 lb (9071.9 kg)	36282	

INTERCHANGEABLE PRODUCTS

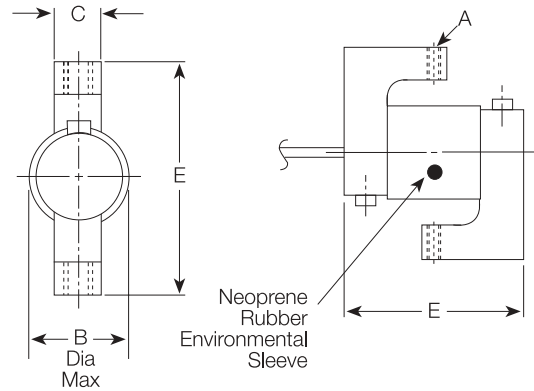
Manufacturer	Model
Rice Lake Weighing Systems (see page 105) RL20001 HE

WEIGH MODULE AVAILABLE

Model	Page #
ITCM Isolated Tension Cell Mount	360



60036 S-Beam, Alloy Steel, IP65



RATED CAPACITY

lb/inches
25-150

A
1/4-28 UNF-2B

B
1.12

DIMENSIONS

C
.50

D
2.12

E
2.50

kg/millimeters
11.3-68.0

1/4-28 UNF-2B

28.5

12.7

53.9

63.5

SPECIFICATIONS:

Full Scale Output: 3.0 mV/V
 Bridge Resistance: 350 ohms, nominal
 Material/Finish: High-alloy steel, nickel plated
 Temperature: Compensated range
 0°F to 150°F/-18°C to 65°C
 Manufacturer
 Model Number: 60036
 Safe Overload: 150% Full scale
 Rated Excitation: 10V DC (15V maximum)
 Nonlinearity: 0.03% Full scale

Hysteresis: 0.03% Full scale
 Insulation Resistance: 5000 megohms
 Seal Type: Environmentally-sealed with neoprene sleeve, IP65
 Cable Length: 20'±6.1m
 Cable Color Code: Red + Excitation
 Black - Excitation
 Green + Signal
 White - Signal
 Warranty: 2 years

60036 ORDER INFORMATION

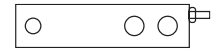
Load Rating	Part #	Suggested List Price
25 lb (11.3 kg)	17038	
50 lb (22.7 kg)	17039	
75 lb (34.0 kg)	17040	
100 lb (45.4 kg)	17041	
150 lb (68.0 kg)	17042	

INTERCHANGEABLE PRODUCTS

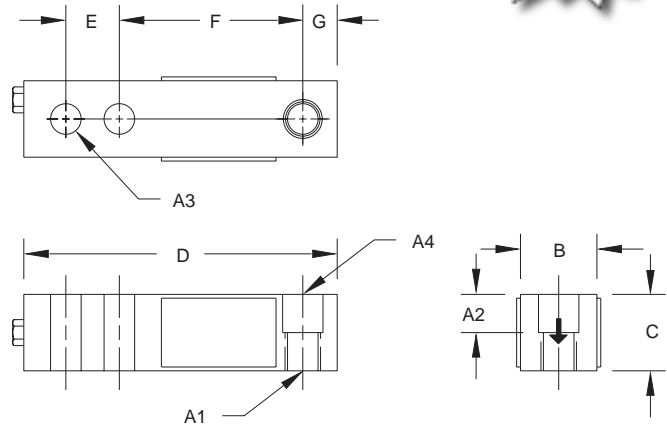
Manufacturer	Model
Rice Lake Weighing Systems	(see page 102) RL20000
Celtron	(see page 185) STC
Revere Transducers	(see page 256) 9363

WEIGH MODULE AVAILABLE

Model	Page #
ITCM Isolated Tension Cell Mount	360



65023A-5297 Single-Ended Shear Beam, Alloy Steel NTEP 1:5000 Class III Multiple Cell, IP67



RATED CAPACITY	DIMENSIONS										
	A1	A2	A3	A4	B	C	D	E	F	G	
lb/inches											
1000-2500	1/2-20 UNF-2B	.62	.53	.53 DIA.	1.25	1.25	5.12	1.00	3.00	.50	
kg/millimeters											
453.6-1134.0	1/2-20 UNF-2B	15.8	13.5	13.5 DIA.	31.8	31.8	130.1	25.4	76.2	12.7	

SPECIFICATIONS:

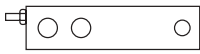
Full Scale Output:	3.0 mV/V	Hysteresis:	0.02% Full scale
Bridge Resistance:	350 ohms, nominal	Insulation Resistance:	5000 megohms
Material/Finish:	High-alloy steel, nickel plated	Deflection at Capacity:	1000 lb = .013"/.33mm, 2500 lb = .015"/.38mm
Temperature:	Compensated range 14°F to 104°F/-10°C to 40°C	Seal Type:	Environmentally-sealed, IP67
Manufacturer:		Cable Length:	8.5'/2.6m
Model Number:	65023A-XX-5297	Cable Color Code:	Red + Excitation Black - Excitation Green + Signal White - Signal
Safe Overload:	150% Full scale	Warranty:	2 years
Rated Excitation:	10V DC (15V maximum)		
Nonlinearity:	0.03% Full scale		

ORDER INFORMATION

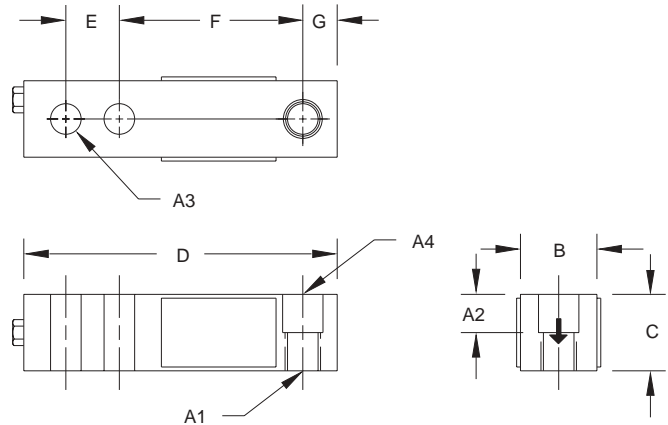
Load Rating	Part #	Suggested List Price
1000 lb (453.6 kg)	68825	
2500 lb (1134.0 kg)	68824	

INTERCHANGEABLE PRODUCTS

Manufacturer	Model
Fairbanks	65023A-XX-5164



65023A-5141 Single-Ended Shear Beam, Alloy Steel NTEP 1:5000 Class III Multiple Cell, IP67



RATED CAPACITY	DIMENSIONS										
	A1	A2	A3	A4	B	C	D	E	F	G	
lb/inches											
1000-2500	1/2-20 UNF-2B	.62	.53	.53 DIA.	1.25	1.25	5.12	1.00	3.00	.50	
kg/millimeters											
453.6-1134.0	1/2-20 UNF-2B	15.8	13.5	13.5 DIA.	31.8	31.8	130.1	25.4	76.2	12.7	

SPECIFICATIONS:

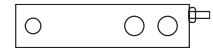
Full Scale Output:	3.0 mV/V	Hysteresis:	0.02% Full scale
Bridge Resistance:	350 ohms, nominal	Insulation Resistance:	5000 megohms
Material/Finish:	High-alloy steel, nickel plated	Deflection at Capacity:	1000 lb = .013"/.33mm, 2500 lb = .015"/.38mm
Temperature:	Compensated range 14°F to 104°F/-10°C to 40°C	Seal Type:	Environmentally-sealed, IP67
Manufacturer:		Cable Length:	9'/.2.7m
Model Number:	65023A-XX-5141	Cable Color Code:	Red + Excitation Black - Excitation Green + Signal White - Signal
Safe Overload:	150% Full scale	Warranty:	2 years
Rated Excitation:	10V DC (15V maximum)		
Nonlinearity:	0.03% Full scale		

ORDER INFORMATION

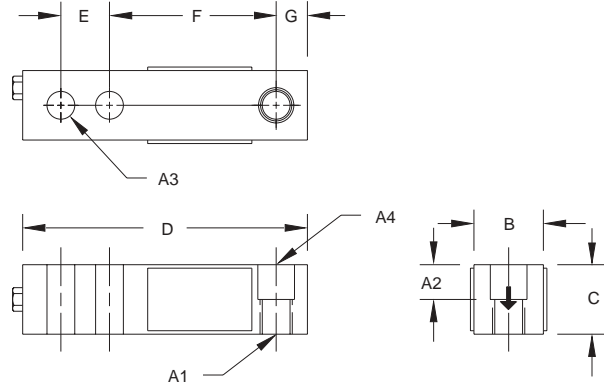
Load Rating	Part #	Suggested List Price
1000 lb (453.6 kg)	68827	
2500 lb (1134.0 kg)	68826	

INTERCHANGEABLE PRODUCTS

Manufacturer	Model
Pennsylvania	65023A-XX-5141



65023 Single-Ended Shear Beam, Alloy Steel NTEP 1:5000 Class III Multiple Cell, IP67



RATED CAPACITY	DIMENSIONS									
	A1	A2	A3	A4	B	C	D	E	F	G
lb/inches										
500	1/2-20 UNF-2B	.50	.53	.53 DIA.	1.25	1.00	5.12	1.00	3.00	.50
1000-4000	1/2-20 UNF-2B	.62	.53	.53 DIA.	1.25	1.25	5.12	1.00	3.00	.50
5000-10,000	3/4-16 UNF-2B	.75	.78	.78 DIA.	1.50	1.50	6.75	1.50	3.75	.75
15,000-20,000	1-14 UNS-2B	1.00	1.03	1.03 DIA.	2.00	2.00	8.88	2.00	4.88	1.00
kg/millimeters										
226.8	1/2-20 UNF-2B	12.7	13.5	13.5 DIA.	31.8	25.4	130.1	25.4	76.2	12.7
453.6-1814.4	1/2-20 UNF-2B	15.8	13.5	13.5 DIA.	31.8	31.8	130.1	25.4	76.2	12.7
2268.0-4535.9	3/4-16 UNF-2B	19.1	19.8	19.8 DIA.	38.1	38.1	171.5	38.1	95.3	19.1
6803.9-9071.9	1-14 UNS-2B	25.4	26.2	26.2 DIA.	50.8	50.8	225.6	50.8	124.0	25.4

SPECIFICATIONS:

Full Scale Output:	3.0 mV/V	Insulation Resistance:	5000 megohms
Bridge Resistance:	350 ohms, nominal	Deflection at Capacity:	500-1000 lb = .013"/.33mm, 2000-3000 lb = .015"/.38mm, 4000-5000 lb = .025"/.64mm, 10,000 lb = .032"/.81mm, 15,000-20,000 lb = .038"/.97mm
Material/Finish:	High-alloy steel, nickel plated	Seal Type:	Environmentally-sealed, IP67
Temperature:	Compensated range 14°F to 104°F/-10°C to 40°C	Cable Length:	20'/6.1m
Manufacturer		Cable Color Code:	Red + Excitation Black - Excitation Green + Signal White - Signal
Model Number:	65023-XX-X107 (Threaded), 65023-XX (Thru)	Warranty:	2 years
Safe Overload:	150% Full scale		
Rated Excitation:	10V DC (15V maximum)		
Nonlinearity:	0.03% Full scale		
Hysteresis:	0.02% Full scale		

65023 (THREADED HOLE) ORDER INFORMATION

Load Rating	Part #	Suggested List Price
Thru Hole, Non-NTEP		
500 lb (226.8 kg)	17125	
15,000 lb (6803.9 kg)	17155	
20,000 lb (9071.9 kg)	17159	
Thru Hole, NTEP 1:5000		
1000 lb (453.6 kg)	21507	
1500 lb (680.4 kg)	69832	
2000 lb (907.2 kg)	21508	
2500 lb (1134.0 kg)	21509	
3000 lb (1360.8 kg)	21510	
4000 lb (1814.4 kg)	21511	
5000 lb (2268.0 kg)	21512	
10,000 lb (4535.9 kg)	21513	

65023 (THRU HOLE) ORDER INFORMATION

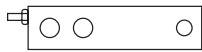
Load Rating	Part #	Suggested List Price
Thru Hole, Non-NTEP		
1000 lb (453.6 kg)	17126	\$295.00
2000 lb (907.2 kg)	17130	\$295.00
2500 lb (1134.0 kg)	17134	\$295.00
4000 lb (1814.4 kg)	17142	\$295.00
5000 lb (2268.0 kg)	17146	\$375.00
10,000 lb (4535.9 kg)	17150	\$375.00
15,000 lb (6803.9 kg)	17154	\$650.00
20,000 lb (9071.9 kg)	17158	\$650.00

INTERCHANGEABLE PRODUCTS

Manufacturer	Model
Rice Lake Weighing Systems (see page 112) RL35023
Celtron (see page 189) SQB

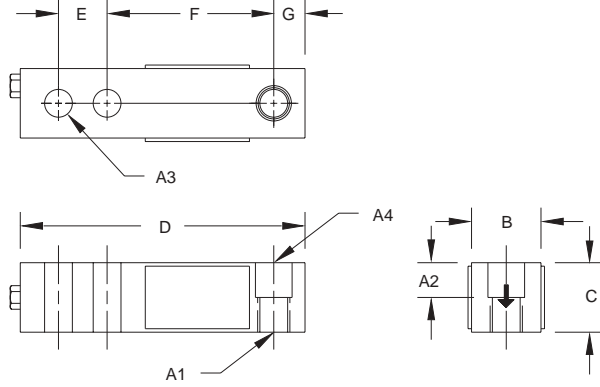
WEIGH MODULE AVAILABLE

Model	Page #
RL50210 TA	31
RL1800 Series	41



65023 SS Single-Ended Beam, Stainless Steel Threaded and Thru, IP67

EXPANDED!
Capacity Range



RATED CAPACITY	DIMENSIONS										
	A1	A2	A3	A4	B	C	D	E	F	G	
lb/inches											
250-500	1/2-20 UNF-2B	.50	.53	.53 DIA.	1.25	1.00	5.12	1.00	3.00	.50	
1000-4000	1/2-20 UNF-2B	.62	.53	.53 DIA.	1.25	1.25	5.12	1.00	3.00	.50	
5000-10,000	3/4-16 UNF-2B	.75	.78	.78 DIA.	1.50	1.50	6.75	1.50	3.75	.75	
15,000-20,000	1-14 UNS-2B	1.00	1.03	1.03 DIA.	2.00	2.00	8.88	2.00	4.88	1.00	
kg/millimeters											
113.4-226.8	1/2-20 UNF-2B	12.7	13.5	13.5 DIA.	31.8	25.4	130.1	25.4	76.2	12.7	
453.6-1814.4	1/2-20 UNF-2B	15.8	13.5	13.5 DIA.	31.8	31.8	130.1	25.4	76.2	12.7	
2268.0-4535.9	3/4-16 UNF-2B	19.1	19.8	19.8 DIA.	38.1	38.1	171.5	38.1	95.3	19.1	
6803.9-9071.9	1-14 UNS-2B	25.4	26.2	26.2 DIA.	50.8	50.8	225.6	50.8	124.0	25.4	

SPECIFICATIONS:

Full Scale Output:	3.0 mV/V	Insulation Resistance:	5000 megohms
Bridge Resistance:	350 ohms, nominal	Deflection at Capacity:	250-1000 lb = .013"/.33mm, 2000-2500 lb = .015"/.38mm, 4000-5000 lb = .025"/.64mm, 10,000 lb = .032"/.81mm, 15,000-20,000 lb = .038"/.97mm
Material/Finish:	Stainless steel	Seal Type:	Environmentally-sealed, IP67
Temperature:	Compensated range 0°F to 150°F/-18°C to 65°C	Cable Length:	20'±6.1m
Manufacturer		Cable Color Code:	Red + Excitation Black - Excitation Green + Signal White - Signal
Model Number:	65023-XX-0113 (Threaded), 65023-XX-0114 (Thru)	Warranty:	2 years
Safe Overload:	150% Full scale		
Rated Excitation:	10V DC (15V maximum)		
Nonlinearity:	0.03% Full scale		
Hysteresis:	0.02% Full scale		

65023 SS ORDER INFORMATION

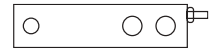
Load Rating	Part #	Suggested List Price
Threaded Hole		
250 lb (113.4)	46499	
500 lb (226.8 kg)	17188	
1000 lb (453.6 kg)	17128	
2000 lb (907.2 kg)	17132	
2500 lb (1134.0 kg)	17136	
4000 lb (1814.4 kg)	17144	
5000 lb (2268.0 kg)	17148	
10,000 lb (4535.9 kg)	17152	
15,000 lb (6803.9 kg)	17156	
20,000 lb (9071.9 kg)	17160	
Thru Hole		
1000 lb (453.6 kg)	17129	
2000 lb (907.2 kg)	17133	
2500 lb (1134.0 kg)	17137	
4000 lb (1814.4 kg)	17145	
5000 lb (2268.0 kg)	17149	
10,000 lb (4535.9 kg)	17153	
15,000 lb (6803.9 kg)	17157	
20,000 lb (9071.9 kg)	17161	

INTERCHANGEABLE PRODUCTS

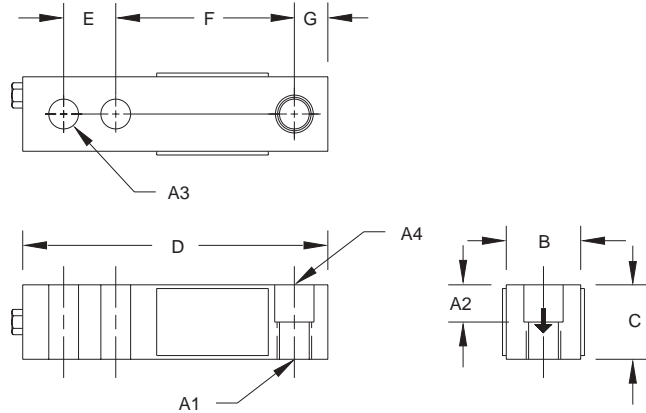
Manufacturer	Model
Rice Lake Weighing Systems	RL35023S

WEIGH MODULE AVAILABLE

Model	Page #
RL50210 TA	31
RL1800 Series	41



65023 S Single-Ended Shear Beam, Stainless Steel NTEP 1:5000 Class III Multiple Cell, IP67



RATED CAPACITY	DIMENSIONS									
	A1	A2	A3	A4	B	C	D	E	F	G
lb/inches										
1000-4000	1/2-20 UNF-2B	.62	.53	.53 DIA.	1.25	1.25	5.12	1.00	3.00	.50
5000-10,000	3/4-16 UNF-2B	.75	.78	.78 DIA.	1.50	1.50	6.75	1.50	3.75	.75
kg/millimeters										
453.6-1814.4	1/2-20 UNF-2B	15.8	13.5	13.5 DIA.	31.8	31.8	130.1	25.4	76.2	12.7
2268.0-4535.9	3/4-16 UNF-2B	19.1	19.8	19.8 DIA.	38.1	38.1	171.5	38.1	95.3	19.1

SPECIFICATIONS:

Full Scale Output: 3.0 mV/V
Bridge Resistance: 350 ohms, nominal
Material/Finish: Stainless steel
Temperature: Compensated range
 14°F to 104°F/-10°C to 40°C
Manufacturer Model Number: 65023S-XX-5113
Safe Overload: 150% Full scale
Rated Excitation: 10V DC (15V maximum)
Nonlinearity: 0.03% Full scale
Hysteresis: 0.02% Full scale

Insulation Resistance: 5000 megohms
Deflection at Capacity: 1000 lb = .013"/.33mm, 2000-2500 lb = .015"/.38mm, 4000-5000 lb = .025"/.64mm, 10,000 lb = .032"/.81mm
Seal Type: Environmentally-sealed, IP67
Cable Length: 20'/6.1m
Cable Color Code: Red + Excitation
 Black - Excitation
 Green + Signal
 White - Signal
Warranty: 2 years

65023 S ORDER INFORMATION

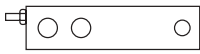
Load Rating	Part #	Suggested List Price
Threaded Hole		
1000 lb (453.6 kg)	28925	
2000 lb (907.2 kg)	28926	
2500 lb (1134.0 kg)	28927	
4000 lb (1814.4 kg)	28929	
5000 lb (2268.0 kg)	28930	
10,000 lb (4535.9 kg)	28931	

INTERCHANGEABLE PRODUCTS

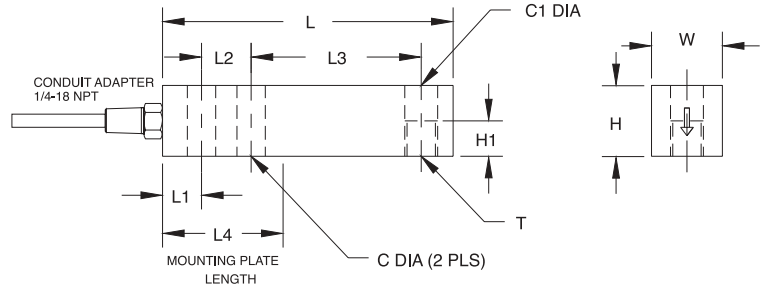
Manufacturer	Model
Rice Lake Weighing Systems	(see page 113) RL35023S
Sensortronics	(see page 300) 65023 SS

WEIGH MODULE AVAILABLE

Model	Page #
RL50210 TA	31
RL1800 Series	41



65083 Single-Ended Beam, Stainless Steel Welded-seal, IP67



RATED CAPACITY

lb/inches
1000-4000
5000-10,000

	C	C1	H	H1	L	L1	L2	L3	L4	T	W
1000-4000	.53	.53	1.22	.61	5.12	.62	1.00	3.00	2.25	1/2-20 UNF-2B	1.22
5000-10,000	.78	.78	1.50	.75	6.75	.75	1.50	3.75	3.00	3/4-16 UNF-2B	1.50

kg/millimeters

453.6-1814.4
2268.0-4535.9

453.6-1814.4	13.5	13.5	31.0	15.5	130.0	15.7	25.4	76.2	57.2	1/2-20 UNF-2B	31.0
2268.0-4535.9	19.8	19.8	38.1	19.1	171.5	19.1	38.1	95.3	76.2	3/4-16 UNF-2B	38.1

SPECIFICATIONS:

Full Scale Output: 3.0 mV/V
 Bridge Resistance: 350 ohms, nominal
 Material/Finish: Stainless steel
 Temperature: Operating range 0°F to 150°F/-18°C to 65°C
 Manufacturer
 Model Number: 65083-XX-0100
 Safe Overload: 150% Full scale
 Rated Excitation: 10V DC (15V maximum)
 Combined Error: 0.3% Full scale
 Non-repeatability: 0.01% Full scale

Insulation Resistance: 5000 megohms
 Deflection at Capacity: 1000 lb = .013"/.33mm, 2500 lb = .015"/.38mm, 4000-5000 lb = .025"/.64mm, 10,000 lb = .032"/.81mm
 Seal Type: Welded-seal*, IP67
 Cable Length: 20'±6.1m
 Conduit Adapter Size: 1/4-18 NPT
 Cable Color Code: Red + Excitation
 Black - Excitation
 Green + Signal
 White - Signal
 Warranty: 2 years

65083 ORDER INFORMATION

Load Rating	Part #	Suggested List Price
1000 lb (453.6 kg)	17262
2500 lb (1134.0 kg)	17263
4000 lb (1814.4 kg)	17264
5000 lb (2268.0 kg)	17265
10,000 lb (4535.9 kg)	17266

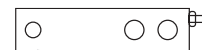
INTERCHANGEABLE PRODUCTS

Manufacturer	Model
Rice Lake Weighing Systems (see page 114) RL35083

WEIGH MODULE AVAILABLE

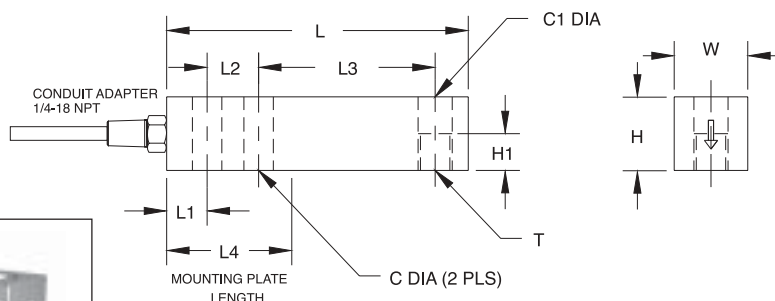
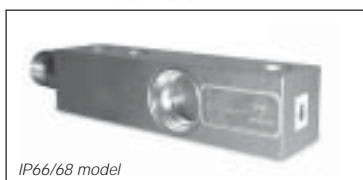
Model	Page #
RL50210 TA 31
RL1800 Series 41

* Conduit is recommended for maximum protection against the ingress of water and moisture through the cable entry.



65083 S Single-Ended Beam, Stainless Steel Welded-seal, IP67, IP66/68, NTEP 1:5000 Class III Multiple Cell

EXPANDED!
Capacity Range



RATED CAPACITY

	C	C1	H	H1	DIMENSIONS						
					L	L1	L2	L3	L4	T	W
lb/inches											
1000-4000	.53	.53	1.22	.61	5.12	.62	1.00	3.00	2.25	1/2-20 UNF-2B	1.22
5000-10,000	.78	.78	1.50	.75	6.75	.75	1.50	3.75	3.00	3/4-16 UNF-2B	1.50
kg/millimeters											
453.6-1814.4	13.5	13.5	31.0	15.5	130.0	15.7	25.4	76.2	57.2	1/2-20 UNF-2B	31.0
2268.0-4535.9	19.8	19.8	38.1	19.1	171.5	19.1	38.1	95.3	76.2	3/4-16 UNF-2B	38.1

SPECIFICATIONS:

Full Scale Output:	2.0 mV/V	Insulation Resistance:	5000 megohms
Bridge Resistance:	350 ohms, nominal	Deflection at Capacity:	1000 lb = .013"/.33mm, 2500 lb = .015"/.38mm, 4000-5000 lb = .025"/.64mm, 10,000 lb = .032"/.81mm
Material/Finish:	Stainless steel	Seal Type:	Welded-seal, IP67; Hermetically-sealed*, IP66/68
Temperature:	Operating range 14°F to 104°F/-10°C to 40°C	Cable Length:	20'±6.1m
Manufacturer		Conduit Adapter Size:	1/4-18 NPT**
Model Number:	65083S-5100 (IP67 model) 65083S-5117 (IP66/68 model)	Cable Color Code:	Red + Excitation Black - Excitation Green ... + Signal White - Signal
Safe Overload:	150% Full scale	Warranty:	2 years
Rated Excitation:	10V DC (15V maximum)		
Combined Error:	0.02% Full scale		
Non-repeatability:	0.01% Full scale		

65083 S ORDER INFORMATION

Load Rating	Part #	Suggested List Price
Welded-seal IP67		
1000 lb (453.6 kg)	33552	
2500 lb (1134.0 kg)	33553	
4000 lb (1814.4 kg)	33554	
5000 lb (2268.0 kg)	33555	
10,000 lb (4535.9 kg)	33556	
Hermetically-sealed IP66/68		
1000 lb (453.6 kg)	33734	
2500 lb (1134.0 kg)	33735	
4000 lb (1814.4 kg)	33736	
5000 lb (2268.0 kg)	33737	
10,000 lb (4535.9 kg)	33738	

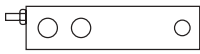
INTERCHANGEABLE PRODUCTS

Manufacturer	Model
Rice Lake Weighing Systems	(see page 115) RL35082
Tedea-Huntleigh	(see page 332) 3510-lbs

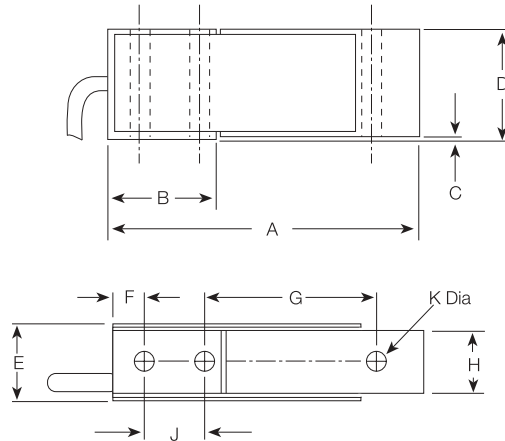
WEIGH MODULE AVAILABLE

Model	Page #
RL50210 TA	31
RL1800 Series	41

* Conduit is recommended for maximum protection against the ingress of water and moisture through the cable entry.
** IP66/68 version have 1/2-14 NPT conduit adapters



65007 Single-Ended Beam, Alloy Steel, IP67



RATED CAPACITY

25-250
lb/inches

	A	B	C	D	E	F	G	H	J	K
25-250	2.38	.90	.03	1.00	.63	.25	1.31	.50	.50	.171

11.3-113.4
kg/millimeters

11.3-113.4	60.5	22.9	.76	25.4	16.0	6.4	33.3	12.7	12.7	4.3
------------	------	------	-----	------	------	-----	------	------	------	-----

DIMENSIONS

SPECIFICATIONS:

Full Scale Output: 3.0 mV/V
 Bridge Resistance: 350 ohms, nominal
 Material/Finish: High-alloy steel, nickel plated
 Temperature: Compensated range
 0°F to 150°F/-18°C to 65°C
 Manufacturer: Sensortronics
 Model Number: 65007
 Safe Overload: 150% Full scale
 Rated Excitation: 10V DC
 Nonlinearity: 0.03% Full scale

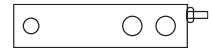
Hysteresis: 0.02% Full scale
 Insulation Resistance: 5000 megohms
 Seal Type: Environmentally-sealed, IP67
 Cable Length: 20'/6.1m
 Cable Color Code: Red + Excitation
 Black - Excitation
 Green ... + Signal
 White - Signal
 Warranty: 2 years

65007 ORDER INFORMATION

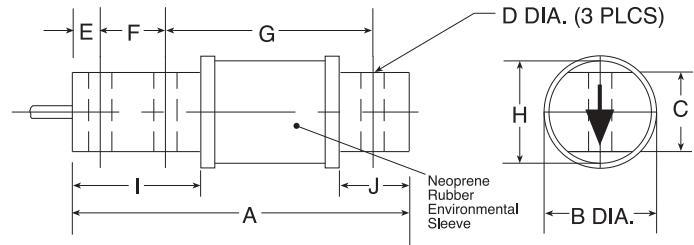
Load Rating	Part #	Suggested List Price
25 lb (11.3 kg)	30158	
50 lb (22.7 kg)	30159	
75 lb (34.0 kg)	30160	
150 lb (68.0 kg)	17457	
250 lb (113.4 kg)	17458	

INTERCHANGEABLE PRODUCTS

Manufacturer	Model
Celtron	(see page 191) MBB
Interface®	MB
Revere Transducers	CBU



60040 Single-Ended Beam, Alloy Steel, IP65



RATED CAPACITY	DIMENSIONS									
	A	B	C	D	E	F	G	H	I	J
lb/inches 25-500	2.81	1.30	.62	.26	.25	.50	1.81	1.00	1.00	1.00
kg/millimeters 11.3-226.8	71.4	33.0	15.8	6.6	6.4	12.7	46.0	25.4	25.4	12.7

SPECIFICATIONS:

Full Scale Output:	3.0 mV/V	Insulation Resistance:	5000 megohms
Bridge Resistance:	350 ohms, nominal	Deflection at Capacity:	25-50 lb = .008"/20mm, 75-100 lb = .010"/25mm, 150 lb = .012"/30mm, 250 lb = .016"/41mm, 500 lb = .025"/64mm
Material/Finish:	High-alloy steel, nickel plated	Seal Type:	Environmentally-sealed with a neoprene sleeve, IP65
Temperature:	Compensated range 0°F to 150°F/-18°C to 65°C	Cable Length:	20'/6.1m
Manufacturer		Cable Color Code:	Red + Excitation Black - Excitation Green ... + Signal White ... - Signal
Model Number:	60040	Warranty:	2 years
Safe Overload:	150% Full scale		
Rated Excitation:	10V DC (15V maximum)		
Nonlinearity:	0.03% Full scale		
Hysteresis:	0.02% Full scale		

60040 ORDER INFORMATION

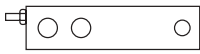
Load Rating	Part #	Suggested List Price
25 lb (11.3 kg)	17369	
50 lb (22.7 kg)	17370	
75 lb (34.0 kg)	17371	
100 lb (45.4 kg)	17372	
150 lb (68.0 kg)	17373	
250 lb (113.4 kg)	17374	
500 lb (226.8 kg)	17375	

INTERCHANGEABLE PRODUCTS

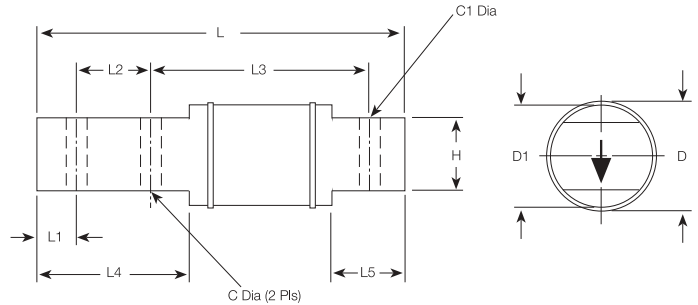
Manufacturer	Model
Rice Lake Weighing Systems	(see page 125) RL50210
Revere Transducers	5503
Artech	50210
Rice Lake Weighing Systems	(see page 126) RL50210SS

WEIGH MODULE AVAILABLE

Model	Page#
RL50210 TA	31



60030 Single-Ended Beam, Alloy Steel, IP65



RATED CAPACITY	DIMENSIONS										
	C	C1	D	D1	H	L	L1	L2	L3	L4	L5
lb/inches 50-300	.26	.172	1.12	1.00	.62	3.75	.25	.50	2.75	1.00	.69
kg/millimeters 22.7-136.1	6.6	4.4	28.5	25.4	15.8	95.3	6.4	12.7	69.9	25.4	17.5

SPECIFICATIONS:

Full Scale Output:	3.0 mV/V	Insulation Resistance:	5000 megohms
Bridge Resistance:	350 ohms, nominal	Seal Type:	Environmentally-sealed with a neoprene sleeve, IP65
Material/Finish:	High-alloy steel, nickel plated	Cable Length:	20' / 6.1m
Temperature:	Compensated range 0°F to 150°F / -18°C to 65°C	Cable Color Code:	Red + Excitation Black - Excitation Green ... + Signal White - Signal
Manufacturer		Warranty:	2 years
Model Number:	60030		
Safe Overload:	150% Full scale		
Rated Excitation:	10V DC		
Nonlinearity:	0.04% Full scale		
Hysteresis:	0.02% Full scale		

60030 ORDER INFORMATION

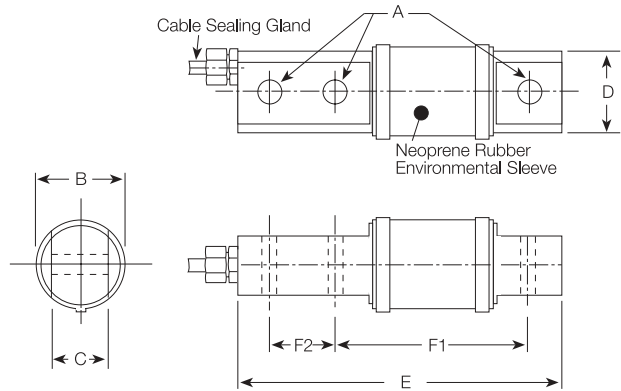
Load Rating	Part #	Suggested List Price
50 lb (22.7 kg)	17365	
75 lb (34.0 kg)	17366	
150 lb (68.0 kg)	17367	
300 lb (136.1 kg)	17368	

INTERCHANGEABLE PRODUCTS

Manufacturer	Model
Electroscale	LCB Bases



60018 Single-Ended Beam, Alloy Steel, IP65



RATED CAPACITY

500-2500

226.8-1134.0

DIMENSIONS

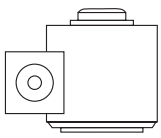
	A	B	C	D	E	F1	F2
lb/inches	.52	1.38	.75	1.25	5.12	3.00	1.00
kg/millimeters	13.2	35.1	19.1	31.8	130.1	76.2	25.4

SPECIFICATIONS:

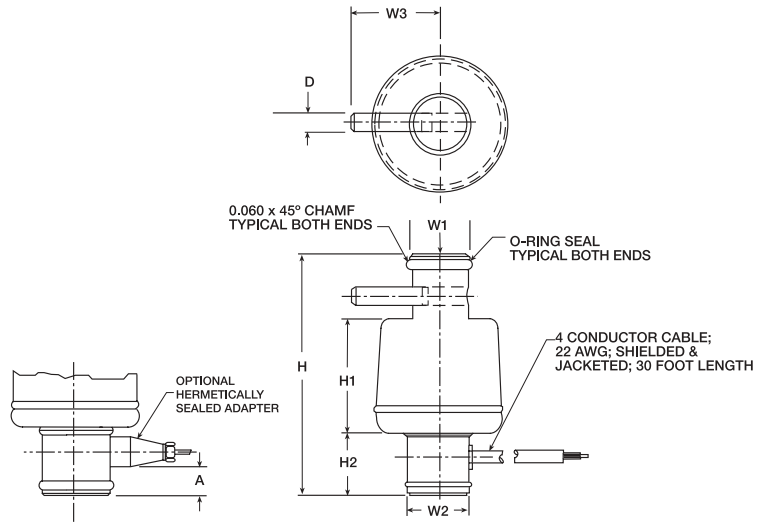
Full Scale Output:	3.0 mV/V	Hysteresis:	0.03% Full scale
Bridge Resistance:	350 ohms, nominal	Insulation Resistance:	5000 megohms
Material/Finish:	High-alloy steel, nickel plated	Seal Type:	Environmentally-sealed with a neoprene sleeve, IP65
Temperature:	Compensated range 0°F to 150°F/-18°C to 65°C	Cable Length:	20'/6.1m
Manufacturer		Cable Color Code:	Red + Excitation Black - Excitation Green ... + Signal White - Signal
Model Number:	60018	Warranty:	2 years
Safe Overload:	150% Full scale		
Rated Excitation:	10V DC (15V maximum)		
Nonlinearity:	0.05% Full scale		

60018 ORDER INFORMATION

Load Rating	Part #	Suggested List Price
500 lb (226.8 kg)	17362	
1000 lb (453.6 kg)	17363	
2500 lb (1134.0 kg)	17364	



65114 Rocker Column, Stainless Steel Hermetically-sealed, IP68, NTEP 1:10,000



RATED CAPACITY	DIMENSIONS							
	A	D	H	H1	H2	W1	W2	W3
lb/inches								
50,000	.62	.38	6.00	2.82	1.59	1.46	1.46	2.18 ± .06
50,000 LE	.62	.38	7.56	2.82	1.59	1.46	1.46	2.18 ± .06
100,000	.62	.38	8.86	2.82	1.59	1.46	1.46	2.18 ± .06
kg/millimeters								
22,680.0	15.6	9.7	152.4	71.6	40.4	37.08	37.1	55.4 ± 1.5
22,680.0 LE	15.6	9.7	192.0	71.6	40.4	37.08	37.1	55.4 ± 1.5
45,360.0	15.6	9.7	225.0	71.6	40.4	37.08	37.1	55.4 ± 1.5

SPECIFICATIONS:

Full Scale Output:	2.0 mV/V nominal	Combined Error:	0.03% Full scale
Bridge Resistance:	1000 Ohms	Insulation Resistance:	1000 megohms
Material/Finish:	Stainless steel	Seal Type:	Hermetically-sealed, IP68
Temperature:	Compensated range 14°F to 104°F/-10°C to 40°C	Cable Length:	35'/10.6m
Manufacturer		Cable Color Code:	Red + Excitation Black - Excitation Green + Signal White - Signal
Model Number:	65114SXX-1000H	Warranty:	2 years
Safe Overload:	150% Full scale		
Rated Excitation:	10V AC/DC (25V maximum)		

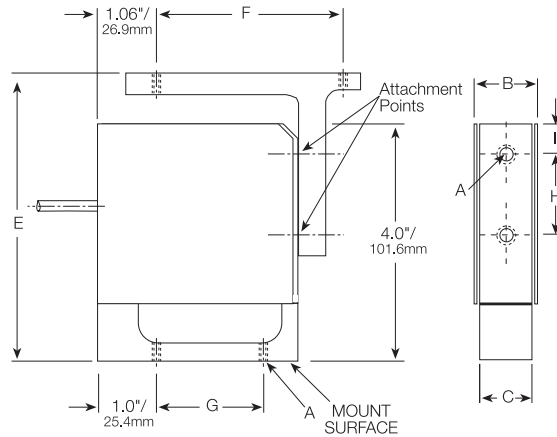
65114 ORDER INFORMATION

Load Rating	Part #	Suggested List Price
50,000 lb (22,680.0 kg)	46497	
50,000 lb LE (22,680.0 kg)	47952	
100,000 lb (45,360.0 kg)	47953	

LE refers to large envelope



60008 Single Point, Alloy Steel, IP61



RATED CAPACITY	DIMENSIONS							
	A	B	C	E	F	G	H	I
lb/inches								
1-10	1/4-28 UNF	.62	.50	4.75	2.75	1.75	1.52	.65
20-50	1/4-28 UNF	.88	.75	4.75	2.75	1.75	1.52	.65
100	1/4-28 UNF	1.20	1.00	4.75	2.75	1.75	1.52	.65
kg/millimeters								
0.5-4.5	1/4-28 UNF	15.8	12.7	120.7	69.9	44.5	38.6	16.5
9.1-22.7	1/4-28 UNF	22.4	19.1	120.7	69.9	44.5	38.6	16.5
45.4	1/4-28 UNF	30.5	25.4	120.7	69.9	44.5	38.6	16.5

SPECIFICATIONS:

Full Scale Output:	2.0 mV/V	Insulation Resistance:	5000 megohms
Bridge Resistance:	350 ohms, nominal	Deflection at Capacity:	1-2 lb = .023"/.58mm, 5-20 lb = .020"/.51mm
Material/Finish:	High-alloy steel, nickel plated	Seal Type:	Environmentally-sealed, IP61
Temperature:	Compensated range 0°F to 150°F/-18°C to 65°C	Max. Platform Size:	1-10 lb = 8" x 8"/203.2mm x 203.2mm; 20-100 lb = 12" x 12"/304.8mm x 304.8mm
Manufacturer		Cable Length:	10'/3.1m
Model Number:	60008	Cable Color Code:	Red + Excitation Black - Excitation Green + Signal White - Signal
Safe Overload:	150% Full scale	Warranty:	2 years
Rated Excitation:	10V DC (25V maximum)		
Nonlinearity:	0.03% Full scale		
Hysteresis:	0.02% Full scale		

60008 ORDER INFORMATION

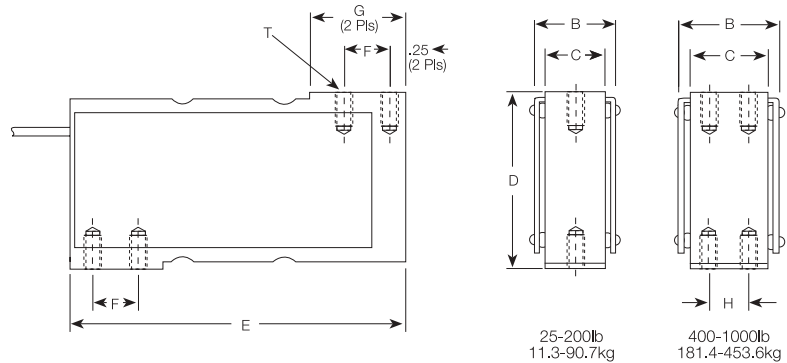
Load Rating	Part #	Suggested List Price
1 lb (0.5 kg)	17409	
2 lb (0.9 kg)	17410	
5 lb (2.3 kg)	17411	
10 lb (4.5 kg)	17412	
20 lb (9.1 kg)	17413	
25 lb (11.3 kg)	17414	
50 lb (22.7 kg)	17415	
100 lb (45.4 kg)	17416	

INTERCHANGEABLE PRODUCTS

Manufacturer	Model
Electroscale	905/910



60048 Single Point, Alloy Steel, IP61



RATED CAPACITY

DIMENSIONS

	T	B	C	D	E	F	G	H
lb/inches								
25-200	1/4-28 UNF x .75 DP	1.25	1.00	3.00	6.00	1.00	1.50	—
400-500	1/4-28 UNF x .75 DP	1.25	1.00	3.00	6.00	1.00	1.50	.50
1000	5/16-24 UNF x .75 DP	1.75	1.50	3.00	6.00	1.00	1.50	1.00
kg/millimeters								
11.3-90.7	1/4-28 UNF x .75 DP	31.8	25.4	76.2	152.4	25.4	38.1	—
181.4-226.8	1/4-28 UNF x .75 DP	31.8	25.4	76.2	152.4	25.4	38.1	12.7
453.6	5/16-24 UNF x .75 DP	44.5	38.1	76.2	152.4	25.4	38.1	25.4

SPECIFICATIONS:

Full Scale Output:	2.0 mV/V nominal	Insulation Resistance:	5000 megohms
Bridge Resistance:	350 ohms, nominal	Deflection at Capacity:	25 lb = .016"/.41mm, 50-100 lb = .013"/.33mm, 200 lb = .015"/.38mm, 400-500 lb = .023"/.58mm, 1000 lb = .016"/.41mm
Material/Finish:	High-alloy steel, nickel plated	Seal Type:	Unpotted, IP61
Temperature:	Compensated range 0°F to 150°F/-18C to 65°C	Cable Length:	10'/3.1m
Manufacturer		Cable Color Code:	Red + Excitation Black - Excitation Green + Signal White - Signal
Model Number:	60048	Warranty:	2 years
Safe Overload:	150% Full scale		
Rated Excitation:	10V DC (15V maximum)		
Nonlinearity:	0.03% Full scale		
Hysteresis:	0.02% Full scale		

60048 ORDER INFORMATION

Load Rating	Part #	Suggested List Price
25 lb (11.3 kg)	17418	
50 lb (22.7 kg)	17420	
100 lb (45.4 kg)	17422	
200 lb (90.7 kg)	17424	
400 lb (181.4 kg)	17426	
500 lb (226.8 kg)	17428	
1000 lb (453.6 kg)	17430	
Adapter Kit (400 & 500 lb)	25562	
Single Adapter (25-200 lb)	17683	

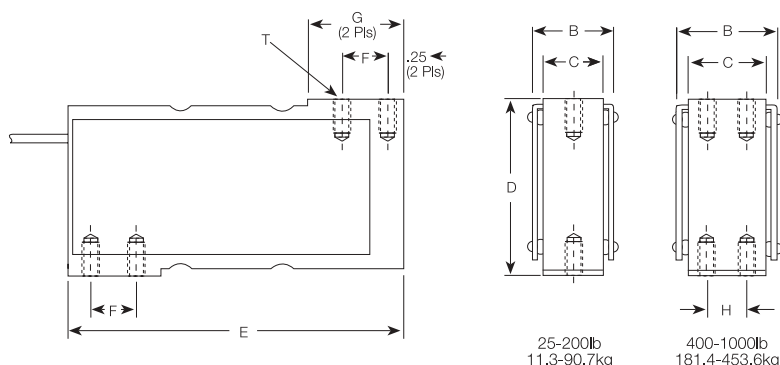
INTERCHANGEABLE PRODUCTS

Manufacturer	Model
NCI/Weightronix	Mark V

Adapter 17683 is needed to use the 60048 load cell in NCI model 3255 and 3256 bases, 25-200 lb (11.3-90.7 kg) capacities. Adapter kit 25562 is needed to convert 400-500 lb (181.4-226.8 kg) capacity cells to these bases.



60048 SS Single Point, Stainless Steel, IP67



25-200lb
11.3-90.7kg

400-1000lb
181.4-453.6kg

RATED CAPACITY

DIMENSIONS

	T	B	C	D	E	F	G	H
lb/inches								
25-200	1/4-28 UNF x .75 DP	1.25	1.00	3.00	6.00	1.00	1.50	—
400-500	1/4-28 UNF x .75 DP	1.25	1.00	3.00	6.00	1.00	1.50	.50
1000	5/16-24 UNF x .75 DP	1.75	1.50	3.00	6.00	1.00	1.50	1.00
kg/millimeters								
11.3-90.7	1/4-28 UNF x .75 DP	31.8	25.4	76.2	152.4	25.4	38.1	—
181.4-226.8	1/4-28 UNF x .75 DP	31.8	25.4	76.2	152.4	25.4	38.1	12.7
453.6	5/16-24 UNF x .75 DP	44.5	38.1	76.2	152.4	25.4	38.1	25.4

SPECIFICATIONS:

Full Scale Output:	2.0 mV/V nominal	Insulation Resistance:	5000 megohms
Bridge Resistance:	350 ohms, nominal	Deflection at Capacity:	25 lb = .016"/.41mm, 50-100 lb = .013"/.33mm, 200 lb = .015"/.38mm, 400-500 lb = .023"/.58mm, 1000 lb = .016"/.41mm
Material/Finish:	Stainless steel	Seal Type:	Environmentally-sealed, potted, IP67
Temperature:	Compensated range 0°F to 150°F/-18C to 65°C	Cable Length:	10'/3.1m
Manufacturer		Cable Color Code:	Red + Excitation Black - Excitation Green + Signal White - Signal
Model Number:	60048-XX-0108	Warranty:	2 years
Safe Overload:	150% Full scale		
Rated Excitation:	10V DC (15V maximum)		
Nonlinearity:	0.03% Full scale		
Hysteresis:	0.02% Full scale		

60048 SS ORDER INFORMATION

Load Rating	Part #	Suggested List Price
25 lb (11.3 kg)	17419	
50 lb (22.7 kg)	17421	
100 lb (45.4 kg)	17423	
200 lb (90.7 kg)	17425	
400 lb (181.4 kg)	17427	
500 lb (226.8 kg)	17429	
1000 lb (453.6 kg)	17431	
Adapter Kit (400 & 500 lb)	25562	
Single Adapter (25-200 lb)	17683	

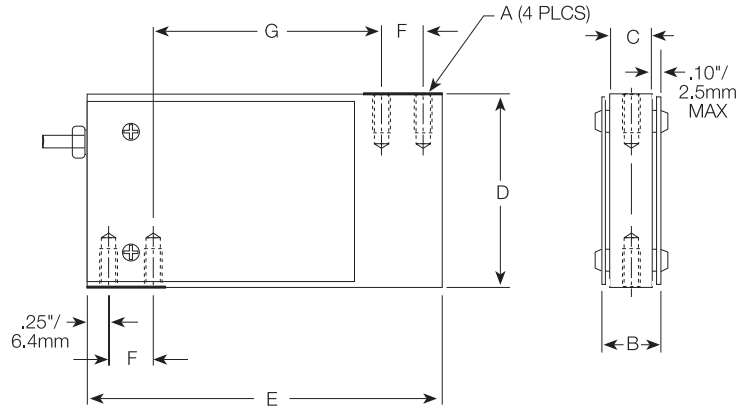
INTERCHANGEABLE PRODUCTS

Manufacturer	Model
NCI/Weightronix	Mark V

Adapter 17683 is needed to use the 60048 load cell in NCI model 3255 and 3256 bases, 25-200 lb (11.3-90.7 kg) capacities. Adapter kit 25562 is needed to convert 400-500 lb (181.4-226.8 kg) capacity cells to these bases.



60051 Single Point Beam, Stainless Steel, IP67



RATED CAPACITY	DIMENSIONS						
	A	B	C	D	E	F	G
lb/inches							
10-25	1/4-28 UNF-2B	.70	.50	2.50	4.63	.75	2.62
50-200	1/4-28 UNF-2B	.95	.75	2.50	4.63	.75	2.62
kg/millimeters							
4.5-11.3	1/4-28 UNF-2B	17.8	12.7	63.5	117.6	19.1	66.6
22.7-90.7	1/4-28 UNF-2B	24.1	19.1	63.5	117.6	19.1	66.6

SPECIFICATIONS:

Full Scale Output:	2.0 mV/V	Hysteresis:	0.02% Full scale
Bridge Resistance:	350 ohms, nominal	Insulation Resistance:	5000 megohms
Material/Finish:	Stainless steel	Deflection at Capacity:	10-15 lb = .014"/.36mm, 25-200 lb = .010"/.25mm
Temperature:	Compensated range 0°F to 150°F/-18°C to 65°C	Seal Type:	Environmentally-sealed, IP67
Manufacturer		Cable Length:	10'/3.1m
Model Number:	60051	Cable Color Code:	Red + Excitation Black - Excitation Green + Signal White - Signal
Safe Overload:	150% Full scale	Warranty:	2 years
Rated Excitation:	10V DC (15V maximum)		
Nonlinearity:	0.03% Full scale		

60051 ORDER INFORMATION

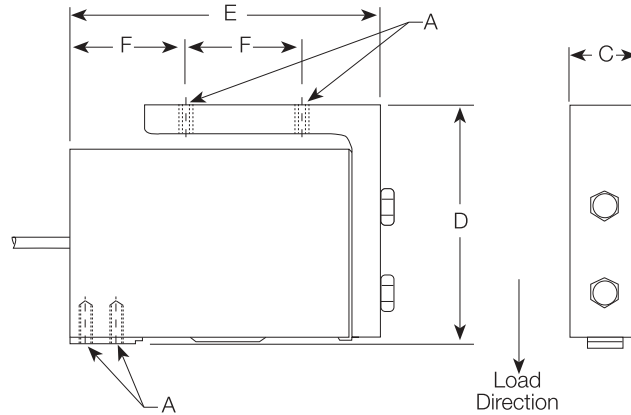
Load Rating	Part #	Suggested List Price
10 lb (4.5 kg)	17432	
15 lb (6.8 kg)	17433	
25 lb (11.3 kg)	17434	
50 lb (22.7 kg)	17435	
100 lb (45.4 kg)	17436	
200 lb (90.7 kg)	17437	

INTERCHANGEABLE PRODUCTS

Manufacturer	Model
NCI®	Mark III
NCI®	Mark IX



65024 Single Point, Alloy Steel, IP61



RATED CAPACITY

lb/inches
2-25

A
1/4-28 UNF-2B

C
1.00

DIMENSIONS

D

3.00

E

4.12

F

1.63

kg/millimeters
0.9-11.3

1/4-28 UNF-2B

25.4

76.2

104.7

41.4

SPECIFICATIONS:

Full Scale Output: 2.0 mV/V
 Bridge Resistance: 350 ohms, nominal
 Material/Finish: High-alloy steel, nickel plated
 Temperature: Compensated range
 0°F to 150°F/-18°C to 65°C
 Manufacturer Model Number: 65024
 Safe Overload: 150% Full scale
 Rated Excitation: 10V DC (15V maximum)
 Nonlinearity: 0.03% Full scale

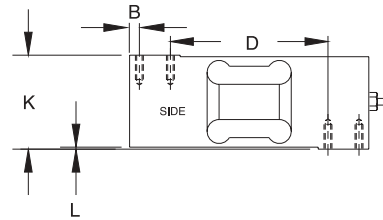
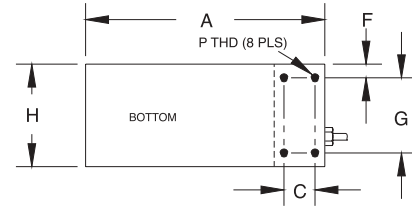
Hysteresis: 0.02% Full scale
 Insulation Resistance: 5000 megohms
 Deflection at Capacity: 2 lb = .023"/.58mm, 5-25 lb = .020"/.51mm
 Seal Type: Environmentally-sealed, IP61
 Cable Length: 10'/3.1m
 Cable Color Code: Red + Excitation
 Black - Excitation
 Green + Signal
 White - Signal
 Warranty: 2 years

65024 ORDER INFORMATION

Load Rating	Part #	Suggested List Price
2 lb (0.9 kg)	17438	
5 lb (2.3 kg)	17439	
10 lb (4.5 kg)	17440	
25 lb (11.3 kg)	17441	



60060 Single Point, Aluminum, Clear Anodized, IP67



RATED CAPACITY	DIMENSIONS									
	A	B	C	D	F	G	H	K	L	P
lb/inches										
100-2000	7.50	.31	.98	4.92	.30	2.36	2.95	2.95	.06	5/16-18-2B X .75 DP
kg/millimeters										
45.4-907.2	190.5	7.9	25.0	125.0	7.6	60.0	75.0	75.0	1.5	5/16-18-2B X 19 DP

SPECIFICATIONS:

Full Scale Output:	2.0 mV/V	Insulation Resistance:	5000 megohms
Bridge Resistance:	350 ohms, nominal	Deflection at Capacity:	250 lb = .010"/.25mm, 500-2000 lb = .006"/.15mm
Material/Finish:	Aluminum, clear anodized	Seal Type:	Environmentally-sealed, IP67
Temperature:	Compensated range 0°F to 150°F/-18°C to 65°C	Cable Length:	10'/3.1m
Manufacturer		Cable Color Code:	Red + Excitation Black - Excitation Green + Signal White - Signal
Model Number:	60060	Warranty:	2 years
Safe Overload:	150% Full scale		
Rated Excitation:	10V DC (20V maximum)		
Max. Platform Size:	30" x 30"/762mm x 762mm		
Combined Error:	0.02% Full scale		

60060 ORDER INFORMATION

Load Rating	Part #	Suggested List Price
100 lb (45.4 kg)	36479	
250 lb (113.4 kg)	17582	
500 lb (226.8 kg)	17583	
750 lb (340.2 kg)	17584	
1000 lb (453.6 kg)	17585	
2000 lb (907.2 kg)	17586	

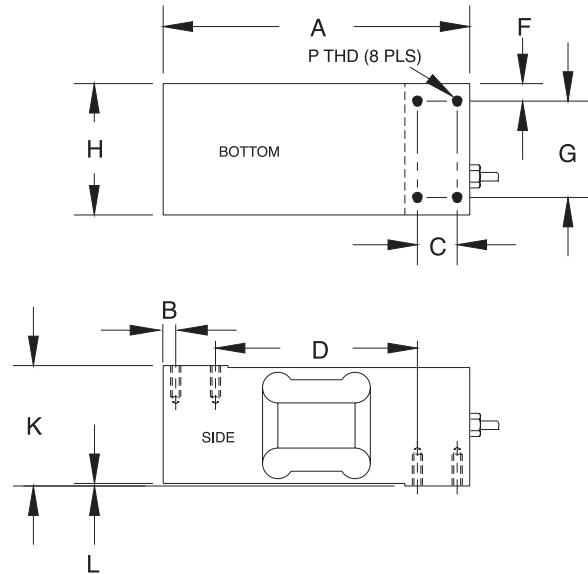
INTERCHANGEABLE PRODUCTS

Manufacturer	Model
Sensortronics	(see page 315) 60060-0101*

* Stainless steel



60060-0101 Single Point, Stainless Steel, IP67



RATED CAPACITY	DIMENSIONS										
	A	B	C	D	F	G	H	K	L	P	
lb/inches 250-2000	7.50	.31	.98	4.92	.30	2.36	2.95	2.95	.06	5/16-18-2B X .75 DP	
kg/millimeters 113.4-907.2	190.5	7.9	25.0	125.0	7.6	60.0	75.0	75.0	1.5	5/16-18-2B X 19 DP	

SPECIFICATIONS:

Full Scale Output:	2.0 mV/V	Insulation Resistance:	5000 megohms
Bridge Resistance:	350 ohms, nominal	Deflection at Capacity:	250 lb = .010"/.25mm, 500-2000 lb = .006"/.15mm
Material/Finish:	Stainless steel	Seal Type:	Environmentally-sealed, IP67
Temperature:	Compensated range 0°F to 150°F/-18°C to 65°C	Cable Length:	10'/3.1m
Manufacturer		Cable Color Code:	Red + Excitation Black - Excitation Green + Signal White - Signal
Model Number:	60060-XX-0101	Warranty:	2 years
Safe Overload:	150% Full scale		
Rated Excitation:	10V DC (20V maximum)		
Max. Platform Size:	30" x 30"/762mm x 762mm		
Combined Error:	0.02% Full scale		

60060-0101 ORDER INFORMATION

Load Rating	Part #	Suggested List Price
250 lb (113.4 kg)	36481	
500 lb (226.8 kg)	36482	
750 lb (340.2 kg)	36483	
1000 lb (453.6 kg)	36484	
2000 lb (907.2 kg)	36485	

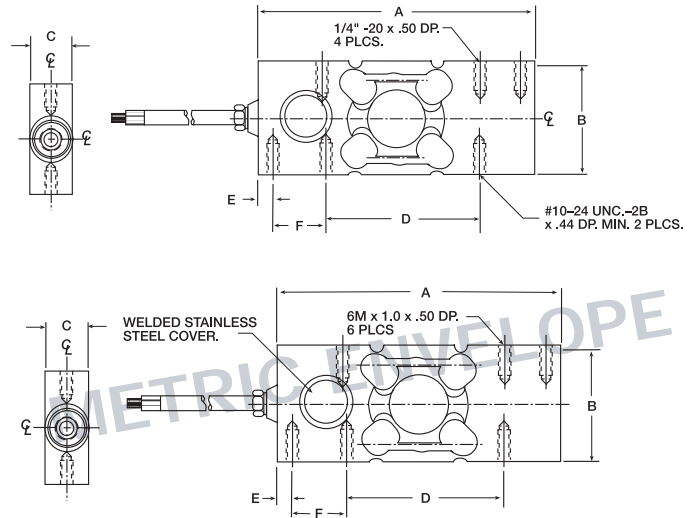
INTERCHANGEABLE PRODUCTS

Manufacturer	Model
Sensortronics	(see page 314) 60060*

* Aluminum



60064 Single Point, Stainless Steel Welded-seal, IP67



RATED CAPACITY	DIMENSIONS					
	A	B	C	D	E	F
lb/inches						
13.2-50	5.00	1.99	.72	3.00	.25	.75
100-132.3	5.00	1.99	.94	3.00	.25	.75
kg/millimeters						
6.0-22.7	127.0	50.4	18.3	76.2	6.4	19.1
45.4-60.0	127.0	50.4	23.9	76.2	6.4	19.1

SPECIFICATIONS:

Full Scale Output:	3.0 mV/V (lb) 2.0 mV/V (kg)	Combined Error:	0.03% Full scale
Bridge Resistance:	350 ohms, nominal	Non-repeatability:	0.01% Full scale
Material/Finish:	Stainless steel	Insulation Resistance:	5000 megohms
Temperature:	Compensated range 0°F to 150°F/-18°C to 65°C	Seal Type:	Welded-seal, IP67
Manufacturer		Cable Length:	10'/3m
Model Number:	60064	Cable Color Code:	Green + Excitation Black - Excitation White + Signal Red - Signal
Safe Overload:	150% Full scale	Warranty:	2 years
Rated Excitation:	10V AC/DC (15V maximum)		

60064 ORDER INFORMATION

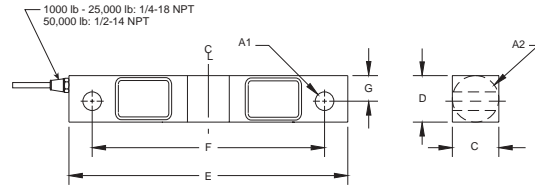
Load Rating	Part #	Suggested List Price
25 lb (11.3 kg)	41125	
50 lb (22.7 kg)	41126	
100 lb (45.4 kg)	41127	
Metric		
6 kg (13.2 lb)	41128	
15 kg (33.1 lb)	41129	
60 kg (132.3 lb)	41130	

INTERCHANGEABLE PRODUCTS

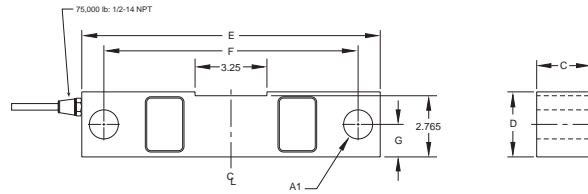
Manufacturer	Model
Avoirdupois	
Revere Transducers	(see page 284) HPS
Metric	
Rice Lake Weighing Systems	(see page 153) RLHPS
Revere Transducers	(see page 285) HPSM



65016 Double-Ended Beam, Alloy Steel, IP67



1000-50,000 lb/453.6-22,679.6 kg



75,000 lb/34,019.4 kg

RATED CAPACITY	DIMENSIONS							CONDUIT ADAPTER
	A1	A2	C	D	E	F	G	
lb/inches								
1000-5000	.50	1.25	1.25	1.25	7.50	6.25	.69	1/4-18 NPT
10,000-25,000	.81	1.99	1.44	1.94	8.75	7.50	.96	1/4-18 NPT
35,000	.81	2.50	1.50	2.50	8.75	7.50	—	
50,000	1.31	3.00	2.44	2.94	13.50	11.50	1.50	1/2-14 NPT
75,000	1.31	—	2.44	2.94	13.50	11.50	1.47	1/2-14 NPT
kg/millimeters								
453.6-2268.0	12.7	31.8	31.8	31.8	190.5	158.8	17.5	1/4-18 NPT
4535.9-15,876.0	20.6	50.8	36.6	49.3	222.3	190.5	24.4	1/4-18 NPT
22,679.6	33.3	76.2	62.0	74.7	342.9	292.1	38.1	1/2-14 NPT
34,019.4	33.3	—	62.0	74.7	342.9	292.1	37.3	1/2-14 NPT

SPECIFICATIONS:

Full Scale Output: 3.0 mV/V nominal
Bridge Resistance: 700 ohms, nominal
Material/Finish: High-alloy steel, nickel plated
Temperature: Compensated range
 0°F to 150°F/-18°C to 65°C
Manufacturer Model Number: 65016-XX
Safe Overload: 150% Full scale
Rated Excitation: 10V AC/DC (25V maximum)

Nonlinearity: 0.03% Full scale
Hysteresis: 0.02% Full scale
Insulation Resistance: 5000 megohms
Seal Type: Environmentally-sealed, IP67
Cable Length: 25'/7.6m
Cable Color Code: Red + Excitation
 Black - Excitation
 Green ... + Signal
 White - Signal
Warranty: 2 years

65016 ORDER INFORMATION

Load Rating	Part #	Suggested List Price
1000 lb (453.6 kg)	17268	
1500 lb (680.4 kg)	17270	
2500 lb (1134.0 kg)	17273	
5000 lb (2268.0 kg)	17275	
10,000 lb (4535.9 kg)	17277	
15,000 lb (6803.9 kg)	17279	
20,000 lb (9071.9 kg)	17281	
25,000 lb (11,339.8 kg)	17282	
35,000 lb (15,876.0 kg)	46498	
50,000 lb (22,679.6 kg)	17284	
*75,000 lb (34,019.4 kg)	25358	

INTERCHANGEABLE PRODUCTS

Manufacturer	Model
Rice Lake Weighing Systems (see page 139) RL75016
Celtron (see page 195) DSR
Revere Transducers 5203

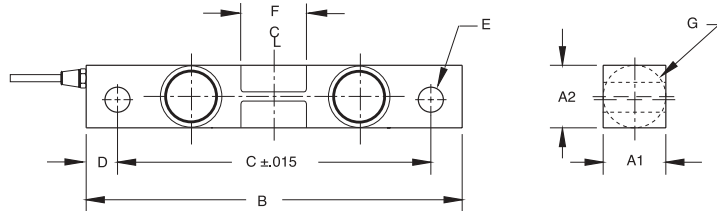
WEIGH MODULE AVAILABLE

Model	Page #
RL1600 Series	63 and 65

* 75,000 lb capacity has a square center.



65016W Double-Ended Beam, Stainless Steel Welded-seal, IP67



RATED CAPACITY	DIMENSIONS								CONDUIT ADAPTER
	A1	A2	B	C	D	E	F	G	
lb/inches									
1000-5000	1.22	1.22	7.50	6.25	.62	.50	1.12	1.25	1/4-18NPT
10,000-25,000	1.44	1.94	8.75	7.50	.62	.81	1.62	1.99	1/4-18NPT
50,000-75,000	2.44	2.94	13.50	11.50	1.00	1.31	3.25	2.99	1/2-14NPT
kg/millimeters									
453.6-2268.0	31.0	31.0	190.5	158.8	15.7	12.7	28.4	31.8	1/4-18NPT
4535.9-11,339.8	36.6	49.3	222.3	190.5	15.7	20.6	41.1	50.5	1/4-18NPT
15,876.0	36.6	62.0	222.3	190.5	15.7	20.6	41.1	63.5	1/4-18NPT
22,679.6-34,019.4	62.0	74.7	342.9	292.1	25.4	33.3	82.6	75.9	1/2-14NPT

SPECIFICATIONS:

Full Scale Output: 3.0 mV/V nominal
Bridge Resistance: 700 ohms, nominal
Material/Finish: Stainless steel
Temperature: Compensated range
 0°F to 150°F/-18°C to 65°C
Manufacturer
Model Number: 65016W-XX-0104W
Safe Overload: 150% Full scale
Rated Excitation: 10V AC/DC (25V maximum)

Nonlinearity: 0.03% Full scale
Hysteresis: 0.02% Full scale
Insulation Resistance: 5000 megohms
Seal Type: Welded-seal, IP67
Cable Length: 25'±7.6m
Cable Color Code:
 Red + Excitation
 Black - Excitation
 Green + Signal
 White - Signal
Warranty: 2 years

65016W ORDER INFORMATION

Load Rating	Part #	Suggested List Price
1000 lb (453.6 kg)	36295	
1500 lb (680.4 kg)	36296	
2000 lb (907.2 kg)	36297	
2500 lb (1134.0 kg)	36298	
5000 lb (2268.0 kg)	36299	
10,000 lb (4535.9 kg)	36300	
15,000 lb (6803.9 kg)	36301	
20,000 lb (9071.9 kg)	36302	
25,000 lb (11,339.8 kg)	36303	
50,000 lb (22,679.6 kg)	36304	
*75,000 lb (34,019.4 kg)	36305	

INTERCHANGEABLE PRODUCTS

Manufacturer	Model
Rice Lake Weighing Systems	(see page 141) RL75016 WHE

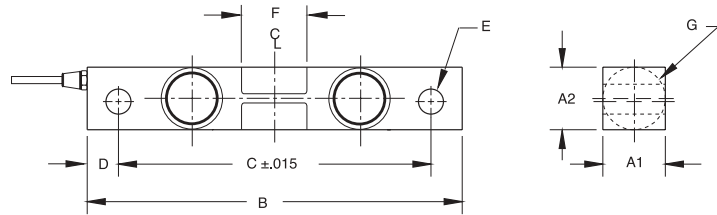
WEIGH MODULE AVAILABLE

Model	Page #
RL1600 Series	67

* 75,000 lb capacity has a square center.



65016WH Double-Ended Beam, Stainless Steel Hermetically-sealed, IP68



RATED CAPACITY	DIMENSIONS								CONDUIT ADAPTER
	A1	A2	B	C	D	E	F	G	
lb/inches									
1000-5000	1.22	1.22	7.50	6.25	.62	.50	1.12	1.25	1/2-14 NPT
10,000-25,000	1.44	1.94	8.75	7.50	.62	.81	1.62	1.99	1/2-14 NPT
50,000-75,000	2.44	2.94	13.50	11.50	1.00	1.31	3.25	2.99	1/2-14 NPT
kg/millimeters									
453.6-2268.0	31.0	31.0	190.5	158.8	15.7	12.7	28.4	31.8	
4535.9-11,339.8	36.6	49.3	222.3	190.5	15.7	20.6	41.1	50.5	
15,876.0	36.6	62.0	222.3	190.5	15.7	20.6	41.1	63.5	
22,679.6-34,019.4	62.0	74.7	342.9	292.1	25.4	33.3	82.6	75.9	

SPECIFICATIONS:

Full Scale Output:	3.0 mV/V nominal	Nonlinearity:	0.03% Full scale
Bridge Resistance:	700 ohms, nominal	Hysteresis:	0.02% Full scale
Material/Finish:	Stainless steel	Insulation Resistance:	5000 megohms
Temperature:	Compensated range 0°F to 150°F/-18°C to 65°C	Seal Type:	Hermetically-sealed, IP68
Manufacturer		Cable Length:	25'/7.6m
Model Number:	65016W-XX-0104WH	Cable Color Code:	Red + Excitation Black - Excitation Green ... + Signal White - Signal
Safe Overload:	150% Full scale	Warranty:	2 years
Rated Excitation:	10V AC/DC (25V maximum)		

65016WH ORDER INFORMATION

Load Rating	Part #	Suggested List Price
1000 lb (453.6 kg)	65827	
1500 lb (680.4 kg)	65828	
2000 lb (907.2 kg)	65829	
2500 lb (1134.0 kg)	65830	
5000 lb (2268.0 kg)	65831	
10,000 lb (4535.9 kg)	65832	
15,000 lb (6803.9 kg)	65833	
20,000 lb (9071.9 kg)	65834	
25,000 lb (11,339.8 kg)	65835	
50,000 lb (22,679.6 kg)	65836	
*75,000 lb (34,019.4 kg)	65837	

* 75,000 lb capacity has a square center.

INTERCHANGEABLE PRODUCTS

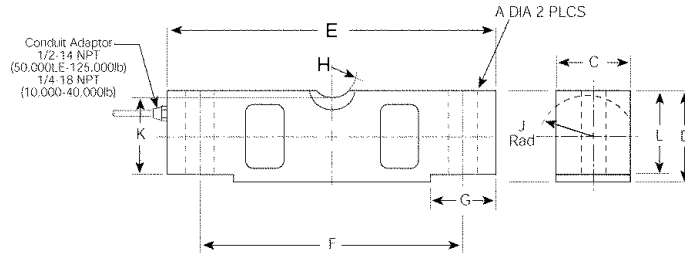
Manufacturer	Model
Rice Lake Weighing Systems.....	(see page 141) RL75016 WHE
Sensortronics	(see page 318) 65016W

WEIGH MODULE AVAILABLE

Model	Page #
RL1600 Series	67



65058 Double-Ended Beam, Alloy Steel NTEP 1:6000/1:10,000 Class IIIL Multiple Cell, IP67



RATED CAPACITY	DIMENSIONS										
	A	C	D	E	F	G	H	J	K	L	
lb/inches											
10,000-25,000	.68	1.69	1.94	7.75	6.50	1.38	.75	.90	1.63	1.70	
40,000-50,000 SE*	.81	1.94	2.44	10.25	8.50	1.93	1.00	1.12	2.00	2.10	
50,000 LE-75,000	1.06	2.44	2.94	10.25	8.50	1.93	1.00	1.37	2.54	2.65	
100,000-125,000	1.62	2.90	3.86	15.25	12.75	3.13	1.50	1.80	3.30	3.43	
kg/millimeters											
4535.9-11,339.8	17.3	42.9	49.3	196.9	165.1	35.1	19.1	22.9	41.4	43.2	
18,143.7-22,679.6 SE	20.6	49.3	62.0	260.4	215.9	49.0	25.4	28.5	50.8	53.3	
22,679.6 LE-34,019.4	26.9	62.0	74.7	260.4	215.9	49.0	25.4	34.8	64.5	67.3	
45,359.4-56,699.1	41.2	73.7	98.0	387.4	323.9	79.5	38.1	45.7	83.8	87.1	

SPECIFICATIONS:

Full Scale Output: 3.0 mV/V
Bridge Resistance: 700 ohms, nominal
Material/Finish: High-alloy steel, nickel plated
Temperature: Compensated range
 14°F to 104°F/-10°C to 40°C
Manufacturer:
Model Number: 65058A-XX-6000 (1:6000)
 65058A-XX-1000 (1:10,000)
Safe Overload: 150% Full scale
Rated Excitation: 10V DC (25V maximum)
Nonlinearity: 0.03% Full scale

Hysteresis: 0.02% Full scale
Insulation Resistance: 5000 megohms
Seal Type: Environmentally-sealed, IP67
Cable Length: 35'/10.6m
Cable Coloring: Red + Excitation
 Black - Excitation
 Green ... + Signal
 White - Signal
Warranty: 2 years

65058 ORDER INFORMATION

Load Rating	Part #	Suggested List Price
NTEP 1:6000		
20,000 lb (9071.9 kg)	21560	
25,000 lb (11,339.8 kg)	21561	
40,000 lb (18,143.7 kg)	21586	
50,000 lb LE (22,679.6 kg)	21562	
60,000 lb (27,215.5 kg)	21563	
75,000 lb (34,019.4 kg)	21564	
100,000 lb (45,359.4 kg)	21587	
125,000 lb (56,699.1 kg)	21588	
NTEP 1:10,000		
20,000 lb (9071.9 kg)	21592	
25,000 lb (11,339.8 kg)	21593	
40,000 lb (18,143.7 kg)	21608	
*50,000 lb SE (22,679.6 kg)	26081	
50,000 lb LE (22,679.6 kg)	21594	
60,000 lb (27,215.5 kg)	21595	
75,000 lb (34,019.4 kg)	21596	
100,000 lb (45,359.4 kg)	21609	
125,000 lb (56,699.1 kg)	21610	
Non-NTEP		
10,000 lb (4535.9 kg)	17287	

65058A ORDER INFORMATION

Load Rating	Part #	Suggested List Price
60' Cable		
75000 lb (34,019.4 kg)	39459	\$860.00

INTERCHANGEABLE PRODUCTS

Manufacturer	Model
Rice Lake Weighing Systems	(see page 142) RL75058
Celtron	(see page 196) CLB
Tedea	(see page 336) 4158

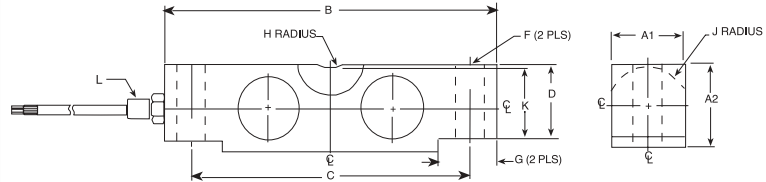
WEIGH MODULE AVAILABLE

Model	Page #
2100HE	21
TSA	75
MVS	73

SE refers to small envelope
 LE refers to large envelope
 * Howe-Richardson LOAD STAR 65058A-50K-1127



65058 S Double-Ended Beam, Stainless Steel Welded-seal, NTEP 1:10,000 Class III L Multiple Cell, IP67



RATED CAPACITY	DIMENSIONS											
	A	A2	B	C	D	F	G	H	J	K	L	
lb/inches												
20,000-25,000	1.69	1.94	7.75	6.50	1.70	.68	1.38	.75	.90	1.63	1/4-18NPT	
35,000-75,000	2.44	2.94	10.25	8.50	2.65	1.06	1.93	1.00	1.37	2.54	1/2-14NPT	
100,000	2.44	3.44	10.25	8.50	2.65	1.06	1.93	1.00	1.37	2.54	1/2-14NPT	
kg/millimeters												
9072-11340	43.0	49.3	196.9	165.1	43.2	17.3	35.1	19.1	22.9	41.4	1/4-18NPT	
15876-34020	62.0	74.7	260.4	216.0	67.3	27.0	49.0	25.4	34.8	64.5	1/2-14NPT	
45360	62.0	87.4	260.4	216.0	67.3	27.0	49.0	25.4	34.8	64.5	1/2-14NPT	

SPECIFICATIONS:

Full Scale Output: 3.0 mV/V
Bridge Resistance: 700 ohms, nominal
Material/Finish: Stainless steel
Temperature: Compensated range
 14°F to 104°F/-10°C to 40°C
Manufacturer:
Model Number: 65058S-XX-1000W
Safe Overload: 150% Full scale
Rated Excitation: 10V DC (25V maximum)
Nonlinearity: 0.03% Full scale

Hysteresis: 0.02% Full scale
Insulation Resistance: 5000 megohms
Seal Type: Welded-seal, IP67
Cable Length: 35'/10.6m
Cable Coloring: Red + Excitation
 Black - Excitation
 Green ... + Output
 White - Output
Warranty: 2 years

65058 S ORDER INFORMATION

Load Rating	Part #	Suggested List Price
35 ft Cable		
20,000 lb (9,072 kg)	45475	
25,000 lb (11,339.8 kg)	45476	
40,000 lb (18,143.7 kg)	45477	
50,000 lb (22,679.6 kg)	45478	
60,000 lb (27,215.3 kg)	45479	
75,000 lb (34,019.4 kg)	45480	
100,000 lb (45,359.2 kg)	45481	
125,000 lb (56,699.1 kg)	45482	
200,000 lb (90,720 kg)	45483	

60 ft Cable

75,000 lb (34,019.4 kg) 48698

INTERCHANGEABLE PRODUCTS

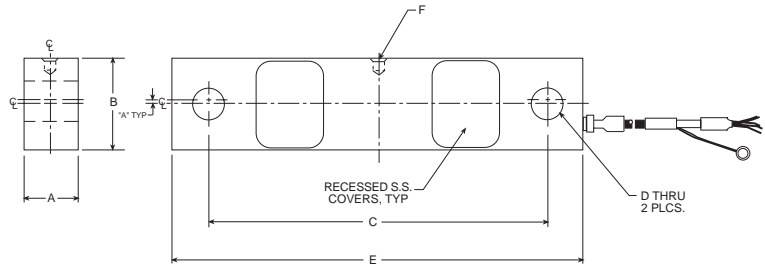
Manufacturer	Model
Rice Lake Weighing Systems	(see page 143) RL75060S

WEIGH MODULE AVAILABLE

Model	Page #
2100HE	21
TSA	75
MVS	73



65061A Double-Ended Beam, Alloy/Stainless Steel NTEP 1:10,000 Class III L Multiple Cell, IP67



RATED CAPACITY

	DIMENSIONS					
	A	B	C	D	E	F
lb/inches						
40,000	1.94	2.44	8.75	.78	10.50	.257 x .375 DP
50,000	1.94	2.44	8.75	.78	10.50	.257 X .375 DP
kg/millimeters						
18,143.7	49.3	62.0	222.3	19.8	266.7	6.5 X 9.5 DP
22,679.6	49.3	62.0	222.3	19.8	266.7	6.5 X 9.5 DP

SPECIFICATIONS:

Full Scale Output:	3.0 mV/V	Hysteresis:	0.02% Full scale
Bridge Resistance:	700 ohms, nominal	Insulation Resistance:	5000 ohms
Material/Finish:	High-alloy steel, nickel plated/stainless (50,000 lb)	Seal Type:	Environmentally-sealed (40,000 lb) Welded-seal, IP67 (50,000 lb)
Temperature:	Compensated range 14°F to 104°F/-10°C to 40°C	Cable Length:	60'/18.2m stainless steel overbraid
Manufacturer		Cable Coloring:	Red + Excitation Black - Excitation Green ... + Signal White - Signal
Model Number:	65061A-XX-1108 (Rodent cable)/ 650615-50k-1107 stainless	Warranty:	2 years
Safe Overload:	150% Full scale		
Rated Excitation:	10V DC (25V maximum)		
Nonlinearity:	0.03% Full scale		

65061A ORDER INFORMATION

Load Rating	Part #	Suggested List Price
40,000 lb (18,143.7 kg)	47850	
50,000 lb (22,679.6 kg)	67387	
Mounting Assembly Accessories*		
Load Button	25524	
Load Pin	50807	
Bearing Screw	44837	
Bushing	50748	
Load Cell Stand	50767	
Support Pin	50747	
Washer	10816	
Cotter Pin	15244	

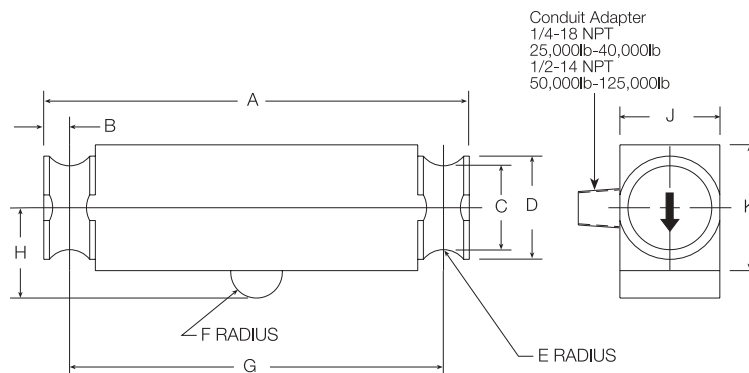
INTERCHANGEABLE PRODUCTS

Manufacturer	Model
Fairbanks®	Rodan 91088-50K
Fairbanks®	Rodan 90814-40K

* See Rice Lake Weighing Systems Mechanical Scale Parts catalog for parts diagram



65040A Double-Ended Beam, Alloy Steel NTEP 1:6000/1:10,000 Class IIIL Multiple Cell, IP67



RATED CAPACITY

	A	B	C	D	E	F	G	H	J	K
lb/inches										
25,000-50,000 SE	8.25	.50	1.63	2.00	.50	.50	7.25	1.75	1.94	2.44
50,000-75,000	11.50	.75	1.70	2.20	.75	1.00	10.00	2.00	1.94	2.94
100,000-125,000	14.50	1.00	2.44	3.20	1.00	1.50	12.50	2.75	2.90	3.86

kg/millimeters

11,339.8-22,679.6 SE	209.6	12.7	41.4	50.8	12.7	12.7	184.2	44.5	49.3	62.0
22,679.6-34,019.4	292.1	19.1	43.2	55.9	19.1	25.4	254.0	50.8	49.3	74.7
45,359.2-56,699.1	368.3	25.4	62.0	81.3	25.4	38.1	317.5	69.9	73.7	98.0

SPECIFICATIONS:

Full Scale Output:	3.0 mV/V	Nonlinearity:	0.03% Full scale
Bridge Resistance:	700 ohms, nominal	Hysteresis:	0.02% Full scale
Material/Finish:	High-alloy steel, nickel plated	Insulation Resistance:	5000 megohms
Temperature:	Compensated range 14°F to 104°F/-10°C to 40°C	Seal Type:	Environmentally-sealed, IP67
Manufacturer		Cable Length:	35'/10.6m
Model Number:	65040A-XX-6000 (1:6000) 65040A-XX-1000 (1:10,000)	Cable Coloring:	Red + Excitation Black - Excitation Green ... + Signal White - Signal
Safe Overload:	150% Full scale	Warranty:	2 years
Rated Excitation:	10V DC (25V maximum)		

65040A ORDER INFORMATION

Load Rating	Part #	Suggested List Price
NTEP 1:6000		
25,000 lb (11,339.8 kg)	21576	
40,000 lb (18,143.7 kg)	21577	
50,000 lb (22,679.6 kg)	21578	
60,000 lb (27,215.3 kg)	21579	
75,000 lb (34,019.4 kg)	21580	
100,000 lb (45,359.2 kg)	21581	
125,000 lb (56,699.1 kg)	21582	
NTEP 1:10,000		
25,000 lb (11,339.8 kg)	21598	
40,000 lb (18,143.7 kg)	21599	
*50,000 lb SE (22,679.6 kg)	66080	
**50,000 lb SE (22,679.6 kg)	69562	
50,000 lb (22,679.6 kg)	21600	
60,000 lb (27,215.3 kg)	21601	
75,000 lb (34,019.4 kg)	21602	
100,000 lb (45,359.2 kg)	21603	
125,000 lb (56,699.1 kg)	21604	

* Active, 1/2 ear version ** Durline, full ear version
Thurman is a registered trademark of Thurman Scale Co.

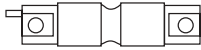
INTERCHANGEABLE PRODUCTS

Manufacturer	Model
Rice Lake Weighing Systems	(see page 145) RL75040
Thurman®	TSC 840
Celtron	(see page 198) DLB

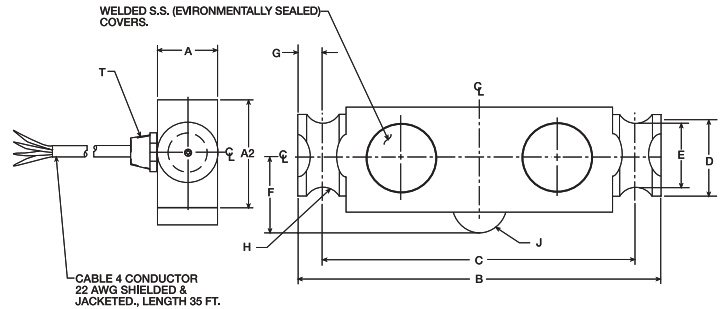
WEIGH MODULE AVAILABLE

Model	Page #
Translink™	83

SE refers to small envelope



65040 S Double-Ended Beam, Stainless Steel Welded-seal, IP67, NTEP 1:10,000 Class III L Multiple Cell



RATED CAPACITY	DIMENSIONS										
	A	A2	B	C	D	E	F	G	H	J	T
lb/inches											
25,000-40,000	1.94	2.44	8.25	7.25	2.00	1.63	1.75	.50	.50	.50	1/4-18 NPT
50,000-75,000	1.94	2.94	11.50	10.00	2.20	1.70	2.00	.75	.75	1.00	1/4-18 NPT
kg/millimeters											
11,340-18,144	49.2	62.0	209.6	184.2	50.8	41.4	44.5	12.7	12.7	12.7	1/4-18 NPT
22,680-34,020	49.2	74.7	292.1	254.0	55.9	43.2	50.8	19.1	19.1	25.4	1/4-18 NPT

SPECIFICATIONS:

Full Scale Output: 3.0 mV/V
Bridge Resistance: 700 ohms, nominal
Material/Finish: Stainless steel
Temperature: Compensated range 14°F to 104°F/-10°C to 40°C
Manufacturer Model Number: 65040S-XX-1123W
Safe Overload: 150% Full scale
Rated Excitation: 10V DC (25V maximum)
Nonlinearity: 0.03% Full scale

Hysteresis: 0.02% Full scale
Insulation Resistance: 5000 megohms
Seal Type: Welded-seal, IP67
Cable Length: 35'/10.6m
Cable Coloring: Red + Excitation
 Black - Excitation
 Green ... + Signal
 White - Signal
Warranty: 2 years

65040 S ORDER INFORMATION

Load Rating	Part #	Suggested List Price
25,000 lb (11,339.8 kg)	45467	
40,000 lb (18,143.7 kg)	45468	
50,000 lb (22,679.6 kg)	45469	
60,000 lb (27,215.5 kg)	45470	
75,000 lb (34,019.4 kg)	45471	
100,000 lb (45,359.4 kg)	45472	
125,000 lb (56,699.1 kg)	45473	
200,000 lb (90,720 kg)	45474	

INTERCHANGEABLE PRODUCTS

Manufacturer	Model
Rice Lake Weighing Systems	(see page 145) RL75040
Sensortronics	(see page 323) 65040A