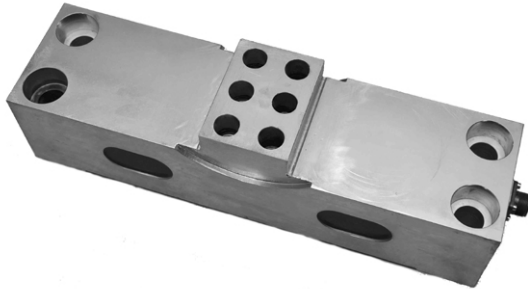


Double Ended Shear Beam



DESCRIPTION

The model DSA-R is a low profile double shear beam load cell, ideally suited for applications in harsh environments.

Due to the special design, the DSA-R load cell is insensitive against side loading and other interfering effects.

Because of the high operating temperature range of -40 up to +150°C, the DSA-R load cell is suitable for use in steel mills and foundries.

Very easy to maintain – cable will be connected via plug-and-socket connection.

Due to the high repeatability and high long-term stability, the load cell supplies very good results, even after perennial use.

IP65 gives an excellent protection against dust and moisture.

FEATURES

- Capacity 50t, 100t, 150t and 200t
- Other capacities on request
- Low profile
- High long-term stability and repeatability
- Operating temperature range -40 to +150°C
- Connection through a connector
- 15m special cable with connector for direct connecting to the load cell
- Zinc-plated steel
- 6-wire circuit (6 + 2 wires with option temperature monitoring)
- IP65

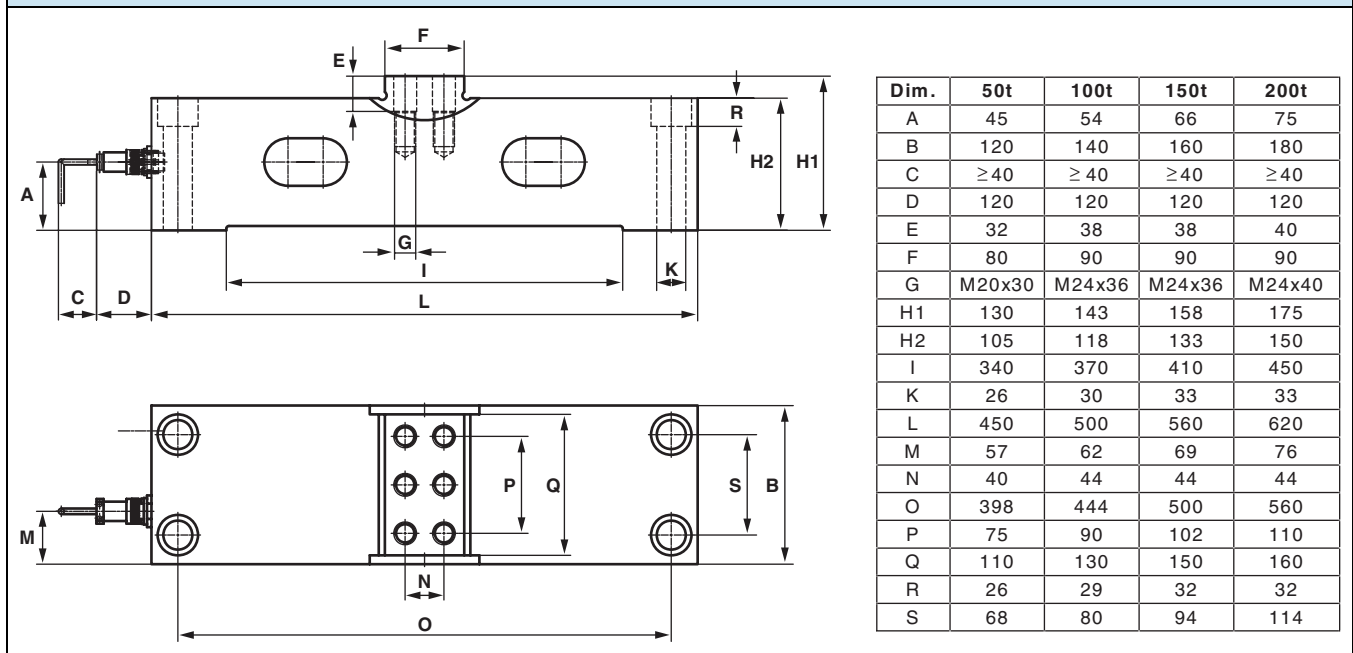
OPTIONS

- Temperature monitoring via integrated temperature sensor (2-wire circuit)
- Indicator which change the color if a too high temperature was reached

APPLICATIONS

- Silo and hopper weighing
- Tundish weighing
- Various applications in steel mills and foundries
- Industrial applications

OUTLINE DIMENSIONS in millimeters



SPECIFICATIONS					
PARAMETER	VALUE				UNIT
Rated capacity (R.C.)	50	100	150	200	t
Rated output (C)	1.0				mV/V
Total error	0.1				± % of C
Creeping (30 min)	0.05				± % of C
Temperature effect: on zero	0.005				± % of C/°C
Temperature effect: on output	0.003				± % of C/°C
Nominal temperature range	-10 to +100				°C
Operating temperature range	-40 to +150				°C
Storage temperature range	-50 to +180				°C
Safe overload	100				% of R.C.
Ultimate overload	>350				% of R.C.
Max. admissible side load	100				% of R.C.
Recommended excitation	10				V DC or AC
Max. supply voltage	36				V DC or AC
Input impedance	750±15				Ω
Output impedance	700±10				Ω
Insulation impedance	>2000				MΩ
Construction	steel, zinc-plated				
Weight	40	56	87	119	kg
Environmental protection	IP65				

Due to Vishay's policy of continuous development, these specifications are subject to change without notice.

Disclaimer

ALL PRODUCTS, PRODUCT SPECIFICATIONS AND DATA ARE SUBJECT TO CHANGE WITHOUT NOTICE.

Vishay Precision Group, Inc., its affiliates, agents, and employees, and all persons acting on its or their behalf (collectively, "Vishay Precision Group"), disclaim any and all liability for any errors, inaccuracies or incompleteness contained herein or in any other disclosure relating to any product.

The product specifications do not expand or otherwise modify Vishay Precision Group's terms and conditions of purchase, including but not limited to, the warranty expressed therein.

Vishay Precision Group makes no warranty, representation or guarantee other than as set forth in the terms and conditions of purchase. **To the maximum extent permitted by applicable law, Vishay Precision Group disclaims (i) any and all liability arising out of the application or use of any product, (ii) any and all liability, including without limitation special, consequential or incidental damages, and (iii) any and all implied warranties, including warranties of fitness for particular purpose, non-infringement and merchantability.**

Information provided in datasheets and/or specifications may vary from actual results in different applications and performance may vary over time. Statements regarding the suitability of products for certain types of applications are based on Vishay Precision Group's knowledge of typical requirements that are often placed on Vishay Precision Group products. It is the customer's responsibility to validate that a particular product with the properties described in the product specification is suitable for use in a particular application.

No license, express, implied, or otherwise, to any intellectual property rights is granted by this document, or by any conduct of Vishay Precision Group.

The products shown herein are not designed for use in life-saving or life-sustaining applications unless otherwise expressly indicated. Customers using or selling Vishay Precision Group products not expressly indicated for use in such applications do so entirely at their own risk and agree to fully indemnify Vishay Precision Group for any damages arising or resulting from such use or sale. Please contact authorized Vishay Precision Group personnel to obtain written terms and conditions regarding products designed for such applications.

Product names and markings noted herein may be trademarks of their respective owners.