

[A4] A4 LENS SERIES

■ Contents

1. Lens Layout
2. Lens Characteristics
3. Lens Specification
4. Measurements data
5. Assmby with the A4 Lens + Tape
6. Dimensions
7. Handling of the Lens



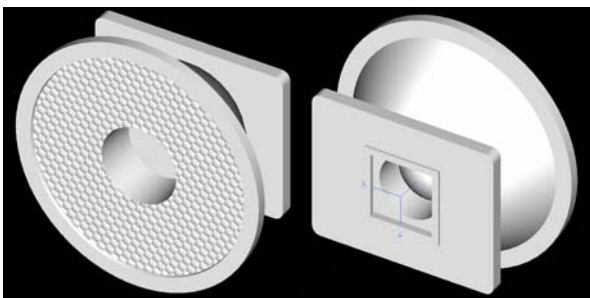
- The 'A4 Lens Series' offers low profile lens especially designed for the Seoul Semiconductor LEDs

: Seoul Semiconductor 'AX42XX LED Series'

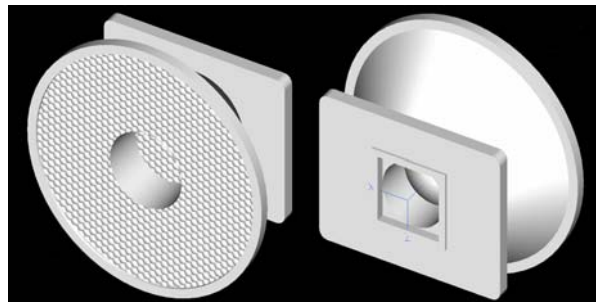
<http://www.acriche.co.kr/>

1. Lens Layout

■ 24D Lens



■ 38D Lens



2. Lens Characteristics

| Parameter | Symbol | Value | Unit |
|-----------------|------------------|-----------|------|
| Lens | PMMA (Optics) | - | - |
| Operating Temp. | T _{opr} | -40 ~ +80 | °C |
| Storage Temp. | T _{stg} | -40 ~ +80 | °C |

3. Lens Specification

| Lens Type | Beam Angle | Beam Pattern | Components |
|-----------|-------------|--------------|-------------|
| 24D Lens | 24 ± 3 deg. | Circle | Single Lens |
| 38D Lens | 38 ± 3 deg. | Circle | Single Lens |

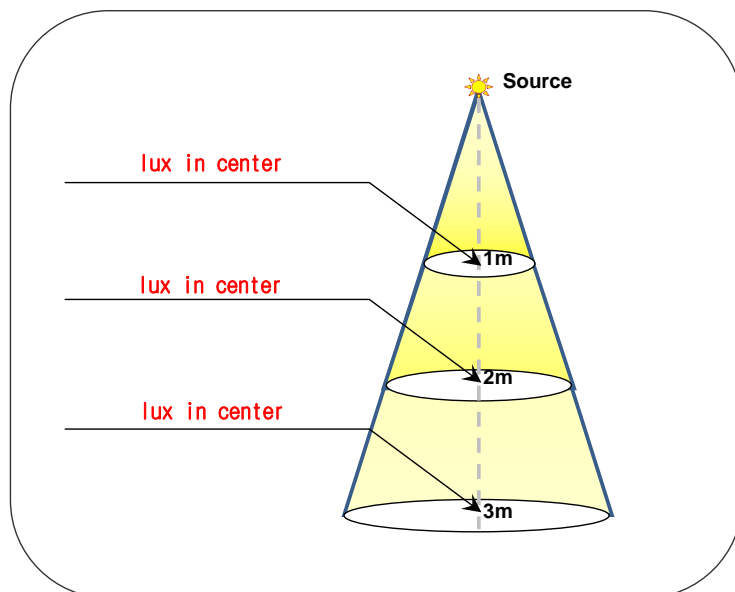
4. Measurements data (Illuminance, Distribution Graph, Luminous Flux)

| | |
|-------------------|---|
| Test Conditions : | LED : <u>Seoul Semiconductor 'A4 Series LED' (Typical Luminous Flux = 50 Lumen)</u> |
| | Room Luminous Intensity : 0 Lumen |
| | Room Temperature : 20°C ± 1°C |
| | LED temperature after 10 min : ~ 36°C |

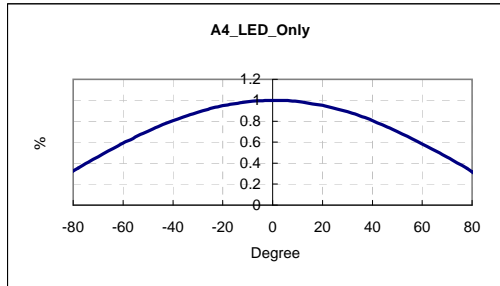
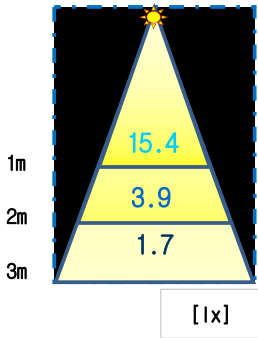
■ Illuminance



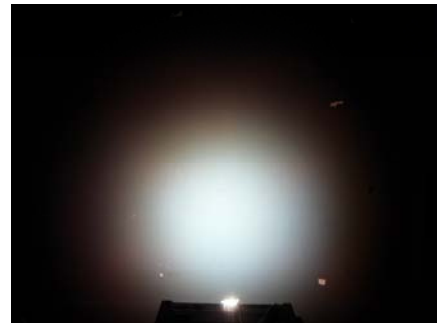
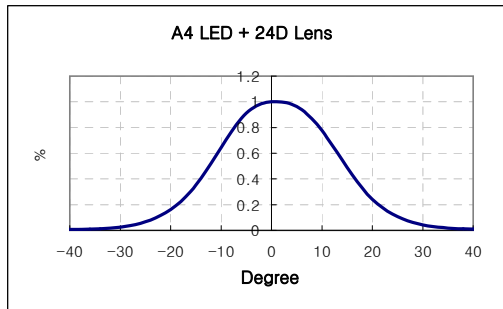
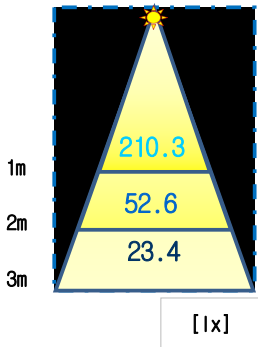
MINOLTA [CL-200]
: Mesurment (Illuminance)



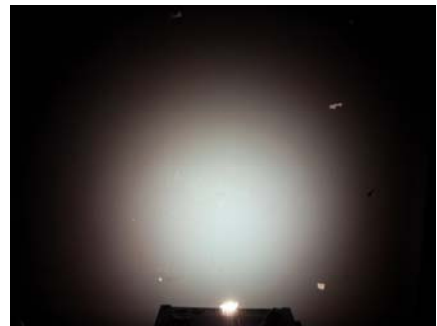
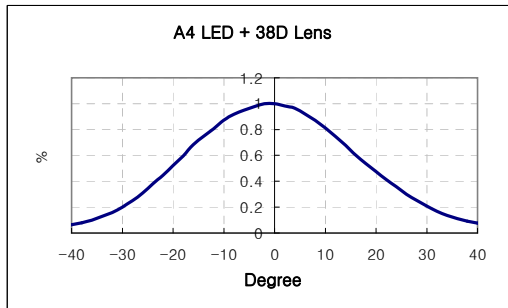
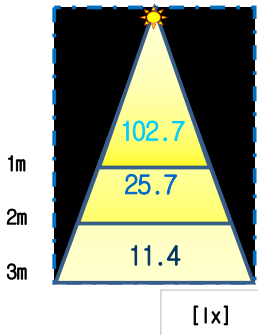
■ LED Only



■ LED + 24D Lens



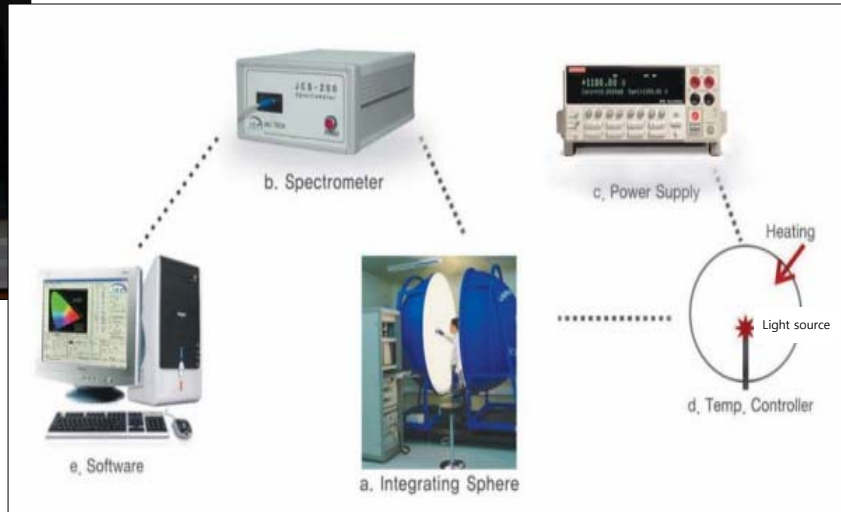
■ LED + 38D Lens



Luminous Flux



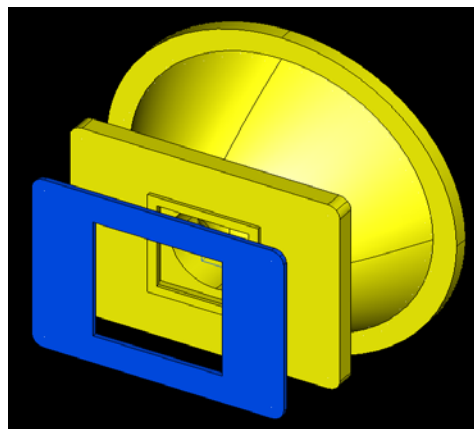
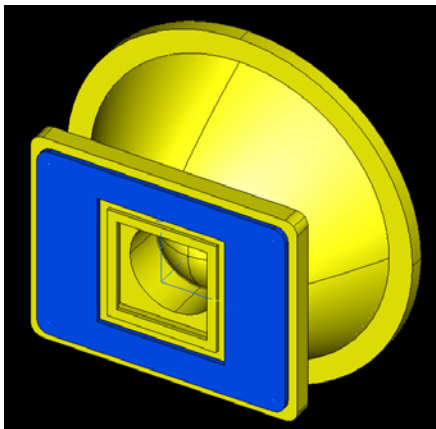
J&C TECH [LMS200]
: Luminous Flux



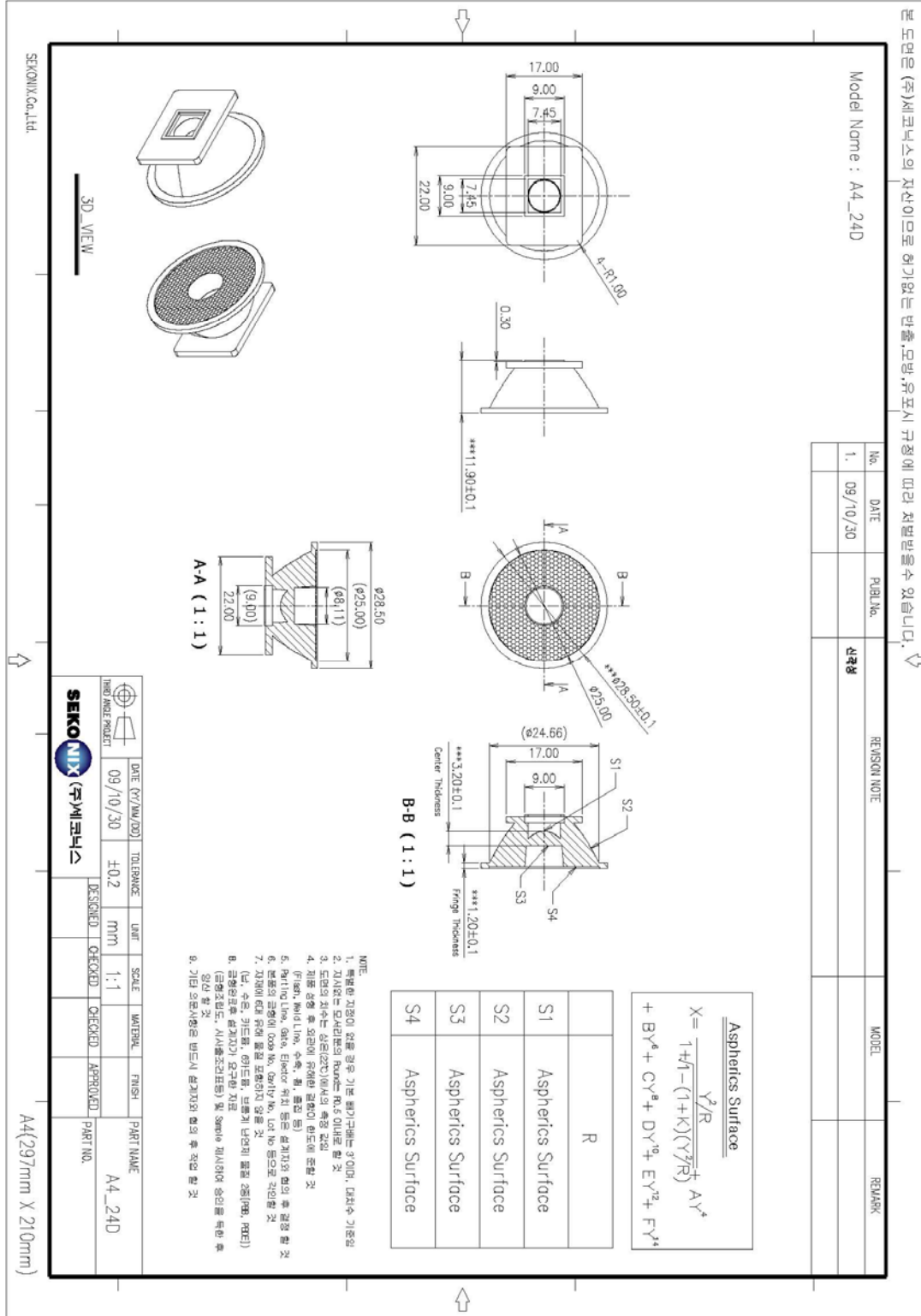
| | A4 LED | A4 LED + 24D LENS | A4 LED + 38D LENS |
|-----------------------|----------|-------------------|-------------------|
| Luminous Flux (lm) | 49.3 | 48.0 | 46.3 |
| Color Temperature (K) | 2931.1 | 2943.9 | 2941.6 |
| Efficiency (Lens/LED) | - | 90% | 90% |
| Beam Angle | 134 Deg. | 25 ± 3 deg. | 38 ± 3 deg. |

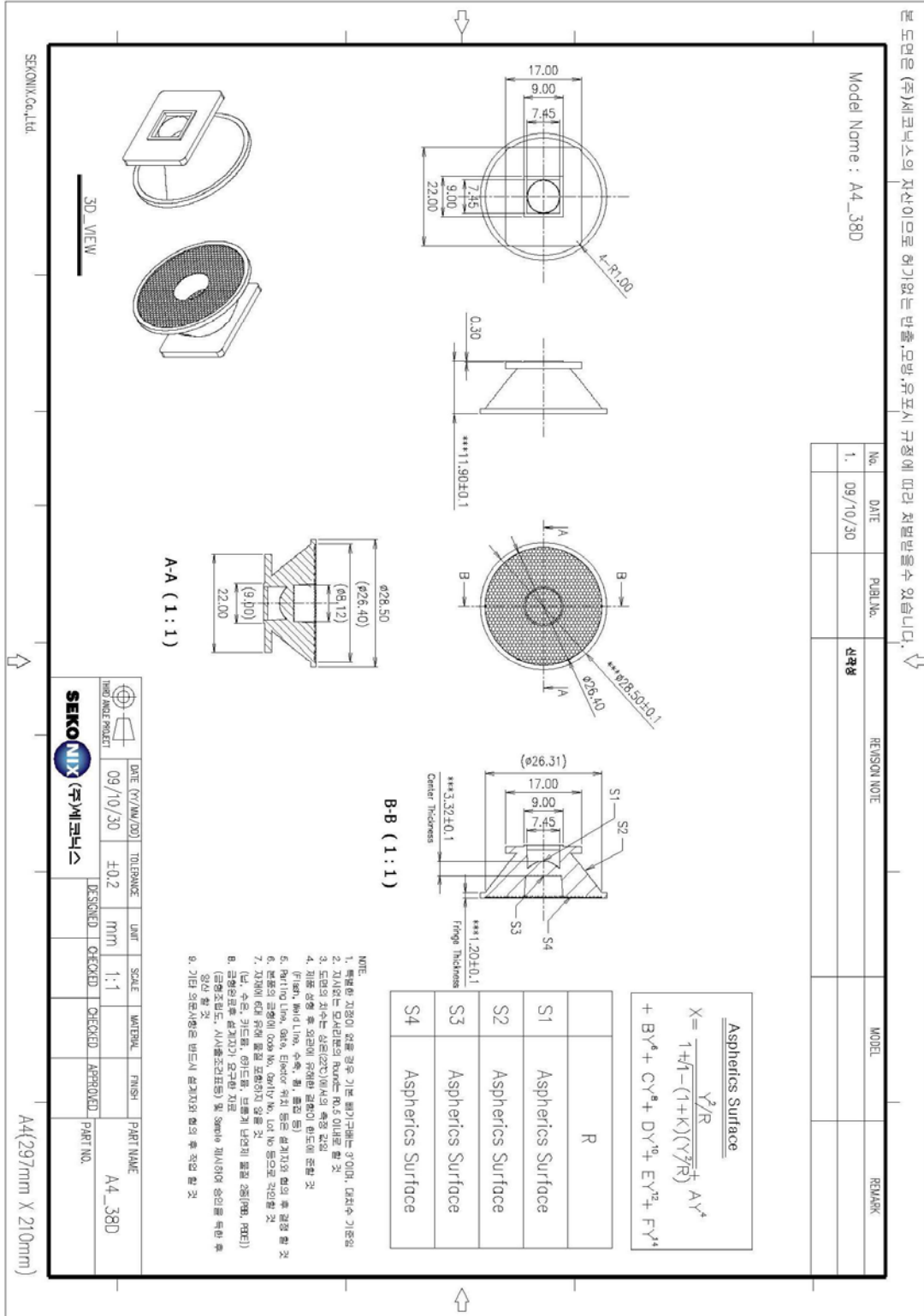
※. According to voltage and electric current price there being a possibility which there will be fluctuation.

5. Assmly with the A4 Lens + Tape



6. Dimensions





7. Handling of the Lens

- Do not store in dusty place.
- Do not expose under corrosive environment.
- Do not touch the lens surface with bare-hand.
- Do not dip in or apply to aggressive chemicals, and also.
- Do not wipe with cloth or paper soaked with aggressive chemicals.

■ 'A4 Lens Series' is ideal optical solution for Acriche4 LEDs illumination application.

