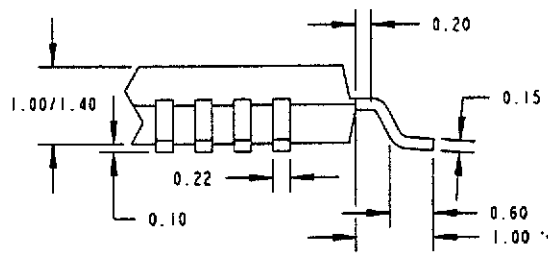
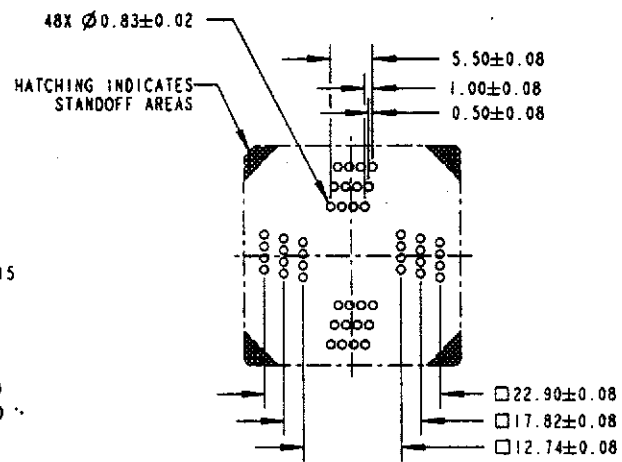
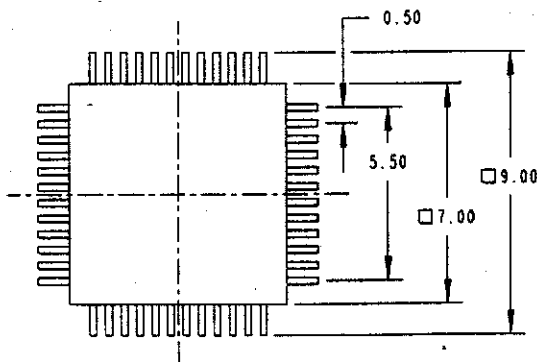
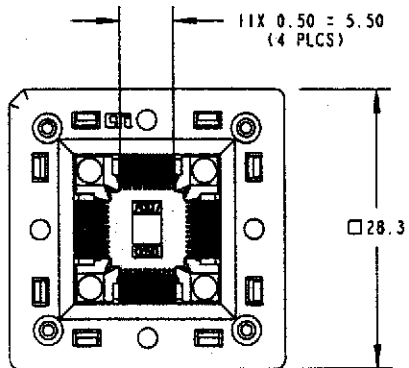
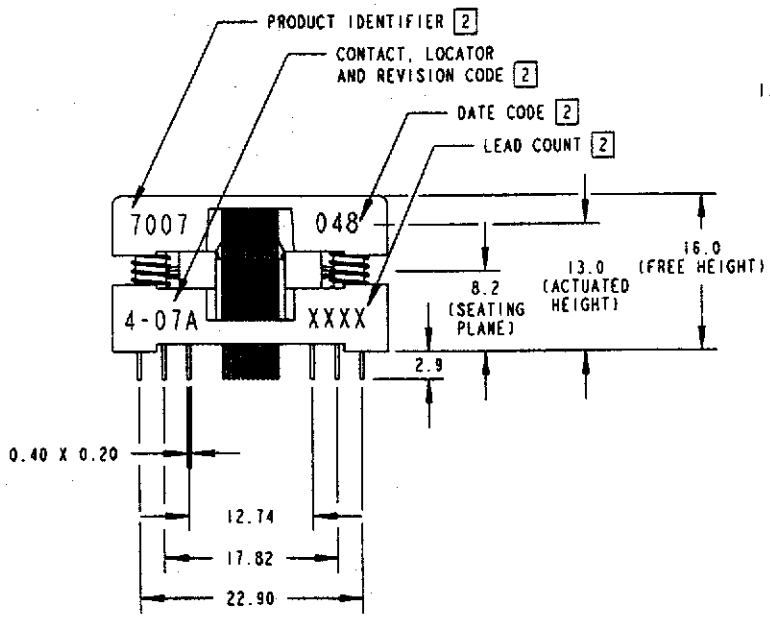


REV	ECO	DESCRIPTION	DATE	BY
A	3877	INITIAL RELEASE.	10/9/00	PH



ALL PACKAGE DIMENSIONS ARE FOR REFERENCE ONLY  
 PACKAGE SPECIFICATION IS JEDEC MS-026.

RECOMMENDED  
 PCB HOLE PATTERN LAYOUT  
 (TOP VIEW)



- NOTES:
- MATERIAL AND FINISH:  
 SOCKET LID - POLYETHERIMIDE.  
 SOCKET BASE - POLYETHERIMIDE.  
 CONTACTS - PFINODAL, Au OVER Ni PLATING.  
 SPRINGS - STAINLESS STEEL, PASSIVATED.  
 RIVETS - STAINLESS STEEL, PASSIVATED.
  - MARKING: 2.0 HIGH, COLOR: WHITE.
  - REFER TO SK-0283 FOR CONTACT SEATING HEIGHTS.
  - REFER TO SK-0319 FOR NAIL/RIVET PRESS HEIGHTS.

LEGEND		MATERIAL/FINISH	ENGINEER PH	DATE 10/10/00	 <small>Products Arizona USA</small>
◇	CRITICAL				
0	NUMBER OF ◇ USED	PROJECT/SERIES	DATE 10/10/00	DATE 10/10/00	PART NUMBER <b>7007-048-4-07</b>
SIZE B	PROJECTION 				SCALE 2.0:1    UNITS: mm [in] CAB NUMBER
DO NOT SCALE					REV <b>A</b> SHEET 1 OF 1

ENGINEERING FILE