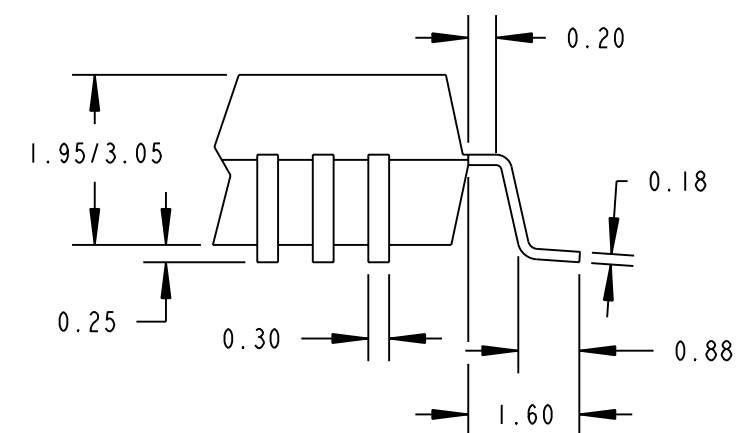
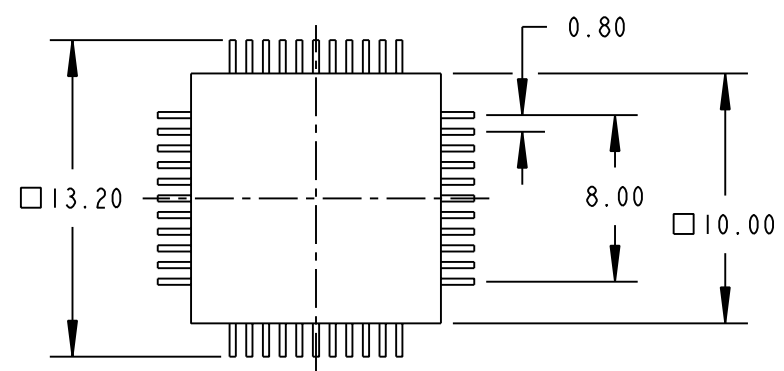
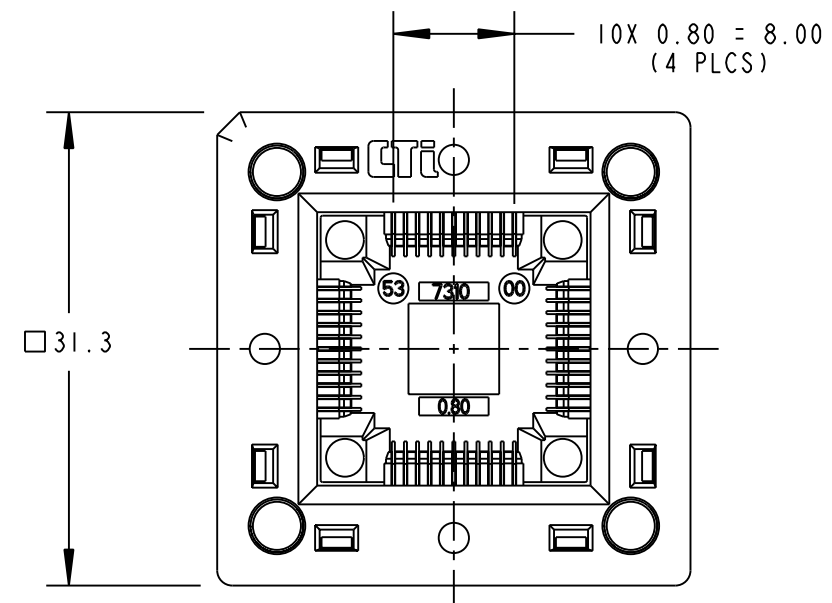
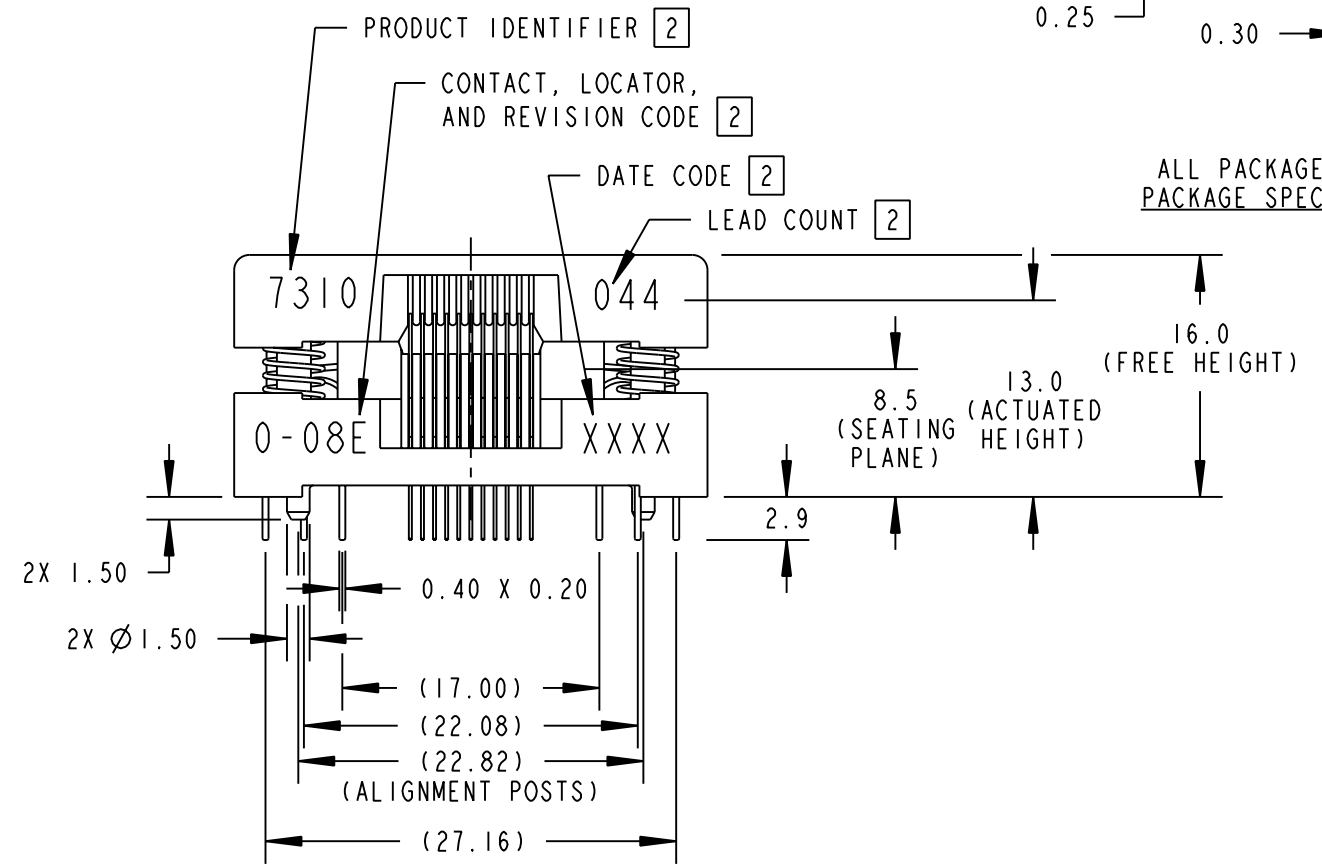
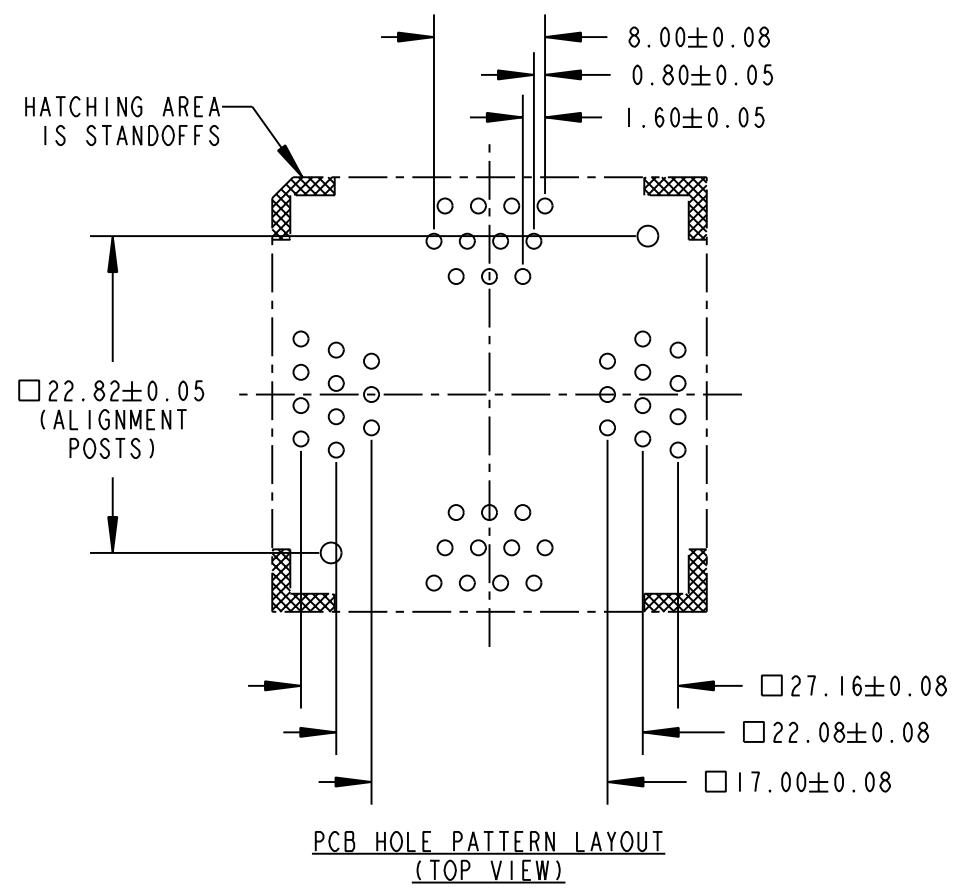


A	C	P	REV	DATE	BY	ECN #	REV	DATE	BY	ECN #	REV	DATE	BY	ECN #
X	-	-	C	8/26/94	PH	2181	D	2/19/96	RG	2393	E		SC	3204



ALL PACKAGE DIMENSIONS ARE FOR REFERENCE ONLY
PACKAGE SPECIFICATION IS JEDEC MO-108 (AA & AB)



- NOTES:
- MATERIAL AND FINISH
SOCKET LID - POLYETHERIMIDE
SOCKET BASE - POLYPHENYLENE SULFIDE
CONTACTS - BeCu, Au OVER Ni PLATING
SPRINGS - STAINLESS STEEL, PASSIVATED
 - MARKING: 2.0 HIGH, COLOR - WHITE
 - REFER TO SK-0283 FOR CONTACT SEATING HEIGHTS.
 - REFER TO SK-0319 FOR NAIL/RIVET PRESS HEIGHTS.

LEGEND		THIS DOCUMENT CONTAINS PROPRIETARY INFORMATION THAT IS THE SOLE PROPERTY OF WELLS-CTI. THIS INFORMATION IS TO BE HELD BY ITS RECIPIENT ON A CONFIDENTIAL BASIS, AND IS NOT TO BE DISCLOSED TO OTHERS OR USED WITHOUT WRITTEN CONSENT OF WELLS-CTI.	MATERIAL/FINISH	DRAWN	WELLS-CTI A subsidiary of PCD Inc. Phoenix Arizona USA	
©	CRITICAL		REFERENCE	CHECKED		
0	NUMBER OF © USED		PROJECT/SERIES	ENGINEER		
SIZE	PROJECTION		ENG. SUPRV.		PART NUMBER	
B			MFG. ENG.		7310-044-0-08	
			MOLDING		SCALE 2.0:1	REV E
			TOOLING		CAD NUMBER	UNITS: mm [in]
		DO NOT SCALE				SHEET 1