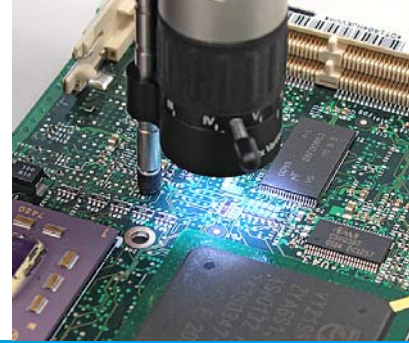


DATA

# ERSA mobile scope

## Mobile optical Inspection System for electronics production



ERSA mobile scope – Camera units with lenses and Desk-top holder

### ERSA mobile scope – solder joint inspection in the twinkling of an eye

The ERSA mobile scope is a compact and handy, portable video microscope to inspect solder joints in electronic production environments. The device has been designed for optical inspection and digital image recording including measurements of solder joints on Ball Grid Array (BGA),  $\mu$ BGA, CSP and Flip-Chip packages. The ERSA mobile scope is suitable to inspect PCB lands, solder paste prints or in general for optical inspection of components on printed circuit boards in Surface Mount Technology (SMT) or in Trough Hole Technology (THT). The device can be used in quality control, production, laboratories or R&D departments.

The compact ERSA mobile scope is connected to a PC or any portable computer via an USB interface and is ready for operation within minutes in any location. By means of the high-quality BGA optical head, components with hidden solder joints can easily be inspected, a Macro-Zoom lens allows topview surface inspection in various magnifications. Both optical heads are plugged onto the high-resolution digital color camera hand piece with a „Quick Snap“ connection. Changing the optical heads in accordance to the inspection task is a matter of seconds.

Long-life and very bright controllable LED lights are integrated in both optical heads and provide optimal illumination of the solder joints. For BGA inspection

an additional LED brush light is essential for back-light illumination or to light up very hidden and hard to reach areas. With the ERSA mobile scope soldering errors can be detected quickly and easily. The included and established ImageDoc inspection software not only displays the live images but also offers the operator various possibilities for documentation and analysis of the inspection results.

Extensive accessories allow the operator to compose his individual ERSA mobile scope inspection system according to his needs.

The practical aluminium case for the ERSA mobile scope offers safe storage of the inspection items and transportation of the system to any location wherever it is needed.



Inspection of a micro-BGA



### Europe (HQ)

#### ERSA GmbH

97877 Wertheim / Germany  
Tel.: +49 (0) 9342 / 800-0  
info@ersa.de

#### France

ERSA FRANCE, une division de  
KURTZ FRANCE S.A.R.L.  
Tel.: 00 33 3 80 56 66 10  
info@ersa-electronics.fr

#### America

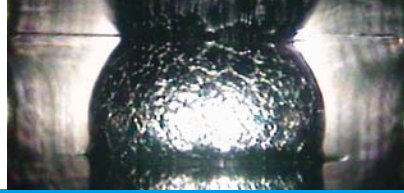
ERSA N. America, a division of  
KURTZ North America Inc.  
Plymouth, WI 53073, USA  
Tel.: 800-363-3772  
ersainfo@kna.net

#### China


ERSA Shanghai, a division of  
KURTZ Shanghai Ltd.  
Shanghai 200336, China  
Tel.: +86 (21) 3126 0818  
ersa@kurtz.com.cn


#### Korea

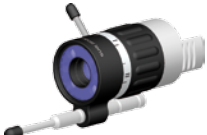
ERSA Korea a branch of kmc  
Seoul, 150-834 Korea  
Tel.: +82 2 6309 7031  
kmc@kmc.kr




## Technical data ERSA mobile scope

Basic camera unit	Description	
 0VSCA060	Image sensor	1/3.2" N-MOS solid state colour image sensor
	Number of effective pixels	1600 (H) x 1200 (V) pixels (UXGA / 2.0 MP)
	Interface	USB 2.0 serial bus
	Dimensions	114 (L) x 36 (W) x 51 (H) mm (without cable)

BGA Lens, 90° Optical Head	Description	
 0VSSE060-90K	On screen magnification	~ 180x – 15x on 14" monitor
	Working distance range	~ 0.5 – 30 mm (focusing range)
	Field of view	~ 2.0 – 24 mm
	Illumination	Integrated long-life cool white LED illumination
	Size of the optical head tip	8.2 x 2.2 mm (W x D)
	Foot print of optical head tip	8.2 x 0.8 mm (W x D)
	Dimensions	83 (L) x 20 (Ø) mm (max. 83 x 30 mm incl. focus position adjustment pin)

Macro-Zoom 80x with built-in LED light	Description	
 0VSSE060-MZ80	On screen magnification	~ 80x – 8x on 14" monitor
	Working distance range	~ 5 – 200 mm
	Field of view	~ 5 – 45 mm
	Illumination	Integrated long-life cool white LED illumination
	Dimensions	43 (L) x 19 (Ø) mm (85 x 35 mm max incl. telescopic stabilizer).

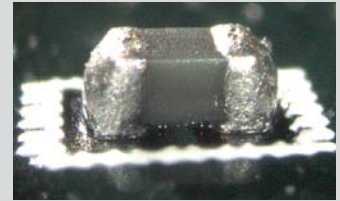
LED brush light	Description	
 0VLS030	Lamp type	Cool white power LED
	Illumination output	64 x 0.250 mm (Ø) plastic optical grade fibres
	Power source	3 x AA size batteries (Alkaline is recommended)
	Dimensions	Ø 26 x 250 mm (max. 40 x 250 mm)

## ERSA mobile scope sale sets

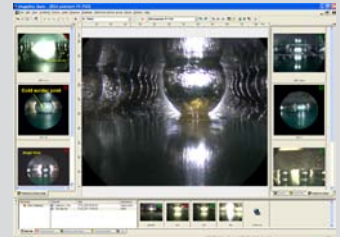
Order number →	0VSSC060VK1	0VSSC060VK2	0VSSC060VK3
<b>Content ↓</b>			
Basic camera unit, digital	1x	1x	1x
BGA lens, 90° optical head	1x	--	1x
Macro-Zoom 80x with LED light	--	1x	1x
LED brush light with dimmer	1x	--	1x
Desktop holder for camera unit	1x	--	1x
Operating manual	1x	1x	1x
ImageDoc Basic (inspection software)	1x	1x	1x
Aluminium case for ERSA mobile scope	--	--	1x

## Accessory ERSA mobile scope

Product name	Order number
Focusing stand, coarse/fine movement	0VSST060
X-Y table	0VSXY060
Stand for LED brush light	0VLS030H
USB image capture foot-switch "F3"	0VSSC060FS
ERSA lens cleaning kit	0VSLC100
Aluminium case for ERSA mobile scope	3VP00703



High magnification inspection of 0201s



ImageDoc (Inspection software)



Desktop holder for ERSA mobile scope



Focusing & LED brush light stand



X-Y table



USB image capture foot-switch