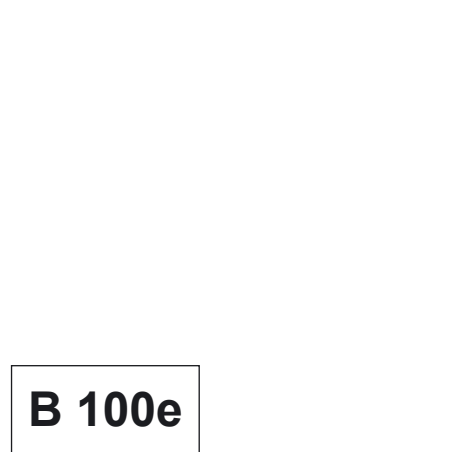
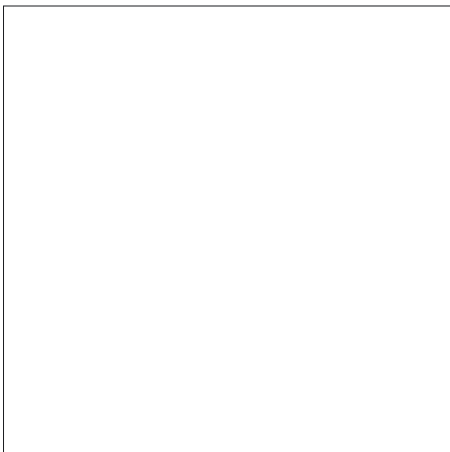
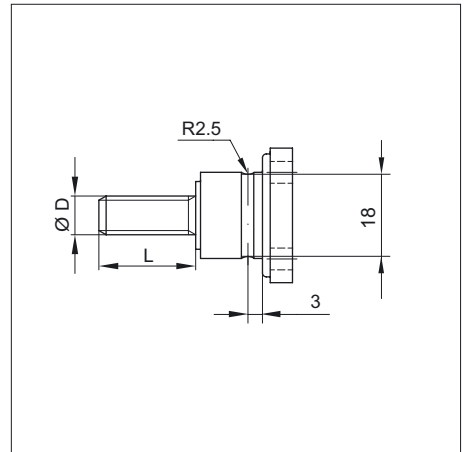
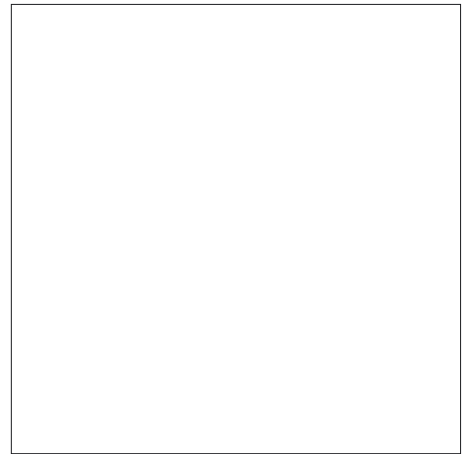


Terminal bolts EKS127 series



B 100e

Terminal bolts EKS127 series

Single terminal bolts from Schaltbau are easily incorporated in devices for the purpose of electrical termination.

They are designed for currents and voltages applicable to materials handling and rail vehicle equipment.

The EKS127 series terminal bolts can be used as individual terminals or mounted onto a rail to form a terminal block, where connections are made by cable lugs, terminal tags, or bus bar.

They are often used as insulated mounting support for switching elements or in other electrical components.

Features

- Four different sizes available
- Mounted with 2 M4 screws
- Option for rail mounting, fixed with split ring
- Rugged design
- Base is flame retardant to UL 94 V-0

Applications

- Mounting and distribution panels
- Terminal blocks
- Key-operated switches
- Emergency disconnect switches

Technical data



Technical data

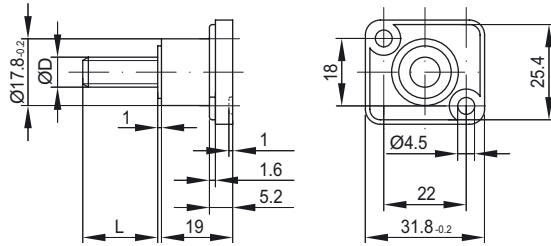
Materials	
● Base	Polyamide, fibre glass reinforced
● Terminal bolt	Steel, zinc-plated
Temperature range	-20°C ... +70°C
Max. temperature of bolt	120°C
Rated insulation voltage U_i	
● with single screws	900 V
● with rail mounting	800 V
Conv. thermal current I_{th}	
EKS127 a, EKS127 a /N	200 A
EKS127 b, EKS127 b /N	300 A
EKS127 c, EKS127 c /N	300 A
EKS127 d, EKS127 d /N	500 A
Mounting*	
● Single terminal	with 2 M4 screws
● in series on rail	with split ring
Bolt, max. tightening torque	
M 8	10 Nm
M 10	15 Nm
M 12	20 Nm

*see Mounting, page 3

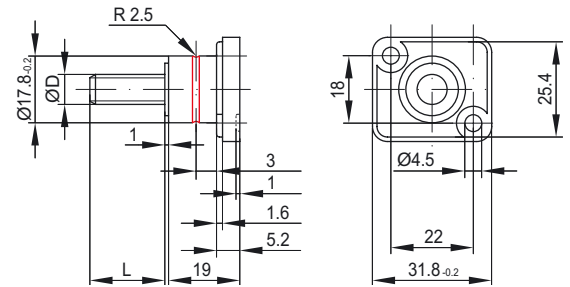
Ordering code, Dimension diagrams, Accessories

Single terminal bolts				Options for rail mounting			
Ordering code	ØD	L	Weight	Ordering code	ØD	L	Weight
EKS127 a	M 8	20	24 g	EKS127 a /N	M 8	20	24 g
EKS127 b	M 10	20	31 g	EKS127 b /N	M 10	20	31 g
EKS127 c	M 10	30	37 g	EKS127 c /N	M 10	30	37 g
EKS127 d	M 12	45	60 g	EKS127 d /N	M 12	45	60 g

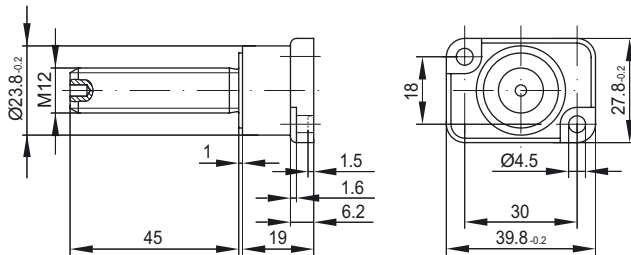
● Dimensions EKS127 a, EKS127 b, EKS127 c



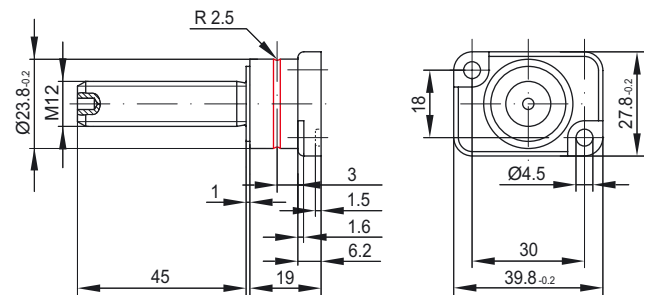
● Dimensions EKS127 a /N, EKS127 b /N, EKS127 c /N



● Dimensions EKS127 d



● Dimensions EKS127 d /N



Accessories

Ordering code	Dimensions	Description
HR-abc	Ø 16 mm x Ø 2 mm	Split ring for rail mounting of EKS127 a /N, EKS127 b /N, and EKS127 c /N
HR-d	Ø 22 mm x Ø 2 mm	Split ring for rail mounting of EKS127 d /N
DB-abc	Ø 22 mm x Ø 12 mm	Spacer sleeve for rail mounting of EKS127 a /N, EKS127 b /N, and EKS127 c /N
DB-d	Ø 28 mm x Ø 12 mm	Spacer sleeve for rail mounting of EKS127 d /N

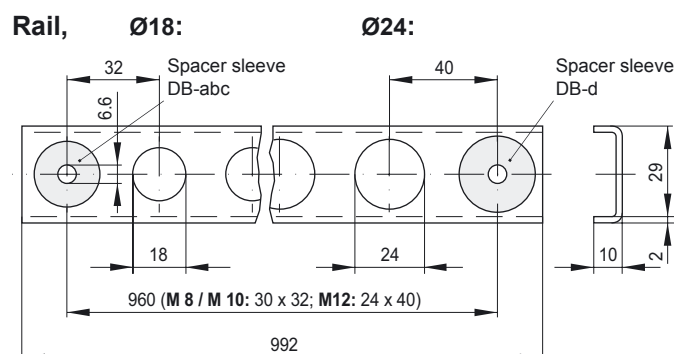
Mounting

- Bolts:**
 Please note that there is a maximum tightening torque for each type of bolt, see 'Technical data'.
- Single terminal bolt:**
 The terminal bolts are fastened with 2 M4 screws.
 The maximum tightening torque is 1.5 Nm.
- Rail mounting:**
 The bolt is put through the hole in the rail and the base is fixed to the rail with a split ring.
 Note: Rails as shown in the corresponding diagram are not produced or offered by Schaltbau GmbH.

Dimensions in mm

Mounting of rail

Note: Mounting of rail is achieved by means of spacer sleeves.



Electrical Components and Systems for Transportation and Industrial Applications

Connectors	<ul style="list-style-type: none"> ■ Connectors manufactured to industry standards ■ Connectors to suit the special requirements of communications engineering (MIL connectors) ■ Charging connectors for battery-powered machines and systems ■ Connectors for railway engineering, including UIC connectors ■ Special connectors to suit customer requirements
Snap-action switches	<ul style="list-style-type: none"> ■ Snap-action switches with positive opening operation ■ Snap-action switches with self-cleaning contacts ■ Enabling switches ■ Special switches to suit customer requirements
Contactors	<ul style="list-style-type: none"> ■ Single and multi-pole DC contactors ■ High-voltage AC/DC contactors ■ Contactors for battery powered vehicles and power supplies ■ Contactors for railway applications ■ Terminal bolts and fuse holders ■ DC emergency stop switches ■ Special contactors to suit customer requirements
Control devices	<ul style="list-style-type: none"> ■ Master controllers and reversers for railway applications ■ Toggle switch devices ■ Handles and foot switches for railway applications (dead-man equipment) ■ Switching elements with high breaking capacity ■ Emergency brake handles ■ Signal devices
Transportation	<ul style="list-style-type: none"> ■ Power supplies for passenger coaches (electric equipment) ■ Battery chargers for locomotives and passenger coaches ■ High-voltage equipment for single and multi-phase operation ■ Heating devices and heating controls ■ Design and engineering services for high-voltage equipment ■ Special equipment to suit customer requirements

Schaltbau GmbH

Klausenburger Strasse 6
81677 Munich
Germany

Phone +49 89 9 30 05-0
Fax +49 89 9 30 05-350
e-Mail contact@schaltbau.de
Internet www.schaltbau.de

with compliments: