

## PRODUCT OVERVIEW



# SSMCX Microminiature Connector

The Molex SSMCX series of connectors is a patent pending super small MCX developed for compact Radio and Antenna applications requiring high-density in a very small area and where performance is critical. SSMCX connectors are 35% smaller and offer higher performance over Molex MMCX connectors. The snap-on coupling feature eliminates the rocking, sometimes found in MMCX connectors, which can contribute to return-loss degradation in dynamic conditions. The cable connectors are available as custom cable assemblies or supplied un-assembled for customer self assembly. The vertical connectors will operate to 10 GHz.

## PCB Cable Mount

### Features and Benefits

- Microminiature
- Snap-on coupling
- DC to 10 GHz
- Very small form factor

### Materials

- Contacts – Beryllium copper
- Insulator – Teflon<sup>®</sup>\*
- Body – Brass gold plated



## SPECIFICATIONS

### Electrical

Nominal Impedance (Ohms)	Frequency Range (GHz)	Voltage, Working (Vrms)	Insulation Resistance (MOhms)	Center Contact Resistance (MOhms)	Outer Contact Resistance (MOhms)	RF Leakage (-dB)	RF Insertion Loss (dB)	VSWR at Max. Freq
50	0-6	170	1000	10	10	55	.05√F	<1.30:1

### Mechanical

Coupling Method	Force to Engage (max)	Force to Disengage	Durability (Cycles)
Snap-on	3 lbs (13.34N)	1.80 lbs (4.45-13.34N)	500

### Environmental

Temperature (Degrees C)	Vibration: MIL-STD-202, Method 204	Thermal Shock: MIL-STD-202, Method 107	Corrosion (Salt Spray): MIL-STD-202, Method 101	Mechanical Shock: MIL-STD-202, Method 213	Moisture Resistance: MIL-STD-202, Method 106
-55 to +155	Test Condition C	Test Condition F	Test Condition C	–	Five minutes after removal 200 MOhms

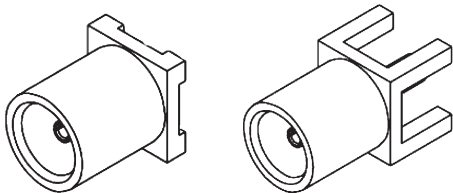
\*Teflon is a registered trademark of E.I. du Pont de Nemours and Company



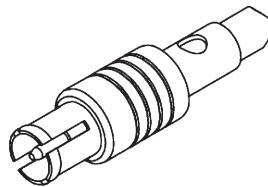
# SSMCX Microminiature Connector

## Technical Product Information

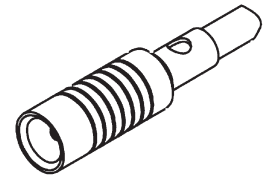
- PCB Plugs – Vertical SMT, through-hole mount or edge mount
- Cable Plugs/Jacks – straight and right-angle versions for the following cable types:
  - Flexible cables - 1.32mm, 1.37mm, RG178 and RG179
  - S/R cables - .047 and .086mm
- Between-series adapters



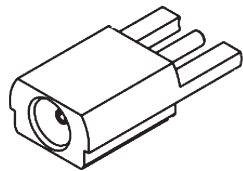
**PCB SMT & Through-Board  
Jack Receptacles**



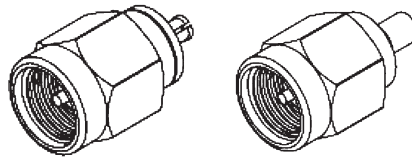
**Cable Plugs**



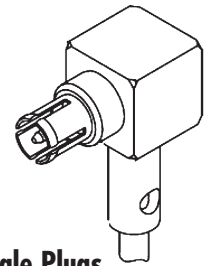
**Cable Jacks**



**Edge Mount**



**Between-Series Adapters**



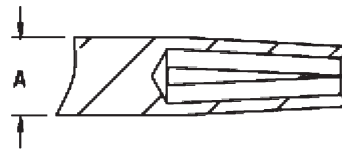
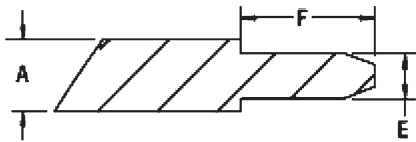
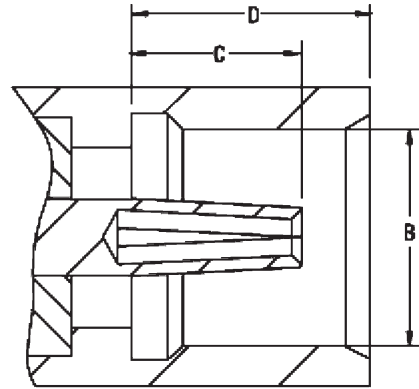
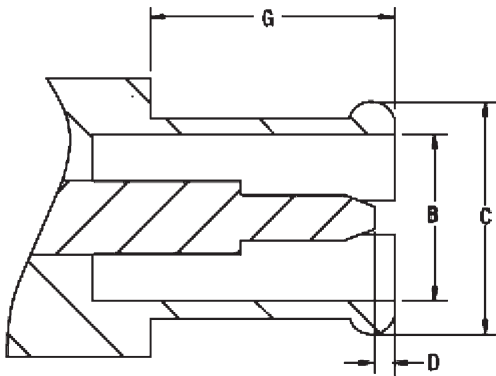
**Right-Angle Plugs**

## ORDERING INFORMATION

Part Number	Description	Body	Plating	Cable Type
73415-4680	Straight Solder Plug	Brass	Gold	1.37mm
73415-6050	Straight Solder Plug	Brass	Gold	.047 S/R
73415-6450	Straight Solder Plug	Brass	Gold	.086 S/R
73413-0060	Right-Angle Solder Plug	Brass	Gold	1.32mm
73415-4760	Straight Solder Jack	Brass	Gold	1.37mm
73415-6430	Straight Solder Jack	Brass	Gold	.086 S/R
73413-0040	Vertical PCB SMT Jack	Brass	Gold	N/A
73413-0050	Vertical PCB Through-Board Jack	Brass	Gold	N/A
73415-4670	Edge-Mount Jack	Brass	Gold	N/A
73386-0830	SMA Plug - SSMCX Plug Adapter	Brass	Gold	N/A
73386-0840	SMA Plug - SSMCX Jack Adapter	Brass	Gold	N/A
89761-1740	SSMCX Straight Plug - SSMCX Straight Jack	Brass	Gold	1.32mm
89761-1750	SSMCX Straight Plug - SSMCX R/A Plug	Brass	Gold	1.32mm
89761-1760	SSMCX Straight Plug - SSMCX Straight Plug	Brass	Gold	1.32mm



# SSMCX Microminiature Connector



**Plug**

**Jack**

## INTERFACE MATING DIMENSIONS

	Plug Dimensions	
	min. in/(mm)	max. in/(mm)
A	.025/0.65 REF	
B	.055/1.40	.059/1.50
C	.078/2.00 REF	
D	.000/0.00	.009/0.25
E	.014/0.38	.016/0.42
F	.053/1.35	—
G	.070/1.80	—

	Jack Dimensions	
	min. in/(mm)	max. in/(mm)
A	.025/0.65 REF	
B		.076/1.95
C	.043/1.10	.053/1.35
D		.070/1.80
E		
F		
G		



[www.molex.com](http://www.molex.com)

**America**  
2222 Wellington Ct.  
Lisle, Illinois 60532 USA  
+1-800-78MOLEX  
[amerinfo@molex.com](mailto:amerinfo@molex.com)

**Asia Pacific North**  
Yamato, Kanagawa, Japan  
+81-462-65-2324  
[apninfo@molex.com](mailto:apninfo@molex.com)

**Asia Pacific South**  
Jurong, Singapore  
+65-6-268-6868  
[apsinfo@molex.com](mailto:apsinfo@molex.com)

**Europe**  
Walldorf, Germany  
+49-6227-3091-0  
[mxgermany@molex.com](mailto:mxgermany@molex.com)

**Corporate Headquarters**  
2222 Wellington Ct.  
Lisle, Illinois 60532 USA  
+630-969-4550  
[www.molex.com](http://www.molex.com)