

## FEATURES AND SPECIFICATIONS



# Mini-Fit H20™ Sealed Interconnect System 4.20mm (.165") Pitch

*The sealed Mini-Fit H20™ IP67-rated system with pre-installed, integrated interface and wire seals meet the need for weatherproof, compact connections in wire-to-wire applications up to 9.0A per circuit and contribute to lower applied costs compared to connectors with manually installed seals*

The Mini-Fit H20™ mid-range power connector is designed for use in weatherproof applications that require a sealed system. The Mini-Fit H20 connector system is IP67-rated, which ensures connector integrity when submersed in up to one meter of water. The Mini-Fit H20 connector has a small overall profile and can handle up to 9.0A per circuit.

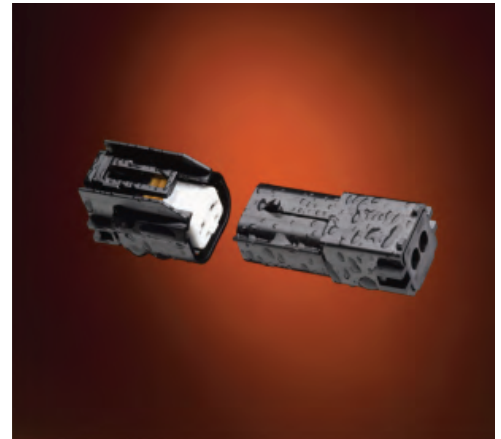
The Mini-Fit H20 product family consists of plug and receptacle assemblies and male and female crimp terminals. The plug and receptacle assemblies are provided with the interface and wire seals pre-installed, providing time savings to the customer. The terminals have a new "wingless" design that will not damage seals upon installation or removal. Terminals will accept both 18 and 20 AWG, UL 1015 wires.

The Mini-Fit H20 housings are molded from a UV-stabilized, UL 94V-0 material. The Mini-Fit H20 connector is the latest addition to the Mini-Fit product family. For more information on Molex's extensive Mini-Fit product offering, visit: [www.molex.com/link/MiniFitH20.html](http://www.molex.com/link/MiniFitH20.html)

- 46055** Female Terminal
- 46056** Male Terminal
- 46064** Receptacle Assembly
- 46065** Plug Assembly

### Features and Benefits

- IP67-rated connector ensures a water and dust-tight interconnection for use in outdoor applications
- Receptacle and plug housings are shipped with interface and wire seals pre-installed to lower applied cost by reducing installer assembly time
- Positive-locking system ensures the connectors are securely mated and prevents accidental un-mating
- UV-stabilized, molded materials can be used in applications exposed to direct sunlight
- Can be used with 18 and 20 AWG wires and accommodate multiple applications
- Small overall profile for use in tight spaces



## SPECIFICATIONS

### Reference Information

Packaging:  
Terminals: Reel and Bag  
Assemblies: Bag  
UL File No.: E29179  
CSA File No.: 1068385

### Electrical

Voltage (max.): 600V  
Current (max.): 9.0A per circuit

### Physical

Housing: Polyester, UL 94V-0  
Contact: Copper (Cu) Alloy  
Plating:  
Contact Area: Tin or 30µ" Select Gold (Au)  
Operating Temperature: -40 to +105°C

### Mechanical

Contact Insertion Force: 15N (3.372 lb)  
Contact Retention to Housing: 20N (4.496 lb)  
Mating Force:  
Tin (Sn): 11.1N (2.495 lb) max.  
Gold (Au): 4.4N (.989 lb) max.  
Unmating Force:  
Tin (Sn): 2.2N (.495 lb) min.  
Gold (Au): 1.0N (.225 lb) min.  
Durability:  
Tin (Sn): 75 cycles min.  
Gold (Au): 100 cycles min.

## MARKETS AND APPLICATIONS



## Mini-Fit H20™ Sealed Interconnect System 4.20mm (.165") Pitch

- Vending
  - Drink dispensers
  - Food service equipment
- Automotive / Motorcycles
- Medical
- Industrial Equipment
  - Outdoor lighting
  - Conveyer-belt controls
- Outdoor Entertainment
  - Hot tubs
  - Swimming pools
- Recreation Vehicles
  - ATV
  - Golf carts
  - Boats
  - Jet skis and snowmobiles
- Material Handling Equipment
  - Forklifts
  - Agricultural equipment
- Solar and Renewable Energy

- 46055** Female Terminal
- 46056** Male Terminal
- 46064** Receptacle Assembly
- 46065** Plug Assembly



## ORDERING INFORMATION

### Receptacle and Plug Assembly

Order No.	Component	Circuits
46064-0032	Receptacle	2
46065-0032	Plug	

### Crimp Terminals

Order No.	Gender	Plating	Packaging
46055-0005	Female	Tin	Reel
46055-0006	Female	30µ" Select Gold	
46056-0002	Male	Tin	
46056-0003	Male	30µ" Select Gold	Bag
46055-0007	Female	Tin	
46055-0008	Female	30µ" Select Gold	
46056-0004	Male	Tin	
46056-0005	Male	30µ" Select Gold	

[www.molex.com/link/MiniFitH20.html](http://www.molex.com/link/MiniFitH20.html)