

## FEATURES AND BENEFITS

### Mini-Fit RTC™ (Reflow Temperature Compatible) vertical and right-angle headers achieve reflow-solder temperatures up to 265°C for lead-free processes and mate with standard Mini-Fit® receptacles

Designed with a high-temperature LCP housing, Mini-Fit Reflow Temperature Compatible (RTC) headers can withstand solder-reflow temperatures up to 265°C, to guarantee compatibility with lead-free reflow processes. Mini-Fit RTC™ headers provide a solution for applications with high-temperature reflow soldering requirements.

Mini-Fit RTC headers mate with standard Mini-Fit® receptacles and incorporate the standard Mini-Fit polarization design. Mini-Fit RTC headers share the same design features of the Mini-Fit Jr. headers, ensuring compatibility and reliability.

Mini-Fit products provide a cost-effective solution for mid-range power applications that require high-density and higher current-carrying capability.

For more information on Molex's extensive Mini-Fit product offering, visit [www.molex.com/product/minifit.html](http://www.molex.com/product/minifit.html)

### Features and Benefits

- High-temperature LCP housing withstands RoHS lead-free processing up to +265°C peak
- Optional press-fit PCB pegs provide polarization during placement on the PCB and increased retention during the soldering process (vertical headers only); pegs can be subjected to +265°C wave-solder process without deformation
- High-current Mini-fit Plus HCS™ male pins provide up to 13.0A per circuit (mated with Mini-Fit Plus HCS™ female crimp terminal, 16AWG)
- Mini-Fit locking thumb latch assures positive locking of mating connectors
- Standard Mini-Fit polarized, keyed silos prevent mismatching and provides protection for the mating terminals; compatible with existing Mini-Fit receptacles
- Circuit sizes 4 to 12, and 24 in vertical and right-angle options provide design flexibility
- Matte tin plating can be used in higher temperature soldering environments versus bright tin plating

### Reference Information

Packaging: Tray  
 Mates With: 5557 Receptacle  
 Designed In: Millimeters  
 Process: Wave Solder or Reflow, 265°C peak

### Electrical

Voltage: 600V  
 Current: 13.0A  
 Contact Resistance: 20 milliohms  
 Dielectric Withstanding Voltage: 2200V AC  
 Insulation Resistance: 1000 Megohms min.

### Mechanical

Mating Cycles: 30 cycles

### Physical

Housing: LCP, black  
 Flammability: UL 94V-0  
 Contact: Brass  
 Plating: Matte Tin over Nickel  
 Tail Lengths:  
 3.66mm (.144")  
 4.46mm (.176")  
 5.26mm (.207")

Operating Temperature: -40 to +105°C  
 Lead-free Process Capable: Yes

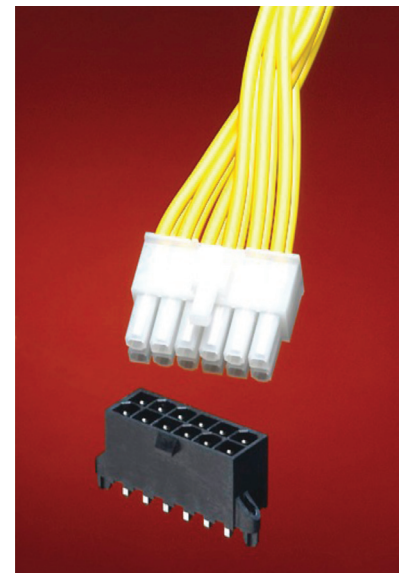
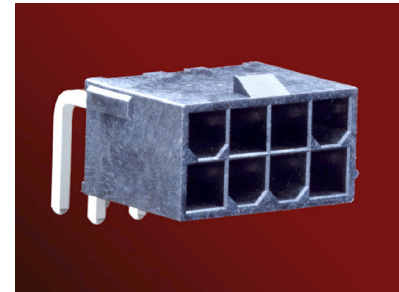
## Mini-Fit RTC™ Reflow Temperature Compatible Headers 4.20mm (.165") Pitch

46207 Vertical Headers  
 46991 Right-Angle Headers

### Mini-Fit RTC™ Vertical Header



### Mini-Fit RTC™ Right-Angle Header

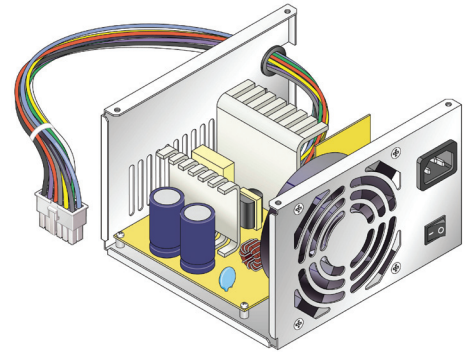


## APPLICATIONS

- Desktop/tower computer
- Power supplies
- Telecommunications
  - Hubs
  - Servers
- Industrial
- Medical
- Transportation
- Marine and recreational
- Military Commercial Off-the-Shelf (COTS)
- Mid-range power applications



**Computer Tower**



**PC Power Supply**

## ORDERING INFORMATION

| *Order No. |                              |              |                              |
|------------|------------------------------|--------------|------------------------------|
| Circuits   | Vertical Orientation         |              | Right-Angle Orientation      |
|            | Tail Length = 3.66mm (.144") |              | Tail Length = 3.30mm (.130") |
|            | With Pegs                    | Without Pegs | Without Pegs                 |
| 4          | 46207-0004                   | 46207-1004   | 46991-1004                   |
| 6          | 46207-0006                   | 46207-1006   | 46991-1006                   |
| 8          | 46207-0008                   | 46207-1008   | 46991-1008                   |
| 10         | 46207-0010                   | 46207-1010   | 46991-1010                   |
| 12         | 46207-0012                   | 46207-1012   | 46991-1012                   |
| 24         | 46207-0024                   | 46207-1024   | 46991-1024                   |

\*For tape and reel packaging please contact Molex inside sales