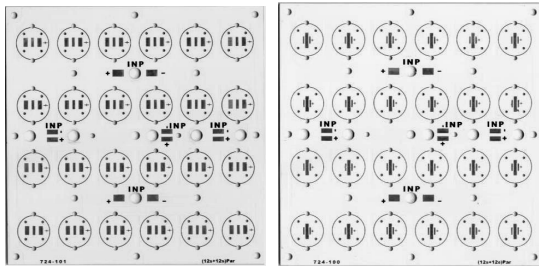




CODE :24 B ST XP 1212

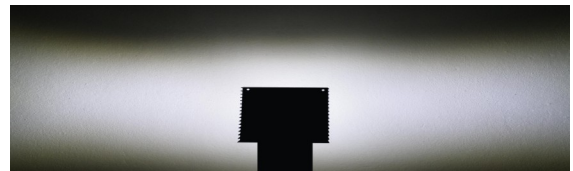
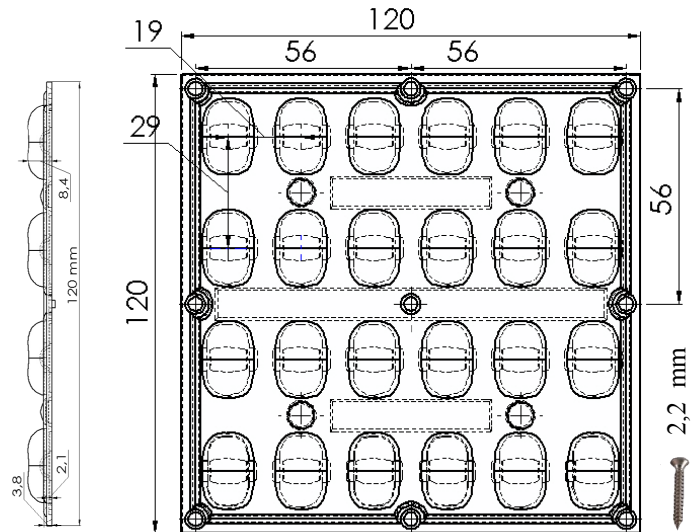
ANGLE	130° X 65°
Box Quantiti	80 PCS
Box Size	25 X 25 X 16 CM
Lens Net Kg +/- %3	4,60 Kg
Box Total Kg +/- %3	4,90 Kg

Led Type

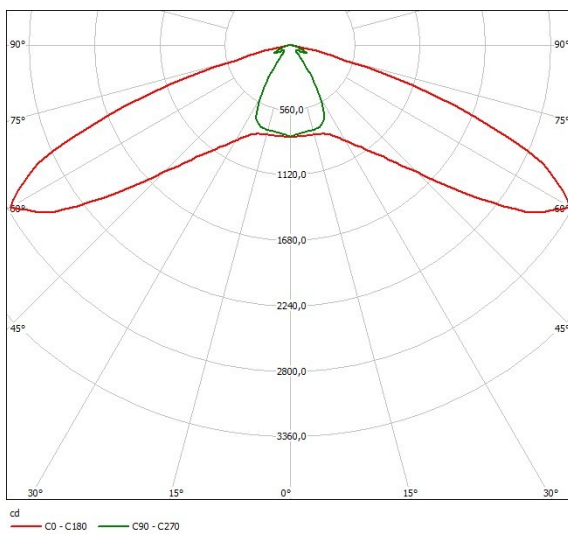


P C B Code : 724-101 (MX6)
Aluminum Mask : White
Aluminum Size : 120 X 120 mm
Aluminum Thickness: 1,6 mm
Aluminum Weight: 60 g
Electricity Line : Copper
Light Scattering Type:12S + 12S Paralel

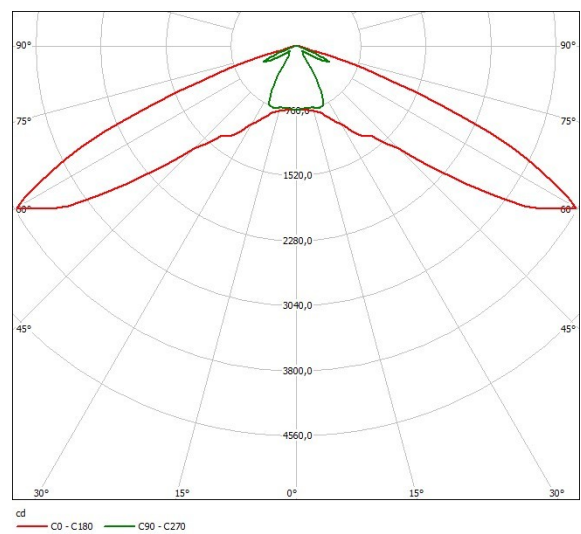
P C B Code : 724-100 (XP)
Aluminum Mask : White
Aluminum Size : 120 X 120 mm
Aluminum Thickness: 1,6 mm
Aluminum Weight: 60 g
Electricity Line : Copper
Light Scattering Type :12S + 12S Paralel



LIGHTING PARAMETERS MX6 LED



LIGHTING PARAMETERS XP TIP LED



LENS USE : Street ,Office,Home,Stage ,Architctural,DownLight , &Decorative Lighting

Lens Material : Optical Grade Best Available Optical Efficiency with high UV & Temperature Resistance -40°C ~ + 100°C Light Transmittance High Productivity weth 2mmTh.

WARNING : If you Decide to use Glue only, Please Take Special Care of Correct Positioning