

Molex offers the industry's only metal-housing LC2+ connectors, the ideal high-performance, discrete-fiber solution for use in severe operating environments in industrial, telecom, military and medical applications

LC2+ connectors are the next-generation solution to the highly popular LC connector interface. The LC2+ interface is found on many active devices (LED and laser-based) in common equipment applications related to telecom (i.e. antennas), premise wiring, industrial, military, aerospace and medical industries.

LC2+ connectors are designed to support the enhanced performance (EP) aerospace-grade optical cabling, available from cable-manufacturing vendors. In addition, LC2+ connectors meet all FOCIS 10 specifications. For more information on LC2+ connectors, visit: www.molex.com/product/lc2+.html.

LC2+ Metal Optical Connectors

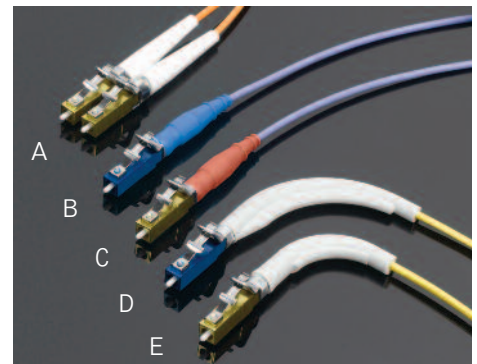
106397 Standard and High-Temperature Connectors

106372 Sealed Connectors

FEATURES AND BENEFITS

- Metal body and latch version of the popular LC connector system is fully compatible with all LC form-factor connectors, adapters, active devices and tooling
- Connectors available in standard, high-temperature and sealed versions provide customers with design flexibility
- High-temperature metal body withstands long-run operating temperatures up to +150°C, beyond the range of standard plastic-body LC interconnects and can withstand extended severe shock and vibration exposure without risk of failure
- Enhanced metal latch over plastic LC connector improves latch retention to withstand severe shock and vibration situations
- Multiple strain-relief boot styles available address cable-routing issues and support many cable sizes and applications, including 900µm buffered fiber, 1.20mm (.047"), 1.60mm (.063"), 1.80mm (.070") and 2.00mm (.079") jacketed cable and 45 and 90° strain-relief routing configurations
- Simplex, duplex, single-mode and multi-mode versions provide a variety of connection options to suit many applications
- Sealing O-ring and strain-relief boots available (*on sealed versions*) protect expensive devices from moisture propagation* through the connector

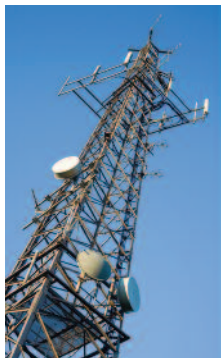
*Boots are not IP rated and are considered "splash proof". They do not compensate for any leak points through features of other components such as adapters and active devices themselves.



LC2+ Connectors:
 A: Standard, Duplex
 B: Sealed, Simplex
 C: High temperature, Simplex
 D: Standard, Simplex, Single Mode with 90° Boot
 E: Standard, Simplex, Multimode with Tight-Bend Radius 90° Boot

MARKETS AND APPLICATIONS

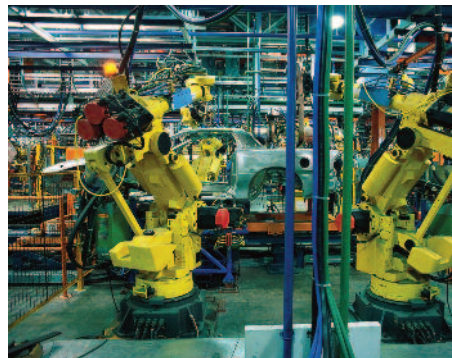
- Telecommunication and data communication equipment
 - Wireless antennas
 - Vault I/O's
 - Video transmission
- Industrial
 - Motor, process and quality-control sensors
 - Physical, chemical and biological-presence sensors
 - Wet processing metering
- Security cameras
- Mining communications
- Oil and gas exploration sensors
- Medical applications
 - Operating rooms
 - Diagnostic equipment
- Military / aerospace applications
 - Field-command centers
 - Field-tactical cables
 - Servers
 - Switches
- Avionics
- Vetronics (*advanced vehicular electronics for communication, sensing and management systems*)
- High-security/reliability communications
- Equipment manufacturers
- Integrators and installers
- Defense contractors



Antennas



Oil and Gas Exploration



Factory Automation



Commercial / Military Aircraft

SPECIFICATIONS

Reference Information

Packaging: Bag
 Mates With: LC adapters
 (series 106124, 106125) and EMI
 adapters (series 106114, 106115,
 106116, 106123) for connections to
 LC2+ or standard LC connectors
 Use With: 900µm buffered fiber; 1.20mm
 (.047"), 1.60mm (.063"), 1.80mm
 (.070") and 2.00mm (.079") jacketed
 cable; 45 and 90° strain-relief routing
 configurations
 Designed In: Millimeters
 RoHS Compliant: Yes
 Halogen Free: Yes

Mechanical

Durability: Minimum 200 mate/demate
 cycles

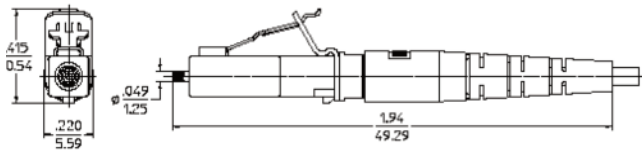
Physical

Housing: Metal
 Latch: Metal
 Ferrule: Zirconia Ceramic
 Operating Temperature: -50 to +150°C

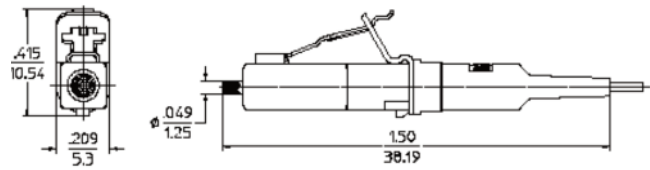
LC2+ Metal Optical Connectors

106397 Standard and High-
 Temperature Connectors

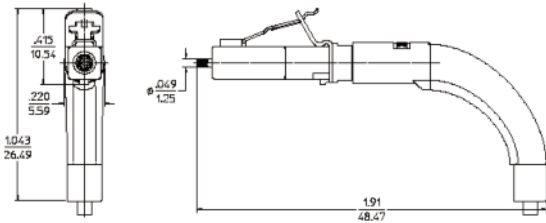
106372 Sealed Connectors



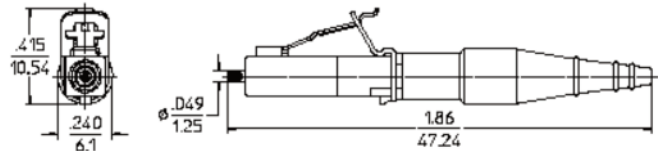
Standard Boot Version



Standard 900µm Buffered Fiber Boot Version



Standard 90° Boot Version



Sealed and High-Temperature Boot Version

ORDERING INFORMATION

Order No.	Version	Connector Type	Mode	Boot
106397-1502	Standard	Simplex	Multi Mode	Straight
106397-1552				45°
106397-1562				90°
106397-3010		Duplex	Single Mode	Straight
106397-1304		Simplex		
106397-1604		Duplex		
106397-5500	High Temperature	Simplex	Multi Mode	
106372-1500	Sealed			

*Additional connector variations are available and cable assemblies can be built to meet customer requirements. Contact Molex Customer Service for inquiries.